



Connells

Rakegate Close
Oxley Wolverhampton



Property Description

Connells Wolverhampton are delighted to bring to the market this fabulous and immaculately presented three bedroom end-terraced property in a popular cul-de-sac location.

The property comprises of an entrance hall, lounge, modern fitted kitchen, spacious lounge diner with french doors to rear, downstairs wc, three generous bedrooms, family bathroom. Externally there is a large driveway to front offering ample off road parking as well as side shared access leading to a low maintenance rear garden.

Location And Area

Set to north of Wolverhampton City centre in a cul-de-sac location with easy access to the A449 and adjoining M54 motorway and ideally placed for the i54 Commercial development. The nearest rail station is Bilbrook which is just over two miles away. There are numerous local schools, bus routes and amenities nearby.

Entrance Hall

Double glazed door to front, radiator, doors to various rooms.

Kitchen

10' 3" x 7' 2" (3.12m x 2.18m)

Double glazed door window to front, range of wall and base units, inset oven, hob and extractor, radiator, plumbing for a washer, space for a fridge freezer, door to entrance hall.

Lounge

14' 3" x 14' 7" max (4.34m x 4.45m max)

Double glazed french doors to rear, storage cupboard, door to entrance hall, low flush toilet, radiator, door to entrance hall.

Downstairs Wc

Double glazed window to front, pedestal sink, low flush toilet, radiator, door to entrance hall.



First Floor Landing

Loft access, large storage cupboard, doors to various rooms.

Bedroom One

7' 9" x 11' (2.36m x 3.35m)

Double glazed window to rear, radiator, fitted wardrobe, blinds, storage cupboard, door to landing.

Bedroom Two

9' 7" x 8' (2.92m x 2.44m)

Double glazed window to front, radiator, fitted sliding door wardrobe, door to landing.

Bedroom Three

7' 3" x 6' 6" (2.21m x 1.98m)

Double glazed window to rear, radiator, door to landing.

Family Bathroom

Double glazed window to side, panelled bath with a mixer shower over, pedestal sink, low flush toilet, radiator, door to landing.

Outside Front

Large driveway area offering ample off road car parking, outdoor tap, side shared access with a security light.

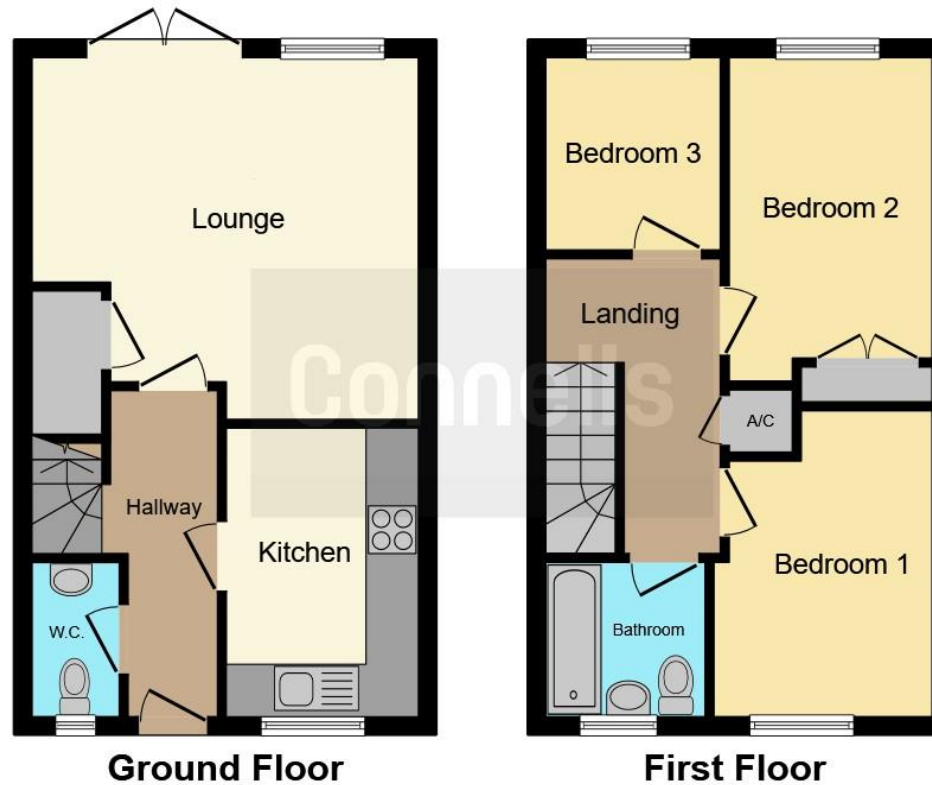
Outside Rear

Low maintenance, mostly paved patio areas with gravel bed areas, the rear garden is surrounded by a range of panelled fencing as well as outdoor electric sockets and outdoor security light to rear.









This floor plan is for illustrative purposes only. It is not drawn to scale. Any measurements, floor areas (including any total floor area), openings and orientation are approximate. No details are guaranteed, they cannot be relied upon for any purpose and they do not form part of any agreement. No liability is taken for any error, omission or misstatement. A party must rely upon its own inspection(s). Powered by www.focalagent.com

To view this property please contact Connells on

T 01902 710 170
E wolverhampton@connells.co.uk

81-83 Darlington Street
 WOLVERHAMPTON WV1 4EX

EPC Rating: Awaited

view this property online connells.co.uk/Property/WVH330328

Tenure: Freehold



1. MONEY LAUNDERING REGULATIONS Intending purchasers will be asked to produce identification documentation at a later stage and we would ask for your co-operation in order that there will be no delay in agreeing the sale. 2. These particulars do not constitute part or all of an offer or contract. 3. The measurements indicated are supplied for guidance only and as such must be considered incorrect. Potential buyers are advised to recheck measurements before committing to any expense. 4. We have not tested any apparatus, equipment, fixtures, fittings or services and it is in the buyers interest to check the working condition of any appliances.

Connells Residential is registered in England and Wales under company number 1489613, Registered Office is Cumbria House, 16-20 Hockliffe Street, Leighton Buzzard, Bedfordshire, LU7 1GN. VAT Registration Number is 500 2481 05.

See all our properties at www.connells.co.uk | www.rightmove.co.uk | www.zoopla.co.uk

Property Ref: WVH330328 - 0002