



Connells

Oatlands Drive  
Slough



Oatlands Drive  
Slough SL1 3HU

for sale offers in the region of  
**£210,000**



### Property Description

A purpose built one bedroom ground floor apartment, situated in this sought after location on Oatlands Drive. The property is well located to all local amenities, including the popular schools of Herschel Grammar & Baylis Girls School, Slough Town Centre with its mainline railway station is within one mile. It benefits from 16ft lounge, separate kitchen, electric heating, private rear garden & allocated parking space.

### Ground Floor;-

Door to

### Communal Entrance Hall

Door to

### Living Room

16' 6" x 13' 1" max (5.03m x 3.99m max). front aspect window, electric heater, TV point, doors to

### Kitchen

9' 4" x 6' 4" (2.84m x 1.93m)  
Rear aspect window, single drainer sink unit with mixer tap & cupboard under, wall & base units, four ring electric hob with electric oven under, cooker hood, plumbing for washing machine, space for fridge freezer.

### Inner Hall

Doors to

### Bedroom

12' x 10' 2" (3.66m x 3.10m)  
Rear aspect window, double wardrobe, doors to rear garden

### Wet Room

Open plan shower area, wash hand basin, low level WC, extractor fan

### Outside;-

### To The Front

Open plan laid to lawn.







This floor plan is for illustrative purposes only. It is not drawn to scale. Any measurements, floor areas (including any total floor area), openings and orientation are approximate. No details are guaranteed, they cannot be relied upon for any purpose and they do not form part of any agreement. No liability is taken for any error, omission or misstatement. A party must rely upon its own inspection(s). Powered by [www.focalagent.com](http://www.focalagent.com)

To view this property please contact Connells on

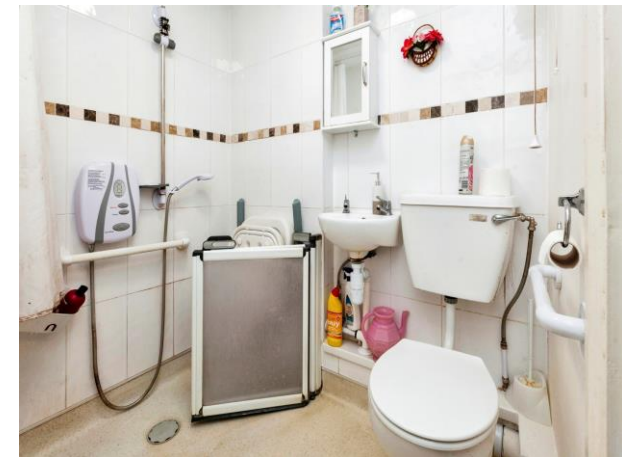
**T 01753 810 870**  
**E [slough@connells.co.uk](mailto:slough@connells.co.uk)**

111 High Street  
 SLOUGH SL1 1DH

**EPC Rating: C**

**view this property online [connells.co.uk/Property/SGH310385](http://connells.co.uk/Property/SGH310385)**

This is a Leasehold property with details as follows; Term of Lease 125 years from 25 Mar 1990. Should you require further information please contact the branch. Please Note additional fees could be incurred for items such as Leasehold packs.



Tenure: Leasehold



1. MONEY LAUNDERING REGULATIONS Intending purchasers will be asked to produce identification documentation at a later stage and we would ask for your co-operation in order that there will be no delay in agreeing the sale. 2. These particulars do not constitute part or all of an offer or contract. 3. The measurements indicated are supplied for guidance only and as such must be considered incorrect. Potential buyers are advised to recheck measurements before committing to any expense. 4. We have not tested any apparatus, equipment, fixtures, fittings or services and it is in the buyers interest to check the working condition of any appliances.

Connells Residential is registered in England and Wales under company number 1489613, Registered Office is Cumbria House, 16-20 Hockliffe Street, Leighton Buzzard, Bedfordshire, LU7 1GN. VAT Registration Number is 500 2481 05.

**See all our properties at [www.connells.co.uk](http://www.connells.co.uk) | [www.rightmove.co.uk](http://www.rightmove.co.uk) | [www.zoopla.co.uk](http://www.zoopla.co.uk)**

Property Ref: SGH310385 - 0004