



Connells

Farm Crescent
Slough



Property Description

This three-bedroom mid terrace family home is located in the popular residential area of Wexham. It benefits from 15ft lounge, 16ft separate kitchen, rear garden, and permission to built driveway.

Ground Floor

Entrance Hall

Stairs to first floor, radiator, laminate flooring.

Lounge

15' x 11' 4" (4.57m x 3.45m). Front aspect window, laminate flooring & radiator.

Kitchen

16' 7" x 8' 10" (4.88m x 2.44m). Two rear aspect windows, 5 ring integrated gas hob, cooker hood, integrated oven, single drainer sink unit with cupboard underneath, plumbing for dishwasher & washing machine, space for fridge freezer, radiator, under stairs cupboard, door to inner hall.

First Floor Landing

Loft access

Bedroom One

12' 11" x 11' 3" (3.94m x 3.43m). Front aspect window, radiator

Bedroom Two

12' 1" x 8' 11" (3.68m x 2.72m). Rear aspect window, store cupboard, radiator.

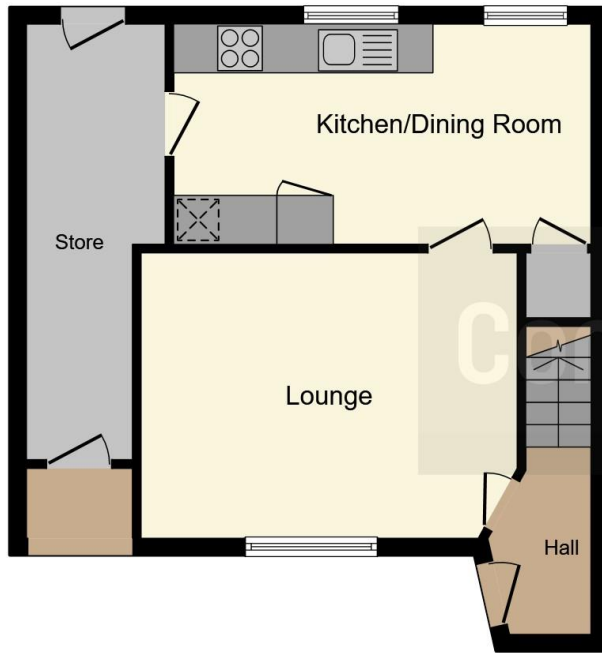
Bedroom Three

10' 3" x 9' 2" (3.12m x 2.79m). Front aspect window, built in cupboard, radiator.

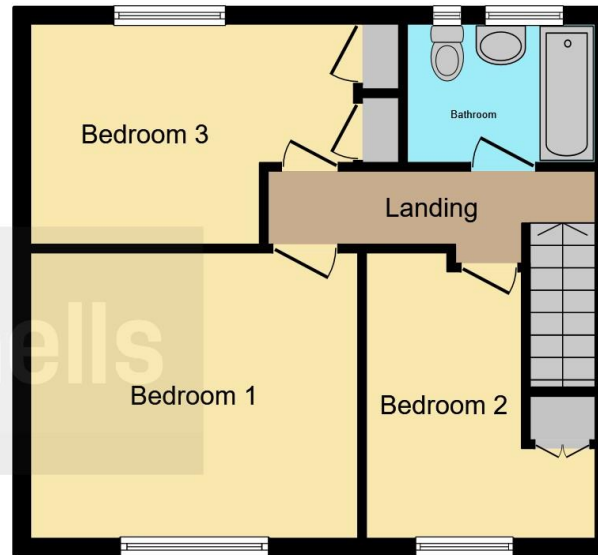
Bathroom

Rear aspect window, WCM bath with mixer taps, shower attachment, wash hand basin.





Ground Floor



First Floor

This floor plan is for illustrative purposes only. It is not drawn to scale. Any measurements, floor areas (including any total floor area), openings and orientation are approximate. No details are guaranteed, they cannot be relied upon for any purpose and they do not form part of any agreement. No liability is taken for any error, omission or misstatement. A party must rely upon its own inspection(s). Powered by www.focalagent.com

To view this property please contact Connells on

T 01753 810 870
E slough@connells.co.uk

111 High Street
 SLOUGH SL1 1DH

EPC Rating: Awaited

[check out more properties at connells.co.uk](http://www.connells.co.uk)



Tenure: Freehold



1. MONEY LAUNDERING REGULATIONS Intending purchasers will be asked to produce identification documentation at a later stage and we would ask for your co-operation in order that there will be no delay in agreeing the sale. 2. These particulars do not constitute part or all of an offer or contract. 3. The measurements indicated are supplied for guidance only and as such must be considered incorrect. Potential buyers are advised to recheck measurements before committing to any expense. 4. We have not tested any apparatus, equipment, fixtures, fittings or services and it is in the buyers interest to check the working condition of any appliances.

Connells Residential is registered in England and Wales under company number 1489613, Registered Office is Cumbria House, 16-20 Hockliffe Street, Leighton Buzzard, Bedfordshire, LU7 1GN. VAT Registration Number is 500 2481 05.

See all our properties at www.connells.co.uk | www.rightmove.co.uk | www.zoopla.co.uk

Property Ref: SGH309772 - 0002