



Connells

Dairy Close
Tipton

Dairy Close
Tipton DY4 8UN

for sale offers in the region of
£165,000



Property Description

Modern Middle Terrace Home Making an Ideal First Time Purchase. Offering the benefit of Great Location, Double Glazing and No Upward chain

Viewing Highly Recommended with well Presented Accommodation.

Reception Hall

Lounge

15' 7" (max) x 11' 8" (max) (4.75m (max) x 3.56m (max))

French double glazed doors to the rear, storage heater.

Fitted Kitchen

7' 5" x 7' 4" (2.26m x 2.24m)

Having wall and base units, sink/drainage integrated into work surface, electric oven & hob with cookerhood over with front facing double glazed window.



First Floor

Landing

Having loft access and doors leading to various rooms.

Bedroom One

12' 2" (max) x 11' 8" (into recess) (3.71m (max) x 3.56m (into recess))

Having front facing double glazed window and panel heater.

Bedroom Two

11' (max) x 6' 6" (max) (3.35m (max) x 1.98m (max))

Having rear facing double glazed window and panel heater

Family Bathroom

Having bath with shower over, wash hand basin, low level WC, front facing double glazed window.

Outside

Rear Garden

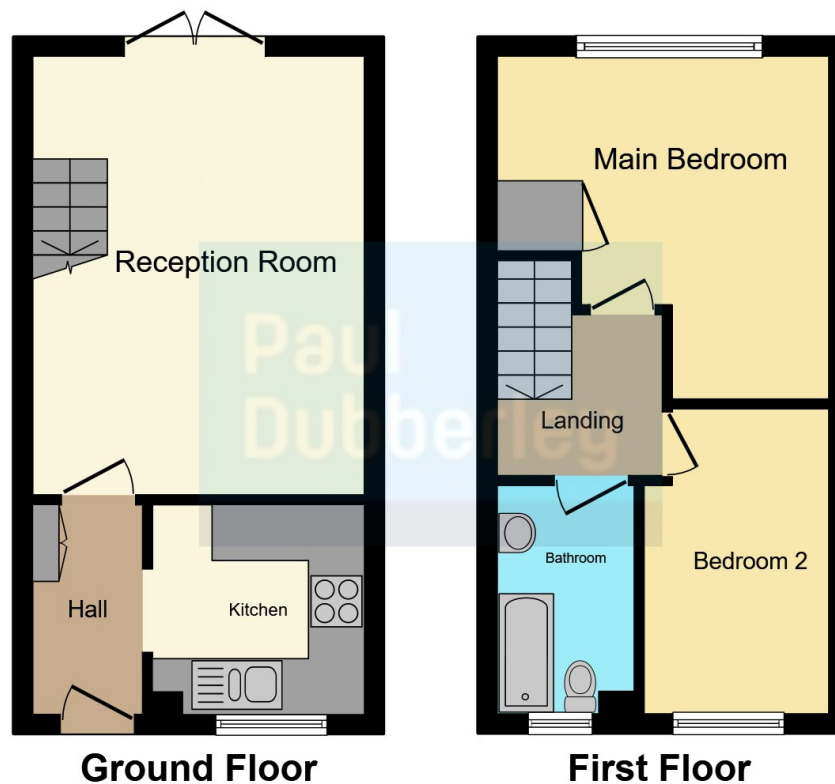
Having an area with decking ideal for putting out your outdoor furniture relaxing and socialising friends and a further lawned area with fence boundaries.

Allocated Parking









This floor plan is for illustrative purposes only. It is not drawn to scale. Any measurements, floor areas (including any total floor area), openings and orientation are approximate. No details are guaranteed, they cannot be relied upon for any purpose and they do not form part of any agreement. No liability is taken for any error, omission or misstatement. A party must rely upon its own inspection(s). Powered by www.focalagent.com

To view this property please contact Connells on

T 01384 214 770
E dudley@connells.co.uk

4 & 5 Stone Street
 DUDLEY DY1 1NS

EPC Rating: D Council Tax
 Band: B

Tenure: Freehold

view this property online connells.co.uk/Property/DUD313963



1. MONEY LAUNDERING REGULATIONS Intending purchasers will be asked to produce identification documentation at a later stage and we would ask for your co-operation in order that there will be no delay in agreeing the sale. 2. These particulars do not constitute part or all of an offer or contract. 3. The measurements indicated are supplied for guidance only and as such must be considered incorrect. Potential buyers are advised to recheck measurements before committing to any expense. 4. We have not tested any apparatus, equipment, fixtures, fittings or services and it is in the buyers interest to check the working condition of any appliances.

Connells Residential is registered in England and Wales under company number 1489613, Registered Office is Cumbria House, 16-20 Hockliffe Street, Leighton Buzzard, Bedfordshire, LU7 1GN. VAT Registration Number is 500 2481 05.

See all our properties at www.connells.co.uk | www.rightmove.co.uk | www.zoopla.co.uk

Property Ref: DUD313963 - 0006