



Connells

Middle Meadow  
Tipton



### Property Description

This detached family home in Tipton is beautifully presented and has been significantly enhanced, situated in a desirable modern development. It boasts generous living areas that can be adapted to suit various needs, and is conveniently positioned near amenities, Tipton and Dudley port train station, future tram connections, and schools.

### Entrance Hall

Solid Oak door to the front elevation, central heating radiator, built-in storage pantry with light.

### Cloakroom

Wash hand basin, low level w.c., central heating radiator, double glazed window to the side.

### Lounge

18' 8" x 11' 4" ( 5.69m x 3.45m )

Double glazed window to the rear, double glazed patio doors to the rear, stairs to first floor accommodation, electric fire with feature surround.

### Dining Room

14' 2" x 7' 5" ( 4.32m x 2.26m )

Double glazed window to the front, central heating radiator.

### Kitchen

13' 7" x 5' 6" ( 4.14m x 1.68m )

A fitted kitchen to include wall and base units with work surfaces over, stainless steel sink & drainer unit with mixer tap over, electric oven & gas hob with extractor, plumbing for washing machine, plumbing for dishwasher, space for domestic appliances, tiling to splashback, wall mounted boiler, central heating radiator, double glazed window to the front, double glazed door to the side.



## First Floor

### Landing

Loft access.

### Bedroom One

11' 2" x 10' 8" ( 3.40m x 3.25m )

Double glazed window to the front, built-in wardrobes, central heating radiator.

### En-Suite

Shower cubicle, wash hand basin, low level w.c., central heating radiator, tiling, extractor fan, double glazed window to the front.

### Bedroom Two

11' 4" x 9' 9" ( 3.45m x 2.97m )

Double glazed window to the rear, central heating radiator.

### Bedroom Three

8' 4" x 8' 1" ( 2.54m x 2.46m )

Double glazed window to the rear, central heating radiator.

### Bathroom

Suite to comprise bath, wash hand basin, low level w.c., tiling, central heating radiator, airing cupboard, double glazed window to the side.

## Outside

To the front of the property tarmac driveway giving off road parking, slabbed approach to front door & slate gravel detail, side access to rear garden. Rear garden having slabbed paved patio area, astro turf area, wooden built canopy, pizza oven & log burner.

### Garage Space

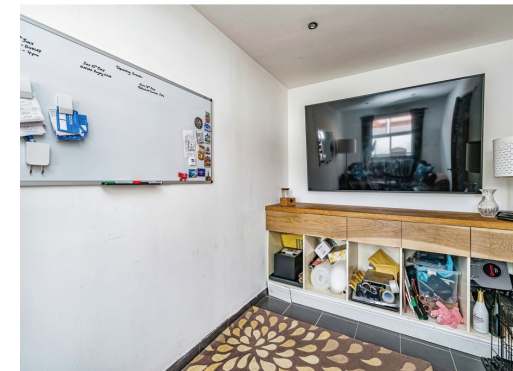
8' 3" x 6' 6" ( 2.51m x 1.98m )

Up and over door to front, with work spaces, sink unit, fitted jet wash, power and light

### Storage Space

8' 9" x 8' 5" ( 2.67m x 2.57m )

door to rear







To view this property please contact Connells on

**T 01384 214 770**  
**E [dudley@connells.co.uk](mailto:dudley@connells.co.uk)**

4 & 5 Stone Street  
DUDLEY DY1 1NS

**EPC Rating: C**

**view this property online [connells.co.uk/Property/DUD313346](https://www.connells.co.uk/Property/DUD313346)**

Tenure: Freehold



1. MONEY LAUNDERING REGULATIONS Intending purchasers will be asked to produce identification documentation at a later stage and we would ask for your co-operation in order that there will be no delay in agreeing the sale. 2. These particulars do not constitute part or all of an offer or contract. 3. The measurements indicated are supplied for guidance only and as such must be considered incorrect. Potential buyers are advised to recheck measurements before committing to any expense. 4. We have not tested any apparatus, equipment, fixtures, fittings or services and it is in the buyers interest to check the working condition of any appliances.

Connells Residential is registered in England and Wales under company number 1489613, Registered Office is Cumbria House, 16-20 Hockliffe Street, Leighton Buzzard, Bedfordshire, LU7 1GN. VAT Registration Number is 500 2481 05.

**See all our properties at [www.connells.co.uk](http://www.connells.co.uk) | [www.rightmove.co.uk](http://www.rightmove.co.uk) | [www.zoopla.co.uk](http://www.zoopla.co.uk)**

Property Ref: DUD313346 - 0003