



Price
£575,000

Freehold

3x  1x  2x 

**Fairlawn Crescent, East
Grinstead, West Sussex,
RH19**

OVER 60?

Secure this property
for up to **59% less!**

cubitt&west
Helping you move forwards



Main features

- Detached bungalow located on a quiet crescent on the popular Imberhorne estate
- Renovated to a very high standard throughout
- Stunning extension offering large dining area with double aspect bi-fold doors
- Private low maintenance garden

Accommodation

GROUND FLOOR

Entrance Hall

Lounge: 12'7 x 11'2 (3.84m x 3.41m)

Dining Area: 15'2 x 11'1 (4.63m x 3.38m)

Cloakroom: 15'3 x 7'2 (4.65m x 2.19m)

Utility Room

Kitchen: 10'7 x 9'6 (3.23m x 2.90m)

Bedroom 1: 11'6 x 11'6 (3.51m x 3.51m)

Bedroom 2: 12'10 x 10'6 (3.91m x 3.20m)

Bedroom 3: 9'7 x 9'5 (2.92m x 2.87m)

Shower Room

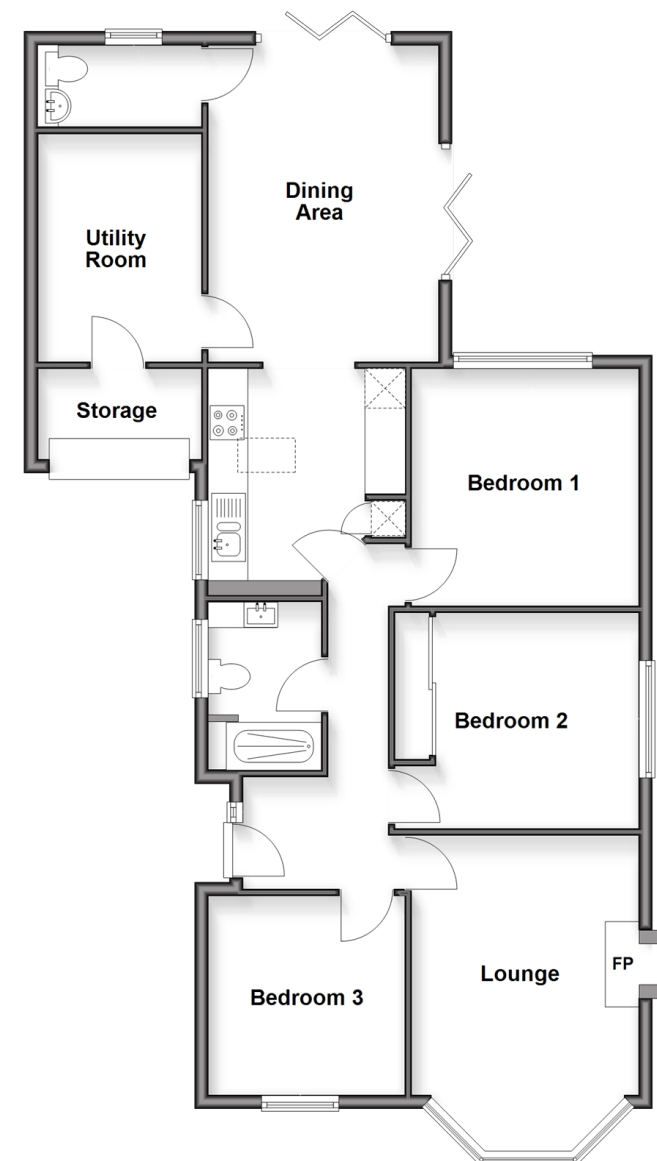
OUTSIDE

Front & Rear Garden

Driveway

Ground Floor

Approx. 98.8 sq. metres (1063.2 sq. feet)



Call East Grinstead - 01342 314324 ■ cubittandwest.co.uk

- Legal advice should be taken to verify fixtures/fittings, planning, alterations and/or lease details
- Appliances & services are untested, dimensions are approximate and floor plans are not to scale
- Through a Homewise Home For Life Plan people aged 60+ can secure this property for up to 50% less, by purchasing a Lifetime Lease.



20614184/20251001/JS/CM