



Price
£550,000

Freehold

3x  3x  2x 

**Clockfield, Turners Hill,
Crawley, West Sussex,
RH10**

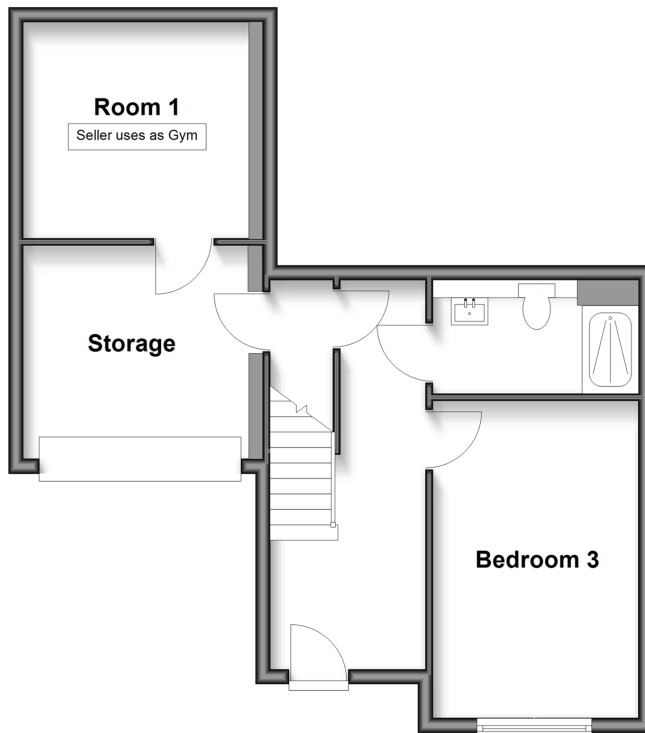
OVER 60?

Secure this property
for up to **59% less!**

cubitt&west
Helping you move forwards

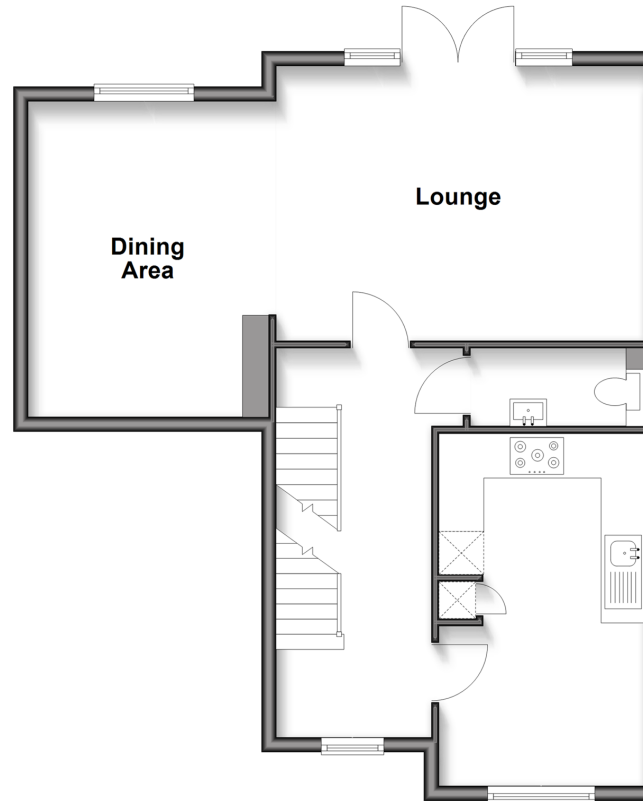
Ground Floor

Approx. 48.1 sq. metres (517.7 sq. feet)



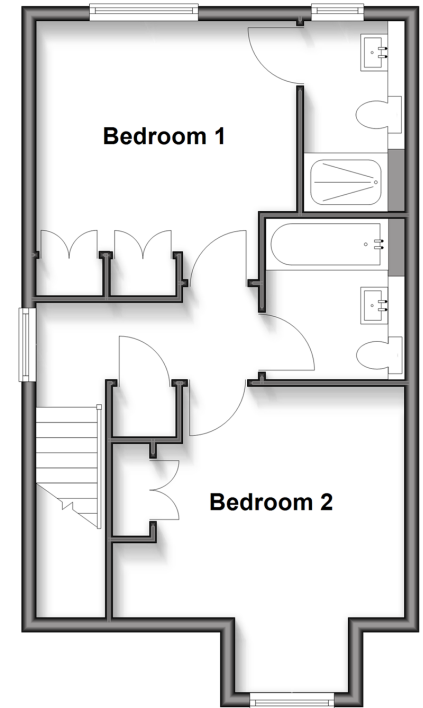
First Floor

Approx. 62.2 sq. metres (669.7 sq. feet)



Second Floor

Approx. 42.3 sq. metres (455.3 sq. feet)



Accommodation

GROUND FLOOR

Entrance Hall
Shower Room
Bedroom 3: 14'3 x 9'8 (4.35m x 2.95m)
Room 1 (seller uses as Gym)
Storage

FIRST FLOOR

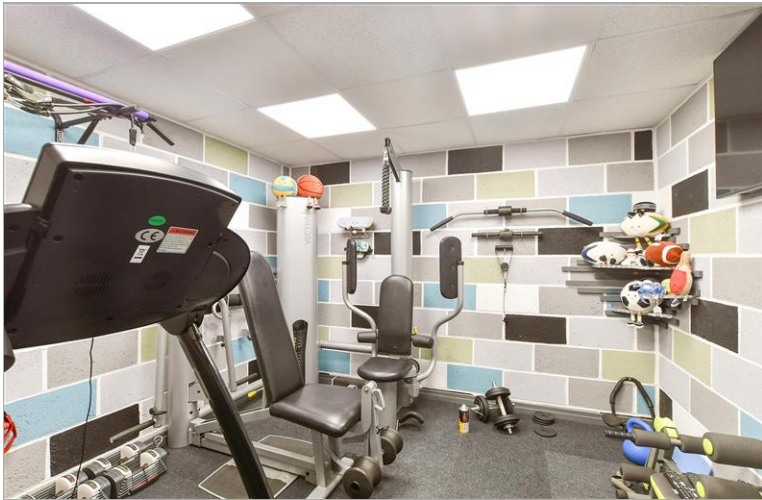
Landing
Cloakroom
Lounge/Dining Area: 27'6 x 13'11 (8.39m x 4.24m)
Kitchen: 15'8 x 9'1 (4.78m x 2.77m)

SECOND FLOOR

Landing
Bedroom 1: 13'7 x 12'9 (4.14m x 3.89m)
En-Suite Shower Room
Bedroom 2: 11'5 x 9'9 (3.48m x 2.97m)
Bathroom

OUTSIDE

Front & Rear Garden
Garage
Driveway



Main features

- Beautifully presented semi detached town house to a high specification
- Generous lounge/diner opening to sunny garden
- Attached garage partially converted to a gym
- Spacious and versatile accommodation over 3 floors
- Located in a popular village with nearby primary school, shops and country pubs



Nearest Schools

Primary Schools: Turners Hill CofE Primary 0.1 miles, Crawley Down Village CofE 1.4 miles, West Hoathly CofE Primary 2.2 miles

Secondary Schools: Worth School 1.7 miles, Philpots



Transport Information

Train Stations: East Grinstead 3.2 miles, Three Bridges 3.4 miles, Balcombe 4.1 miles



Address

Clockfield, Turners Hill, Crawley, West Sussex, RH10



Directions

For directions to this property please contact us.



cubitt&west
Helping you move forwards

Call East Grinstead Branch 01342 314324 ■ cubittandwest.co.uk



■ Legal advice should be taken to verify fixtures/fittings, planning, alterations and/or lease details ■ Appliances & services are untested, dimensions are approximate and floor plans are not to scale
■ Through a Homewise Home For Life Plan people aged 60+ can secure this property for up to 59% less, by purchasing a Lifetime Lease.



20614312/20250604/JS/EM20