



Price
£575,000

Freehold

4x  3x  2x 

**The Limes, Felbridge,
West Sussex, RH19**

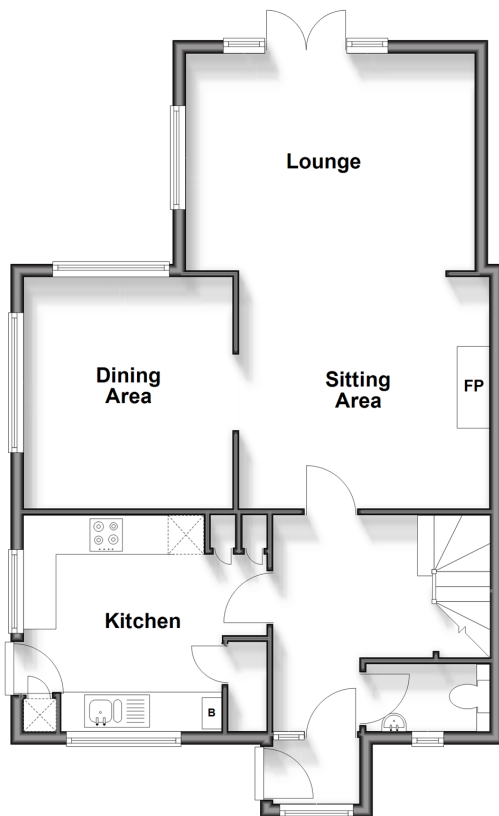
OVER 60?

Secure this property
for up to **59% less!**

cubitt&west
Helping you move forwards

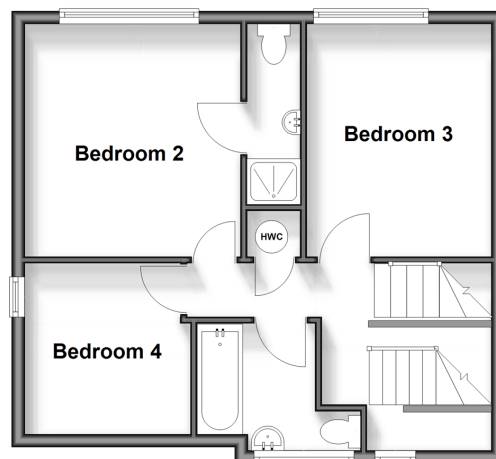
Ground Floor

Approx. 66.6 sq. metres (717.0 sq. feet)



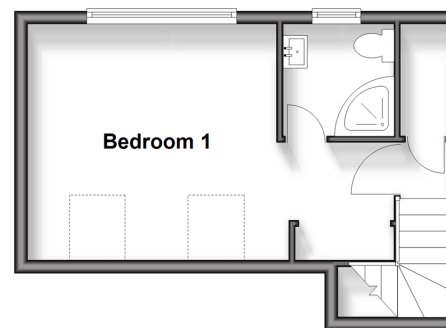
First Floor

Approx. 46.0 sq. metres (495.0 sq. feet)



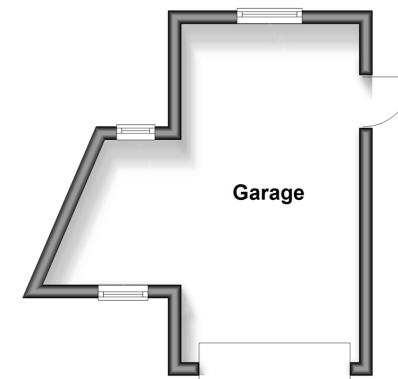
Second Floor

Approx. 25.0 sq. metres (269.2 sq. feet)



Outbuilding

Approx. 17.9 sq. metres (192.7 sq. feet)



Accommodation

GROUND FLOOR

Entrance Porch
Entrance Hall
Cloakroom
Kitchen: 12'0 x 10'9 (3.66m x 3.28m)
Dining Area: 11'9 x 10'8 (3.58m x 3.25m)
Lounge/Sitting Area: 24'2 x 15'4 (7.37m x 4.68m)

FIRST FLOOR

Landing
Bedroom 2: 13'1 x 11'7 (3.99m x 3.53m)
En-Suite Shower Room
Bedroom 3: 12'3 x 9'6 (3.74m x 2.90m)
Bedroom 4: 9'2 x 8'3 (2.80m x 2.52m)
Bathroom

SECOND FLOOR

Landing
Bedroom 1: 17'1 x 11'9 (5.21m x 3.58m)
En-Suite Shower Room

OUTSIDE

Front & Rear Garden
Driveway

OUTBUILDING

Garage



Main features

- Semi-detached house with no onward chain
- Generous bedroom 1 with en-suite shower room
- Easy maintainable wrap around garden and large driveway
- Well decorated throughout with loft extension
- Situated in a sought after private road in Felbridge



Nearest Schools

Primary Schools: Felbridge Primary 0.3 miles, Baldwins Hill Primary, East Grinstead 0.8 miles, Halsford Park Primary 0.9 miles

Secondary Schools: Imberhorne School 0.5 miles,



Transport Information

Train Stations: East Grinstead 2.2 miles, Lingfield 4.2 miles, Dormans 4.5 miles



Address

The Limes, Felbridge, West Sussex, RH19



Directions

For directions to this property please contact us.



cubitt&west
Helping you move forwards

Call East Grinstead Branch 01342 314324 ■ cubittandwest.co.uk



■ Legal advice should be taken to verify fixtures/fittings, planning, alterations and/or lease details ■ Appliances & services are untested, dimensions are approximate and floor plans are not to scale
■ Through a Homewise Home For Life Plan people aged 60+ can secure this property for up to 59% less, by purchasing a Lifetime Lease.



20614260/20250522/EM20/CB