



Guide Price
£675,000

Freehold

5x  3x  4x 

**Hammerwood Road,
Ashurst Wood, West
Sussex, RH19**

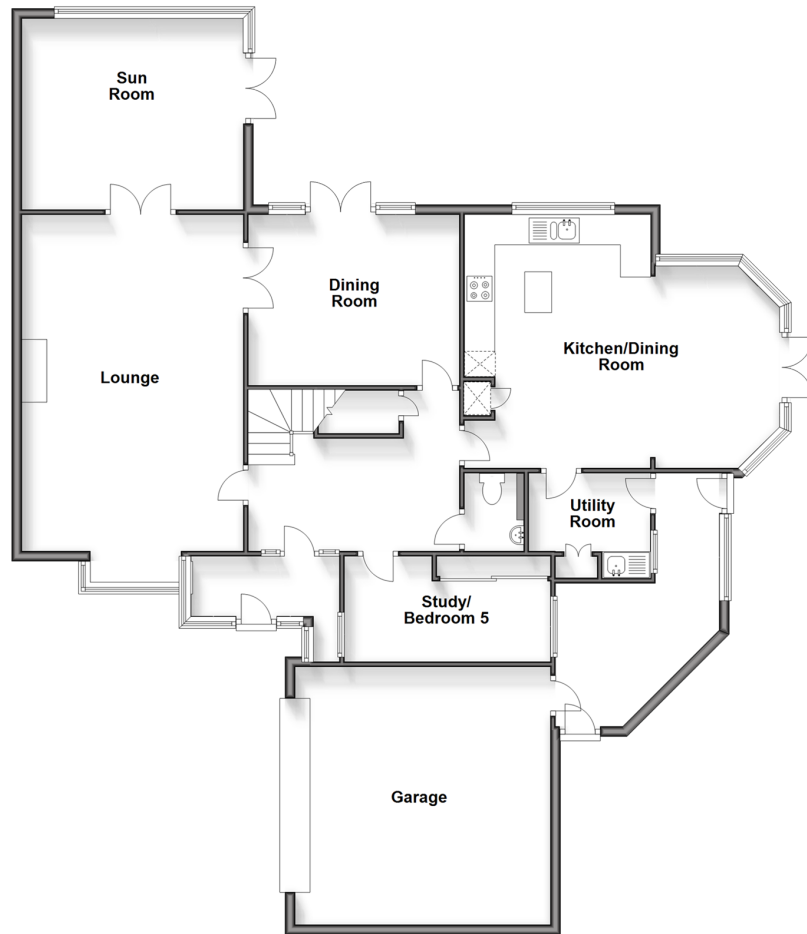
OVER 60?

Secure this property
for up to **59% less!**

cubitt&west
Helping you move forwards

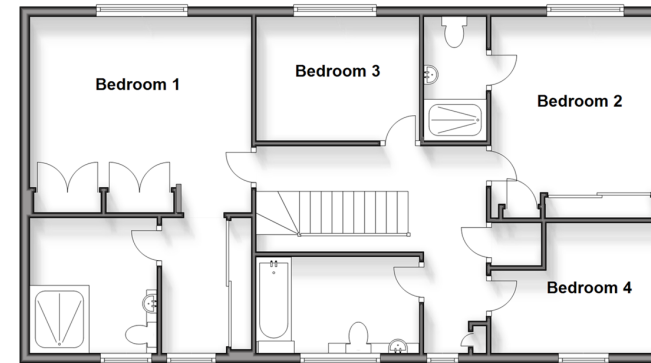
Ground Floor

Approx. 163.3 sq. metres (1758.0 sq. feet)



First Floor

Approx. 83.7 sq. metres (901.4 sq. feet)



Accommodation

GROUND FLOOR

Entrance Porch
Entrance Hall
Cloakroom
Lounge: 22'0 x 14'6 (6.71m x 4.42m)
Dining Room: 13'8 x 12'0 (4.17m x 3.66m)
Sun Room: 14'5 x 12'8 (4.40m x 3.86m)
Kitchen/Dining Room: 19'5 x 14'7 (5.92m x 4.45m)
Utility Room
Study/Bedroom 5: 13'6 x 9'7 (4.12m x 2.92m)

FIRST FLOOR

Landing
Bedroom 1: 14'6 x 13'0 (4.42m x 3.97m)
En-Suite Shower Room
Dressing Room
Bedroom 2: 11'4 x 10'7 (3.46m x 3.23m)
En-Suite Shower Room
Bedroom 3: 11'0 x 8'8 (3.36m x 2.64m)
Bedroom 4: 10'5 x 8'3 (3.18m x 2.52m)
Family Bathroom

OUTSIDE

Front & Rear Garden
Double Garage
Driveway
Car Port



Main features

- Detached house with no chain
- Plenty of parking with double garage and car port
- Multi purpose layout
- Spacious bedroom 1 with dressing room and en-suite
- Great location set in the village close to shops and goods schools



Nearest Schools

Primary Schools: Ashurst Wood Primary 0.5 miles, Estcots Primary 1.3 miles, Forest Row C of E Primary 1.6 miles

Secondary Schools: Sackville School 1.3 miles, Michael Hall School 2.1 miles, Greenfields School 2.4 miles



Transport Information

Train Stations: East Grinstead 2.2 miles, Dormans 4.3 miles, Edenbridge Town 6.3 miles



Address

Hammerwood Road, Ashurst Wood, West Sussex, RH19



Directions

For directions to this property please contact us.



cubitt&west
Helping you move forwards

Call East Grinstead Branch 01342 314324 ■ cubittandwest.co.uk



- Legal advice should be taken to verify fixtures/fittings, planning, alterations and/or lease details
- Appliances & services are untested, dimensions are approximate and floor plans are not to scale
- Through a Homewise Home For Life Plan people aged 60+ can secure this property for up to 59% less, by purchasing a Lifetime Lease.



20614172/20250206/CB/CB