



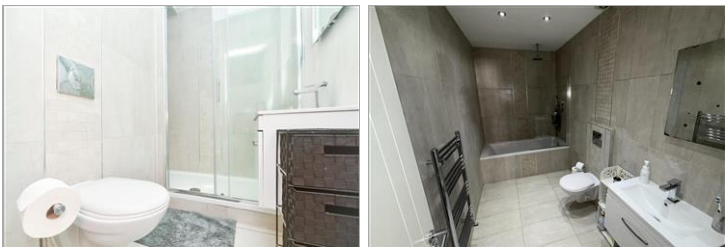
**Price**  
**£250,000**

**Leasehold**

2x  2x  1x 

**London Road, Felbridge,  
West Sussex, RH19**

**cubitt&west**  
Helping you move forwards



## Main features

- Modern first floor apartment
- Resident Parking Permits available
- Large entrance hall
- Very light with high ceilings
- Recently renovated apartment with a handy utility room
- Great location in the heart of the town, close to all amenities

## Accommodation

### FIRST FLOOR

#### Entrance Hall

Lounge: 16'0 x 12'8 (4.88m x 3.86m)

Kitchen/Dining Area: 12'7 x 10'8 (3.84m x 3.25m)

Utility Room: 11'1 x 7'6 (3.38m x 2.29m)

Bedroom 1: 15'1 x 7'8 (4.60m x 2.34m)

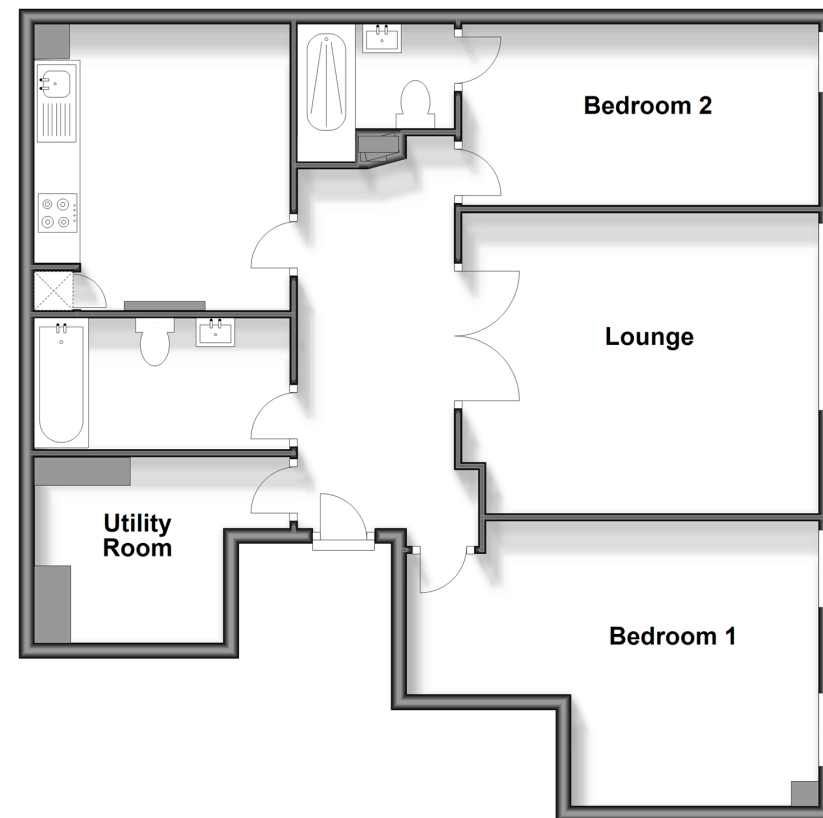
Bedroom 2: 18'10 (5.74m) x 10'7 (3.23m) narrowing to 6'1 at narrowest point (1.86m)

#### En-Suite Shower Room

Bathroom: 11'3 x 5'6 (3.43m x 1.68m)

### First Floor

Approx. 85.8 sq. metres (923.4 sq. feet)



**Call East Grinstead - 01342 314324 ■ [cubittandwest.co.uk](http://cubittandwest.co.uk)**

- Legal advice should be taken to verify fixtures/fittings, planning, alterations and/or lease details
- Appliances & services are untested, dimensions are approximate and floor plans are not to scale

