

OVER 60?

Secure this property
for up to **59% less!**



Guide Price

£675,000

Freehold

3x  2x  2x 

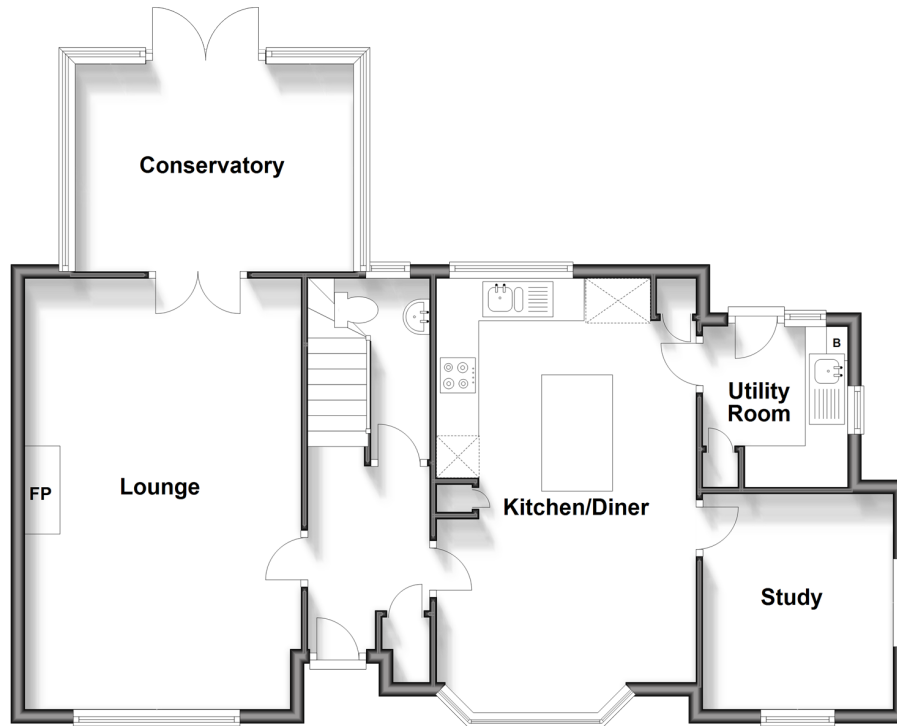
Priory Road, Forest Row, East Sussex,

RH18

cubitt & west
Helping you move forwards

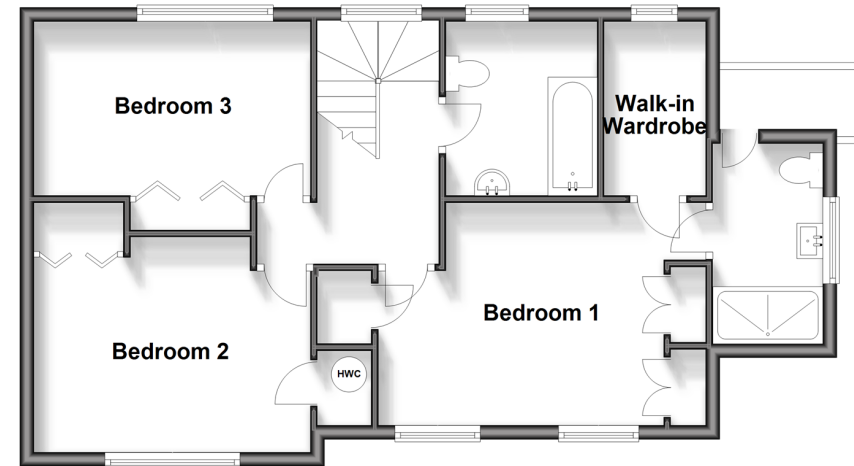
Ground Floor

Approx. 81.5 sq. metres (877.4 sq. feet)



First Floor

Approx. 60.9 sq. metres (655.8 sq. feet)



Accommodation

GROUND FLOOR

Entrance Hall

Cloakroom

Lounge: 19'8 x 12'8 (6.00m x 3.86m)

Conservatory: 12'9 x 9'9 (3.89m x 2.97m)

Kitchen/Diner: 20'8 x 11'5 (6.30m x 3.48m)

Utility Room: 7'7 x 6'6 (2.31m x 1.98m)

Study: 9'9 x 8'8 (2.97m x 2.64m)

FIRST FLOOR

Landing

Bedroom 1: 12'1 x 10'5 (3.69m x 3.18m)

En-Suite Shower Room

Walk-in Wardrobe

Bedroom 2: 12'8 x 9'9 (3.86m x 2.97m)

Bedroom 3: 12'8 x 7'6 (3.86m x 2.29m)

Bathroom

OUTSIDE

Front & Rear Gardens

Driveway

Garage



Main features

- Detached house with en-suite for bedroom 1
- Garage and driveway parking
- Corner plot with wrap around garden
- Close proximity to shops and the beautiful Ashdown Forest
- Walking distance to good schools in this historical village



Nearest Schools

Primary Schools: Forest Row C of E Primary 0.2 miles, Ashurst Wood Primary 1.0 miles, Estcots Primary 2.2 miles
Secondary Schools: Michael Hall School 0.4 miles, Greenfields School 0.8 miles, Sackville School 2.2 miles



Transport Information

Train Stations: East Grinstead 2.9 miles, Dormans 4.2 miles, Cowden 5.3 miles



Address

Priory Road, Forest Row, East Sussex, RH18



Directions

For directions to this property please contact us.



cubitt&west
Helping you move forwards

Call East Grinstead Branch 01342 314324 ■ cubittandwest.co.uk



- Legal advice should be taken to verify fixtures/fittings, planning, alterations and/or lease details
- Appliances & services are untested, dimensions are approximate and floor plans are not to scale
- Through a Homewise Home For Life Plan people aged 60+ can secure this property for up to 59% less, by purchasing a Lifetime Lease.

EPC RATING

CURRENT: D(64) POTENTIAL: C(77)

20614139/20241102/JS/CB