



Guide Price
£250,000

Leasehold

2x  2x  1x 

**Suva Court, London
Road, East Grinstead,
West Sussex, RH19**

OVER 60?

Secure this property
for up to **59% less!**

cubitt & west
Helping you move forwards



Main features

- **£250,000-£260,000**
- **Second floor apartment**
- **Off road allocated residents parking in gated car park**
- **Recently updated boiler and heating system**
- **Bright and spacious in good order with integrated kitchen appliances**
- **Very well located and set back from the main road, a short walk from shops and transport links**

Accommodation

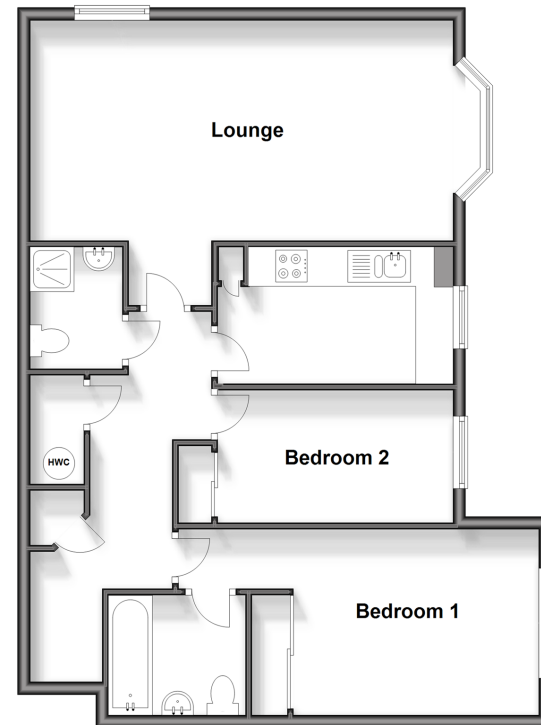
SECOND FLOOR

- Entrance Hall
- Lounge: 24'0 into bay x 21'9 (7.32m x 6.63m)
- Kitchen: 12'4 x 7'0 (3.76m x 2.14m)
- Bedroom 1: 12'3 x 6'8 (3.74m x 2.03m)
- En-Suite Bathroom
- Bedroom 2: 13'1 x 9'6 (3.99m x 2.90m)
- Shower Room

OUTSIDE

- Communal Gardens
- Allocated Parking

Second Floor
Approx. 76.9 sq. metres (827.2 sq. feet)



Call East Grinstead - 01342 314324 ■ cubittandwest.co.uk

■ Legal advice should be taken to verify fixtures/fittings, planning, alterations and/or lease details
 ■ Through a Homewise Home For Life Plan people aged 60+ can secure this property for up to 59% less, by purchasing a Lifetime Lease.

■ Appliances & services are untested, dimensions are approximate and floor plans are not to scale



20614106/20241018/JS/CM