



Price
£165,000

Leasehold

1x  1x  1x 

**Yew Court, Newlands
Crescent, East
Grinstead, West Sussex,
RH19**

cubitt & west
Helping you move forwards



First Floor

Approx. 49.5 sq. metres (532.9 sq. feet)

Main features

- First floor flat with lease to be extended upon completion
- CHAIN FREE!
- Communal garden
- Cul-de-sac location
- Beautiful views from both front and rear of apartment
- Great location as a short walk from mainline train station

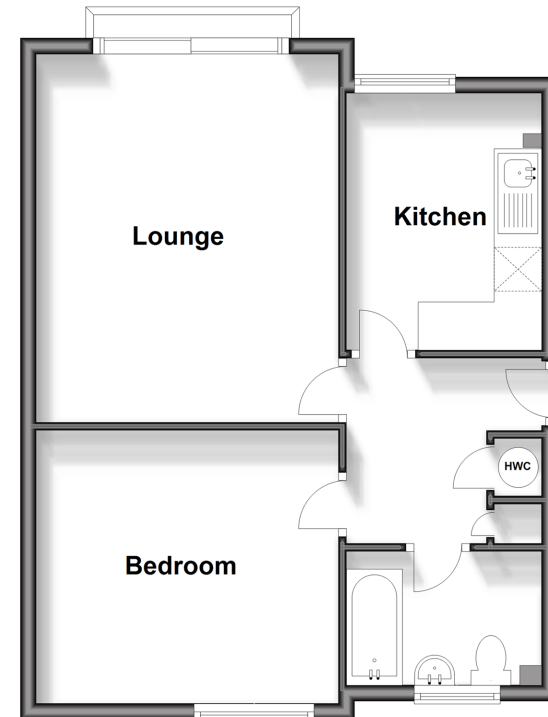
Accommodation

FIRST FLOOR

- Entrance Hall
- Kitchen: 14'12 x 13'5 (4.57m x 4.09m)
- Lounge: 19'3 x 15'8 (5.87m x 4.78m)
- Bathroom
- Bedroom: 15'2 x 12'5 (4.63m x 3.79m)

OUTSIDE

- Communal Garden



Call East Grinstead - 01342 314324 ■ cubittandwest.co.uk

■ Legal advice should be taken to verify fixtures/fittings, planning, alterations and/or lease details

■ Appliances & services are untested, dimensions are approximate and floor plans are not to scale

EPC RATING	CURRENT	POTENTIAL
	D(68)	B(82)



20614062/20240709/JS/CB