



Price

£1,500,000

Freehold

5x  2x  4x 

East Street, Turners Hill,
West Sussex, RH10

OVER 60?

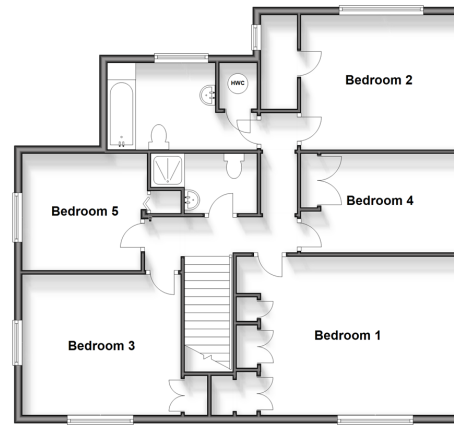
Secure this property
for up to **59% less!**

cubitt & west
Helping you move forwards

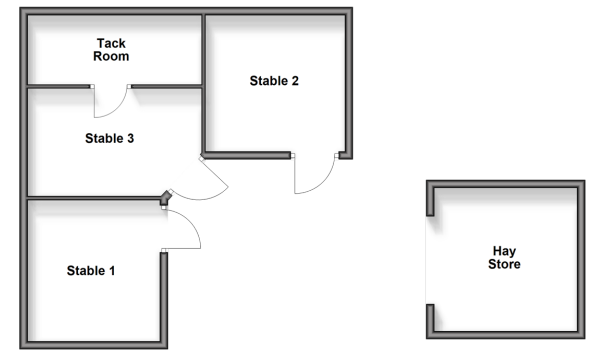
Ground Floor
Approx. 156.5 sq. metres (1684.4 sq. feet)



First Floor
Approx. 95.2 sq. metres (1025.0 sq. feet)



Outbuilding
Approx. 55.3 sq. metres (595.7 sq. feet)



Accommodation

GROUND FLOOR

Entrance Porch
Entrance Hall
Cloakroom
Dining Room: 18'11 x 11'8 (5.77m x 3.56m)
Sitting Area: 18'3 x 9'1 (5.57m x 2.77m)
Kitchen/Breakfast Area: 16'11 x 11'4 (5.16m x 3.46m)

Utility Room: 12'2 x 7'2 (3.71m x 2.19m)
Lounge: 21'6 x 13'2 (6.56m x 4.02m)
Conservatory: 13'4 x 11'8 (4.07m x 3.56m)

FIRST FLOOR

Landing
Bedroom 1: 18'11 x 11'8 (5.77m x 3.56m)
Bedroom 2: 12'0 x 11'4 (3.66m x 3.46m)
Bedroom 3: 13'1 x 11'8 (3.99m x 3.56m)
Bedroom 4: 13'4 x 9'1 (4.07m x 2.77m)
Bedroom 5: 10'3 x 9'10 (3.13m x 3.00m)
Shower Room
Bathroom: 12'2 x 7'11 (3.71m x 2.41m)

OUTSIDE

Wrap Around Garden
Garage: 20'4 x 20'3 (6.20m x 6.18m)
Stables
Sand School



Main features

- Detached house approached by a private road
- Generous plot of land at 11.71 acres
- Handsomely decorated throughout with character features, oil fuelled Aga and new windows.
- Equestrian facilities including 3 stables, sand school, tack room and 2 field shelters
- Large wrap around plot with stunning views and woodlands



Nearest Schools

Primary Schools: Turners Hill CofE Primary 0.5 miles, Crawley Down Village CofE 1.0 miles, West Hoathly CofE Primary 2.3 miles
Secondary Schools: Worth School 2.1 miles, Imberhorne School 2.5 miles, Philpots Manor School 2.5 miles



Transport Information

Train Stations: East Grinstead 2.8 miles, Three Bridges 3.6 miles, Balcombe 4.5 miles



Address

East Street, Turners Hill, West Sussex, RH10



Directions

For directions to this property please contact us.



cubitt&west
Helping you move forwards

Call East Grinstead Branch 01342 314324 ■ cubittandwest.co.uk



- Legal advice should be taken to verify fixtures/fittings, planning, alterations and/or lease details
- Appliances & services are untested, dimensions are approximate and floor plans are not to scale
- Through a Homewise Home For Life Plan people aged 60+ can secure this property for up to 59% less, by purchasing a Lifetime Lease.

EPC RATING

CURRENT: **E(43)** POTENTIAL: **C(75)**

20613922/20240427/JS/CB