



**Guide Price**  
**£550,000**

**Freehold**

4x  2x  1x 

**Sopers, Turners Hill,  
West Sussex, RH10**

**OVER 60?**

Secure this property  
for up to **59% less!**

**cubitt & west**  
Helping you move forwards



## Main features

- **Guide Price £550,000-£575,000**
- **Semi-detached house in a village location**
- **Large sunny garden with private patio area**
- **Rural views**
- **Garage with 2 allocated parking spaces**
- **Built in 2020 with remaining NHBC**

## Accommodation

### GROUND FLOOR

Entrance Hall  
Cloakroom  
Lounge: 13'9 x 10'5 (4.19m x 3.18m)  
Kitchen: 17'6 x 9'0 (5.34m x 2.75m)  
Dining Area: 17'9 x 10'2 (5.41m x 3.10m)

### FIRST FLOOR

Landing  
Bedroom 2: 14'4 x 9'0 (4.37m x 2.75m)  
Bedroom 3: 10'8 x 8'4 (3.25m x 2.54m)  
Bedroom 4: 10'4 x 9'0 (3.15m x 2.75m)  
Bathroom

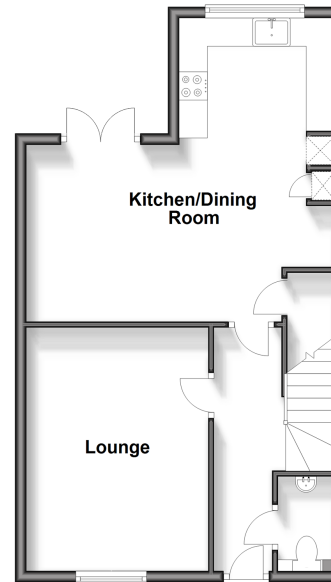
### SECOND FLOOR

Bedroom 1: 14'1 x 10'4 (4.30m x 3.15m)  
En-Suite Shower Room

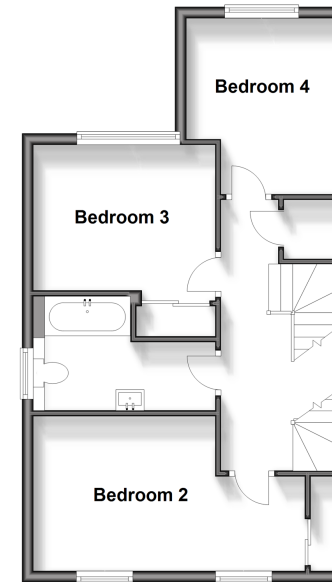
### OUTSIDE

Front & Rear Garden  
Garage  
Allocated Parking Spaces

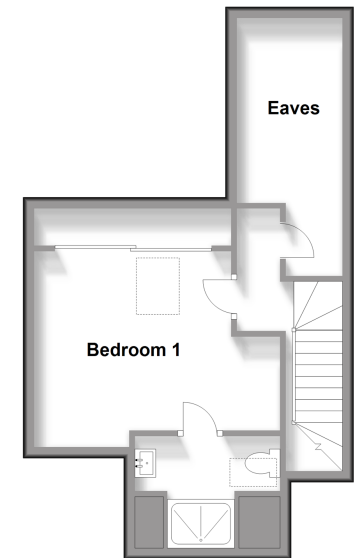
**Ground Floor**  
Approx. 47.3 sq. metres (509.4 sq. feet)



**First Floor**  
Approx. 47.5 sq. metres (511.3 sq. feet)



**Second Floor**  
Approx. 34.6 sq. metres (372.4 sq. feet)



**Call East Grinstead - 01342 314324 ■ cubittandwest.co.uk**

■ Legal advice should be taken to verify fixtures/fittings, planning, alterations and/or lease details  
■ Through a Homewise Home For Life Plan people aged 60+ can secure this property for up to 59% less, by purchasing a Lifetime Lease.

■ Appliances & services are untested, dimensions are approximate and floor plans are not to scale



20613929/20240411/JS/CB