



Guide Price
£240,000

Leasehold

1x  1x  1x 

**Elizabeth Place, Queens
Road, East Grinstead,
West Sussex, RH19**

OVER 60?

Secure this property
for up to **59% less!**

cubitt & west
Helping you move forwards



Main features

- High end third floor apartment with stylish finish
- Allocated residents underground car park
- Far reaching views from balcony
- Development finished in 2019 with long lease and build guarantee
- Beautifully landscaped residents roof garden

Accommodation

THIRD FLOOR

Entrance Hall

Kitchen/Lounge/Diner: 27'7 x 11'2
(8.41m x 3.41m)

Balcony: 8'9 x 5'3 (2.67m x 1.60m)

Bedroom: 23'6 x 8'8 (7.17m x 2.64m)

Bathroom: 7'3 x 6'6 (2.21m x 1.98m)

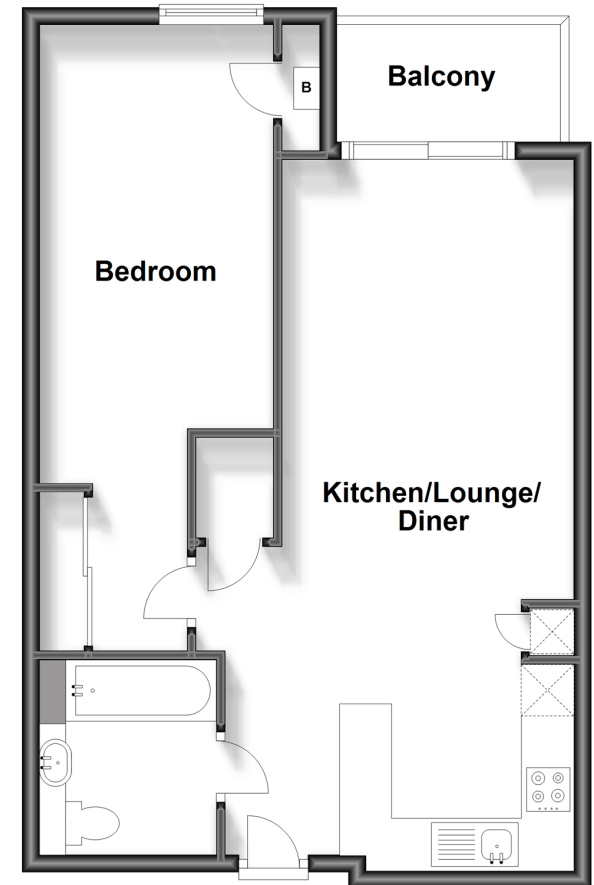
OUTSIDE

Communal Garden

Allocated Parking Space

Third Floor

Approx. 54.4 sq. metres (585.5 sq. feet)



Call East Grinstead - 01342 314324 ■ cubittandwest.co.uk

- Legal advice should be taken to verify fixtures/fittings, planning, alterations and/or lease details
- Appliances & services are untested, dimensions are approximate and floor plans are not to scale
- Through a Homewise Home For Life Plan people aged 60+ can secure this property for up to 59% less, by purchasing a Lifetime Lease.



20613822/20240918/CM/CM