



Price

£390,000

Leasehold

2x  2x  1x 

**Harrowlands Park,
Dorking, Surrey, RH4**

OVER 60?

Secure this property
for up to **59% less!**

cubitt&west
Helping you move forwards



Main features

- Stunning recently modernised ground floor maisonette
- Private patio and communal garden
- Garage en-bloc and allocated parking
- Air conditioning/heating unit in Bedroom 1
- Easy access to Dorking High Street, stations and schools

Accommodation

GROUND FLOOR

Entrance Hall

Lounge/Diner: 20'4 x 13'6 (6.20m x 4.12m)

Kitchen/Breakfast Room: 12'2 x 9'4 (3.71m x 2.85m)

Bedroom 1: 16'0 max x 12'9 (4.88m x 3.89m)

En-suite Shower Room

Bedroom 2: 9'11 max x 8'10 (3.02m x 2.69m)

Shower Room

OUTSIDE

Private Patio

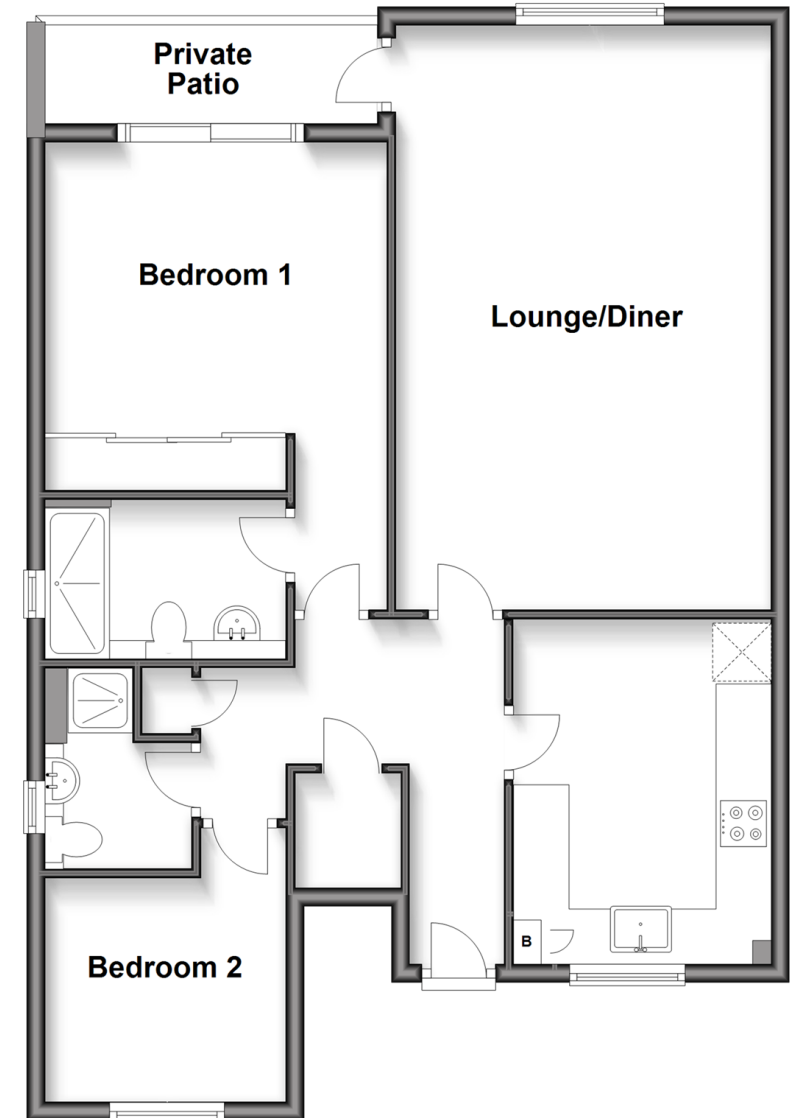
Communal Garden

Allocated Parking Space

Garage En-bloc

Ground Floor

Approx. 78.6 sq. metres (845.5 sq. feet)



Call Dorking - 01306 883399 ■ cubittandwest.co.uk

- Legal advice should be taken to verify fixtures/fittings, planning, alterations and/or lease details
- Appliances & services are untested, dimensions are approximate and floor plans are not to scale
- Through a Homewise Home For Life Plan people aged 60+ can secure this property for up to 59% less, by purchasing a Lifetime Lease.



20511445/20250222/CFE/JG