



Price
£450,000

Freehold

2x  1x  2x 

**Riverside, Dorking,
Surrey, RH4**

OVER 60?

Secure this property
for up to **59% less!**

cubitt&west
Helping you move forwards



Main features

- 2 reception rooms, log burner in lounge
- Good size garden leading to Mill Stream which connects to River Mole
- Stunning views to Box Hill and Pixham viaduct
- Countryside walks on your doorstep
- Sought after location close to stations, High Street and schools

Accommodation

GROUND FLOOR

Kitchen: 9'9 x 6'1 (2.97m x 1.86m)

Lounge: 11'0 x 9'0 (3.36m x 2.75m)

Family Room: 11'10 x 10'8 (3.61m x 3.25m)

Bathroom

FIRST FLOOR

Landing

Bedroom 1: 10'11 max x 9'10 (3.33m x 3.00m)

Bedroom 2: 10'11 max x 8'11 (3.33m x 2.72m)

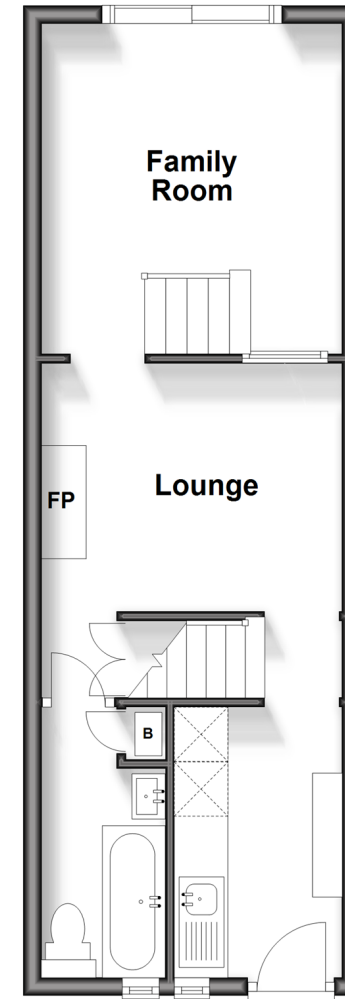
OUTSIDE

Front Garden

Rear Garden

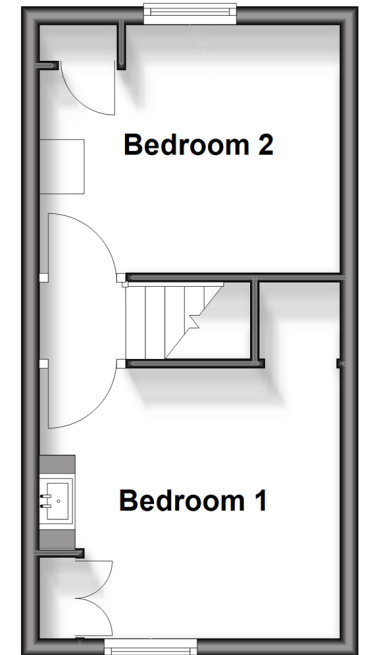
Split Level Ground Floor

Approx. 35.3 sq. metres (380.1 sq. feet)



First Floor

Approx. 22.7 sq. metres (244.8 sq. feet)



Call Dorking - 01306 883399 ■ cubittandwest.co.uk

- Legal advice should be taken to verify fixtures/fittings, planning, alterations and/or lease details
- Appliances & services are untested, dimensions are approximate and floor plans are not to scale
- Through a Homewise Home For Life Plan people aged 60+ can secure this property for up to 59% less, by purchasing a Lifetime Lease.

