



OVER 60?

Secure this property
for up to **59% less!**

Price

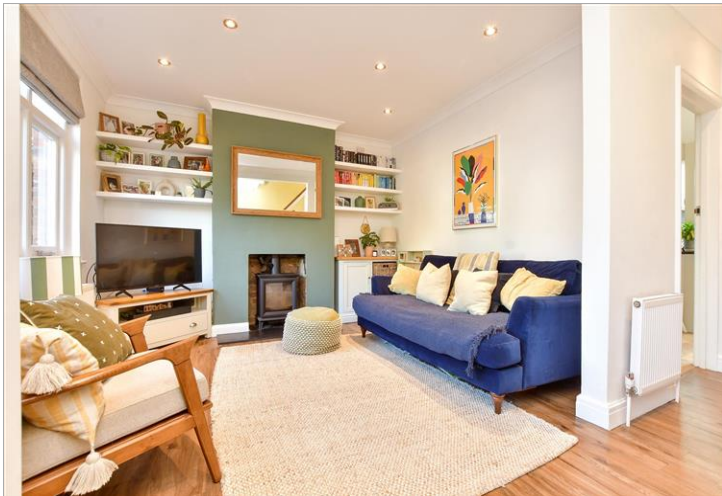
£550,000

Freehold

3x  1x  1x 

**Barrington Court,
Dorking, Surrey, RH4**

cubitt&west
Helping you move forwards



Main features

- Wonderful family home designed for modern day living
- Centralised location close to Dorking High Street, schools and stations
- Bifold doors open to a sunny aspect garden with a home office
- Cosy and inviting lounge complimented with a new log burner
- All bedrooms are doubles

Accommodation

GROUND FLOOR

Entrance

Lounge: 15'10 max x 11'4 (4.83m x 3.46m)

Kitchen: 17'8 x 6'9 (5.39m x 2.06m)

Dining Area: 12'3 x 8'7 (3.74m x 2.62m)

Utility: 8'4 max x 4'3 (2.54m x 1.30m)

FIRST FLOOR

Landing

Bedroom 1: 11'8 x 8'7 (3.56m x 2.62m)

Bedroom 2: 12'3 x 8'2 (3.74m x 2.49m)

Bedroom 3: 11'3 x 9'2 (3.43m x 2.80m)

Bathroom

OUTSIDE

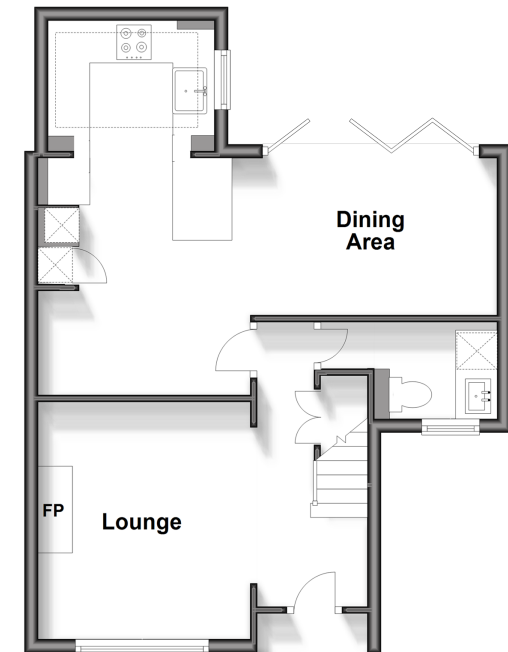
Front Garden

Rear Garden

Garden Office

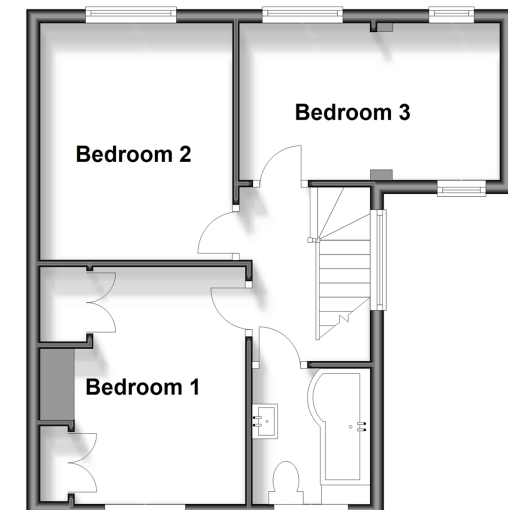
Ground Floor

Approx. 44.0 sq. metres (473.7 sq. feet)



First Floor

Approx. 37.6 sq. metres (404.4 sq. feet)



Call Dorking - 01306 883399 ■ cubittandwest.co.uk

- Legal advice should be taken to verify fixtures/fittings, planning, alterations and/or lease details
- Appliances & services are untested, dimensions are approximate and floor plans are not to scale
- Through a Homewise Home For Life Plan people aged 60+ can secure this property for up to 59% less, by purchasing a Lifetime Lease.



20501276/20250125/CFE/SB