



OVER 60?

Secure this property
for up to **59% less!**

Price

£365,000

Leasehold

2x  2x  1x 

**Highmeadow House, St.
Paul's Road West,
Dorking, Surrey, RH4**

cubitt&west
Helping you move forwards



Main features

- Off road parking (unallocated)
- Edwardian conversion
- Recently refurbished modern kitchen
- Communal gardens wrapping around the property
- Close to Dorking High Street and mainline stations

Accommodation

FIRST FLOOR

Entrance Hall

Living Room: 20'11 x 15'5 into bay (6.38m x 4.70m)

Kitchen: 11'3 x 6'4 (3.43m x 1.93m)

Bedroom 1: 12'1 x 11'4 (3.69m x 3.46m)

En-suite

Bedroom 2: 12'0 max x 9'7 (3.66m x 2.92m)

Bathroom

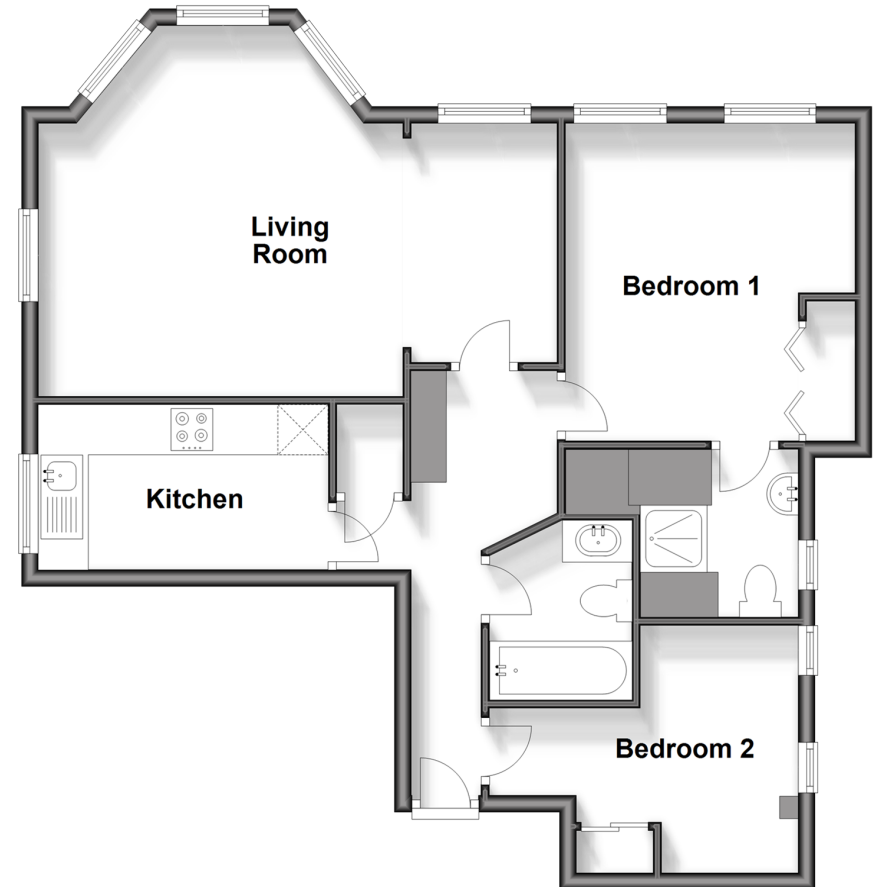
OUTSIDE

Parking

Communal Gardens

First Floor

Approx. 68.8 sq. metres (740.8 sq. feet)



Call Dorking - 01306 883399 ■ cubittandwest.co.uk

- Legal advice should be taken to verify fixtures/fittings, planning, alterations and/or lease details
- Appliances & services are untested, dimensions are approximate and floor plans are not to scale
- Through a Homewise Home For Life Plan people aged 60+ can secure this property for up to 59% less, by purchasing a Lifetime Lease.



20511500/20250215/CFE/SB