



Price

£260,000

Leasehold

2x  1x  1x 

**Cotmandene, Dorking,
Surrey, RH4**

OVER 60?

Secure this property
for up to **59% less!**

cubitt & west
Helping you move forwards



Main features

- Apartment arranged over 2 floors with beautiful views
- Allocated parking
- Only 0.2 miles walk to Dorking high street for all your everyday needs
- Deepdene Park is close by for great walks and trails
- If you're a keen golfer, Dorking Golf Club is next to it

Accommodation

THIRD FLOOR

Entrance Hall

Lounge: 12'10 x 12'6 (3.91m x 3.81m)

Kitchen: 6'7 x 5'3 (2.01m x 1.60m)

Bedroom 2: 11'4 x 11'4 (3.46m x 3.46m)

Bathroom

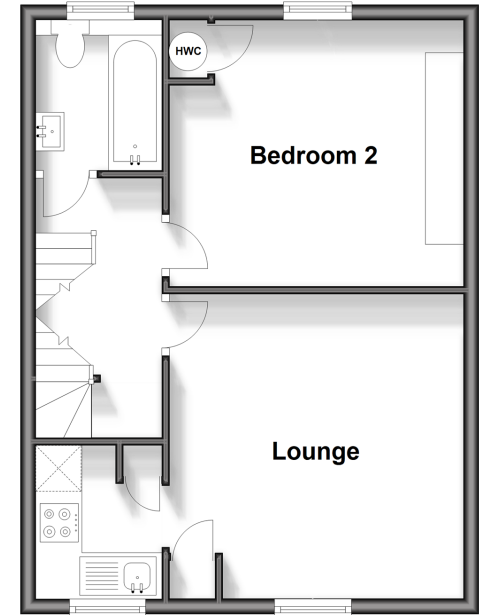
FOURTH FLOOR

Bedroom 1: 18'5 x 14'5 (5.62m x 4.40m)

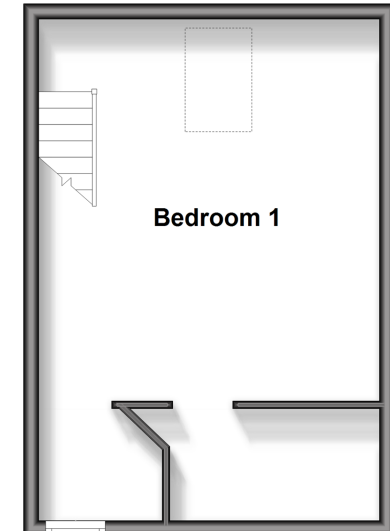
OUTSIDE

Allocated Parking

Third Floor
Approx. 42.3 sq. metres (455.4 sq. feet)



Fourth Floor
Approx. 29.0 sq. metres (312.2 sq. feet)



Call Dorking - 01306 883399 ■ cubittandwest.co.uk

- Legal advice should be taken to verify fixtures/fittings, planning, alterations and/or lease details
- Appliances & services are untested, dimensions are approximate and floor plans are not to scale
- Through a Homewise Home For Life Plan people aged 60+ can secure this property for up to 59% less, by purchasing a Lifetime Lease.



20511348/20241130/CFE/JL