



OVER 60?

Secure this property
for up to **59% less!**

Price

£300,000

Leasehold

2x  1x  1x 

**South Terrace, Dorking,
Surrey, RH4**

cubitt & west
Helping you move forwards



Main features

- Stunning apartment with views over Dorking and towards Ranmore
- Both bedrooms are doubles
- Communal garden and communal parking
- Catchment area of St. Pauls School
- Easy access to Dorking High Street, stations and schools

Accommodation

SECOND FLOOR

Entrance Hall

Lounge: 17'2 x 13'7 (5.24m x 4.14m)

Kitchen: 13'4 x 7'4 (4.07m x 2.24m)

Bedroom 1: 13'11 x 9'6 (4.24m x 2.90m)

Bedroom 2: 14'1 x 8'10 (4.30m x 2.69m)

Bathroom

Separate Toilet

OUTSIDE

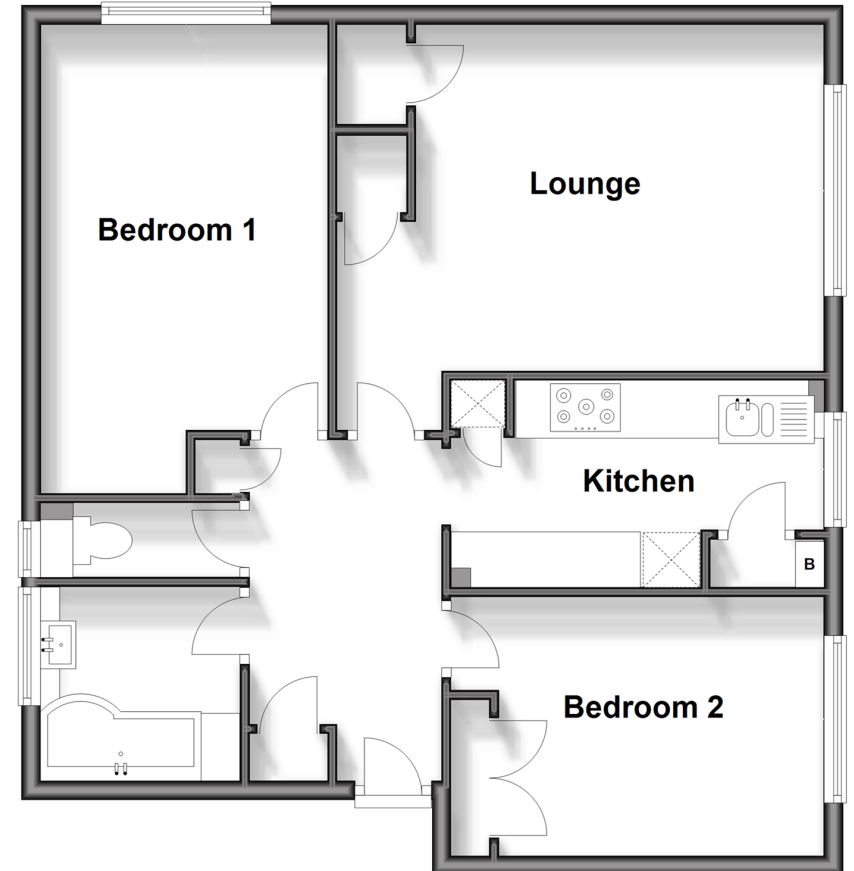
Private Brick Built Shed

Communal Parking

Communal Garden

Second Floor

Approx. 67.9 sq. metres (730.8 sq. feet)



Call Dorking - 01306 883399 ■ cubittandwest.co.uk

- Legal advice should be taken to verify fixtures/fittings, planning, alterations and/or lease details
- Appliances & services are untested, dimensions are approximate and floor plans are not to scale
- Through a Homewise Home For Life Plan people aged 60+ can secure this property for up to 59% less, by purchasing a Lifetime Lease.



20511419/20240921/CFE/JG