



Price
£325,000

Leasehold

2x  1x  1x 

**Tranquil Dale, Buckland,
Betchworth, Surrey, RH3**

OVER 60?

Secure this property
for up to **59% less!**

cubitt & west
Helping you move forwards



Main features

- Private rear garden and shed surrounded by countryside
- Both bedrooms are doubles
- Scope to modernise and update
- Bright and spacious accommodation
- Easy reach to Dorking and Reigate with their stations, schools and amenities

Accommodation

FIRST FLOOR

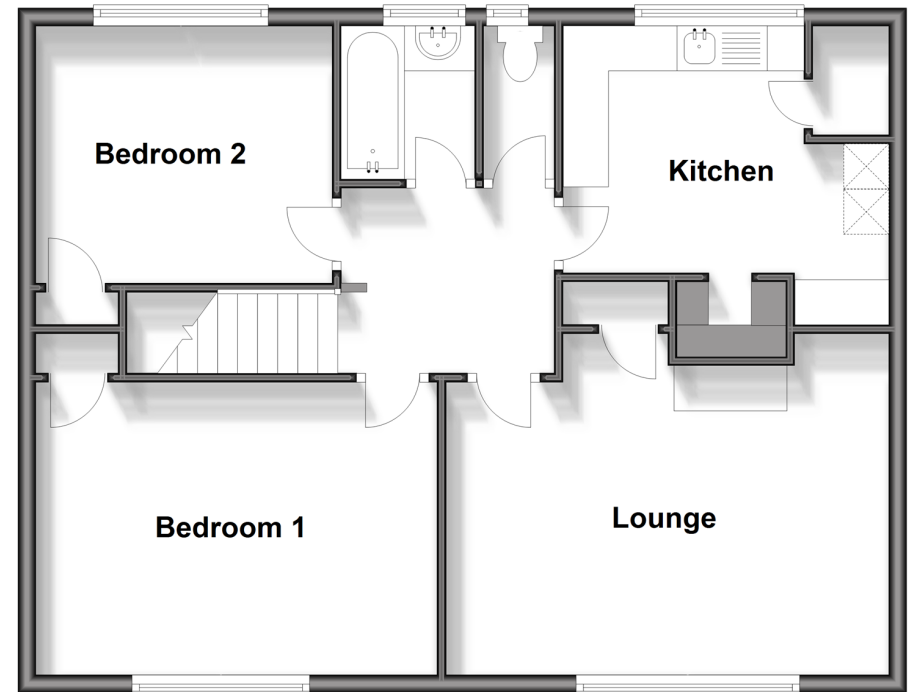
- Landing
- Lounge: 16'0 x 12'11 (4.88m x 3.94m)
- Kitchen: 11'9 max x 9'2 (3.58m x 2.80m)
- Bedroom 1: 14'7 x 10'7 (4.45m x 3.23m)
- Bedroom 2: 10'7 x 9'6 (3.23m x 2.90m)
- Separate Toilet
- Bathroom

OUTSIDE

- Rear Garden

First Floor

Approx. 68.0 sq. metres (732.5 sq. feet)



Call Dorking - 01306 883399 ■ cubittandwest.co.uk

■ Legal advice should be taken to verify fixtures/fittings, planning, alterations and/or lease details
 ■ Through a Homewise Home For Life Plan people aged 60+ can secure this property for up to 59% less, by purchasing a Lifetime Lease.

■ Appliances & services are untested, dimensions are approximate and floor plans are not to scale



20511406/20240928/CFE/JL