



OVER 60?

Secure this property
for up to **59% less!**

Price
£385,000

Freehold

3x  1x  2x 

**Orchard Cottages,
Horsham Road, Mid
Holmwood, Dorking,
Surrey, RH5**

cubitt & west
Helping you move forwards



Main features

- Modern and ready to move straight into
- Sunny aspect garden with decked patio area and brick built shed
- Open plan lounge/diner
- Character cottage with log burner
- Ample Parking

Accommodation

GROUND FLOOR

Entrance

Lounge: 11'0 x 10'3 (3.36m x 3.13m)

Dining Area: 12'11 x 11'6 (3.94m x 3.51m)

Kitchen: 11'9 x 11'3 (3.58m x 3.43m)

FIRST FLOOR

Landing

Bedroom 1: 11'10 x 11'4 (3.61m x 3.46m)

Bedroom 2: 11'1 max x 11'0 (3.38m x 3.36m)

Bedroom 3: 8'5 x 6'10 (2.57m x 2.08m)

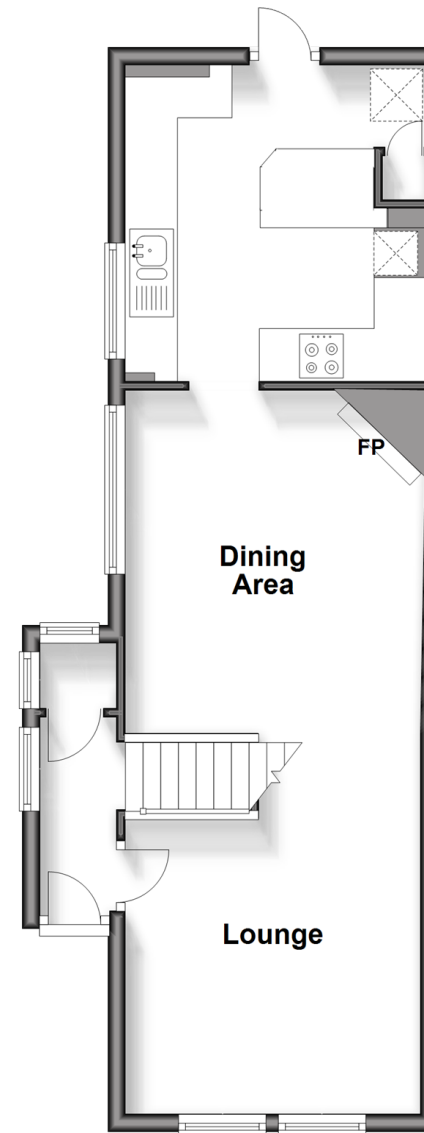
OUTSIDE

Front Garden

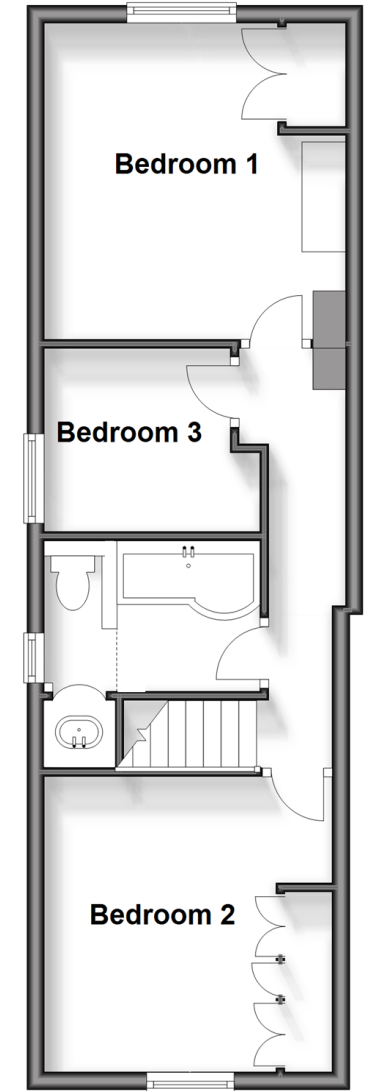
Rear Garden

Brick Built Shed

Ground Floor
Approx. 43.7 sq. metres (470.7 sq. feet)



First Floor
Approx. 40.4 sq. metres (434.4 sq. feet)



Call Dorking - 01306 883399 ■ cubittandwest.co.uk

- Legal advice should be taken to verify fixtures/fittings, planning, alterations and/or lease details
- Appliances & services are untested, dimensions are approximate and floor plans are not to scale
- Through a Homewise Home For Life Plan people aged 60+ can secure this property for up to 59% less, by purchasing a Lifetime Lease.



20511387/20240817/CFE/JL