

OVER 60?

Secure this property
for up to **59% less!**



Price

£425,000

Freehold

2x  1x  1x 

Cotmandene, Dorking, Surrey, RH4

cubitt & west
Helping you move forwards



Main features

- Full of character, charm and quirky features
- Vaulted ceiling in kitchen and bedroom 1
- Just minutes from the High Street and a short walk to stations
- Front courtyard garden
- No chain

Accommodation

GROUND FLOOR

Entrance Hall

Lounge: 15'1 x 10'0 (4.60m x 3.05m)

Kitchen/Diner: 13'2 x 7'7 (4.02m x 2.31m)

Bedroom 2: 10'1 x 8'2 (3.08m x 2.49m)

FIRST FLOOR

Landing

Bedroom 1: 13'3 up to fitted wardrobes x 9'10 (4.04m x 3.00m)

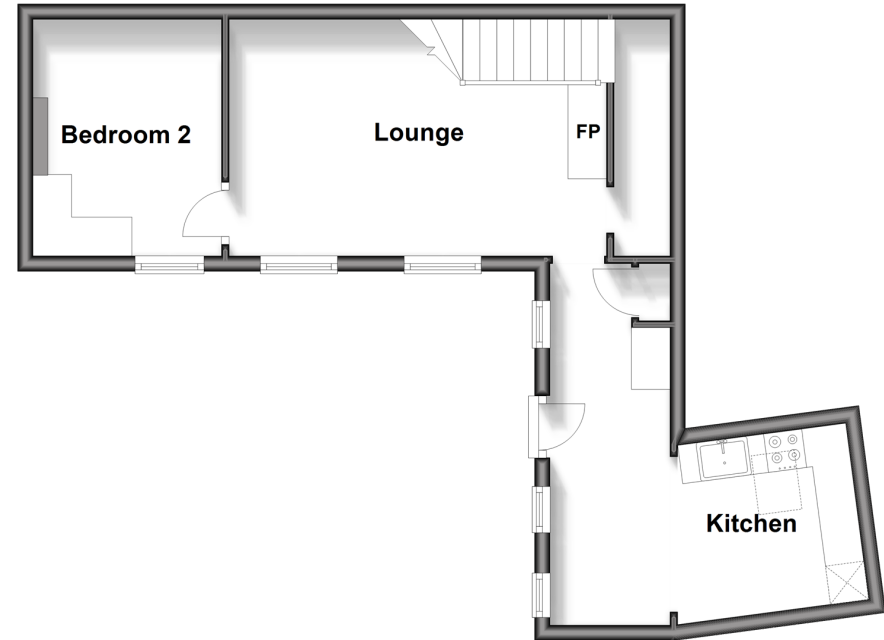
Bathroom

OUTSIDE

Front Patio Garden

Ground Floor

Approx. 38.3 sq. metres (411.8 sq. feet)



First Floor

Approx. 22.7 sq. metres (244.4 sq. feet)



Call Dorking - 01306 883399 ■ cubittandwest.co.uk

- Legal advice should be taken to verify fixtures/fittings, planning, alterations and/or lease details
- Appliances & services are untested, dimensions are approximate and floor plans are not to scale
- Through a Homewise Home For Life Plan people aged 60+ can secure this property for up to 59% less, by purchasing a Lifetime Lease.



20511255/20240928/CFE/JG