



**Price**

**£250,000**

**Leasehold**

2x  1x  1x 

**Rough Rew, Dorking,  
Surrey, RH4**

**OVER 60?**

Secure this property  
for up to **59% less!**

**cubitt&west**  
Helping you move forwards



## Main features

- Hive controlled heating and underfloor heating in the bathroom
- Close to Dorking High Street, schools and stations
- Ample Communal Parking
- Communal gardens with allocated shed
- Both bedrooms are doubles, 1 with built-in wardrobes

## Accommodation

### FIRST FLOOR

Entrance Hall

Lounge/Dining Room: 12'7 x 8'5  
(3.84m x 2.57m)

Kitchen: 10'9 x 6'9 (3.28m x 2.06m)

Bedroom 1: 12'9 x 11'7 (3.89m x 3.53m)

Bedroom 2: 13'2 x 8'11 (4.02m x 2.72m)

Bathroom

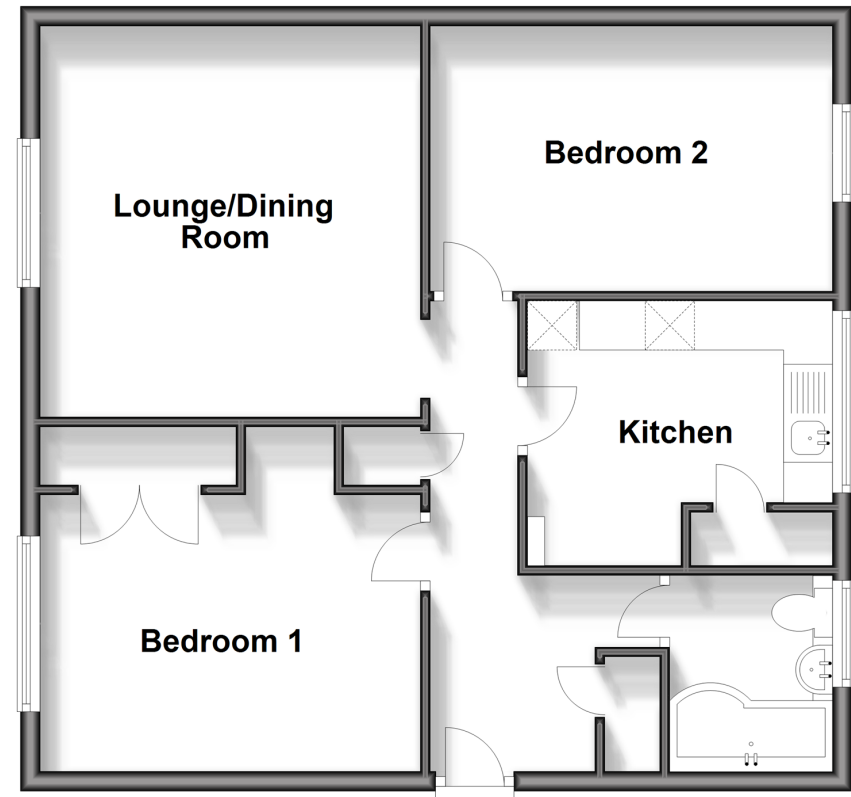
### OUTSIDE

Communal Garden

Allocated Storage Shed

## First Floor

Approx. 61.5 sq. metres (662.3 sq. feet)



**Call Dorking - 01306 883399 ■ [cubittandwest.co.uk](http://cubittandwest.co.uk)**

- Legal advice should be taken to verify fixtures/fittings, planning, alterations and/or lease details
- Appliances & services are untested, dimensions are approximate and floor plans are not to scale
- Through a Homewise Home For Life Plan people aged 60+ can secure this property for up to 59% less, by purchasing a Lifetime Lease.



20509647/20241231/CFE/JL