



Price
£450,000

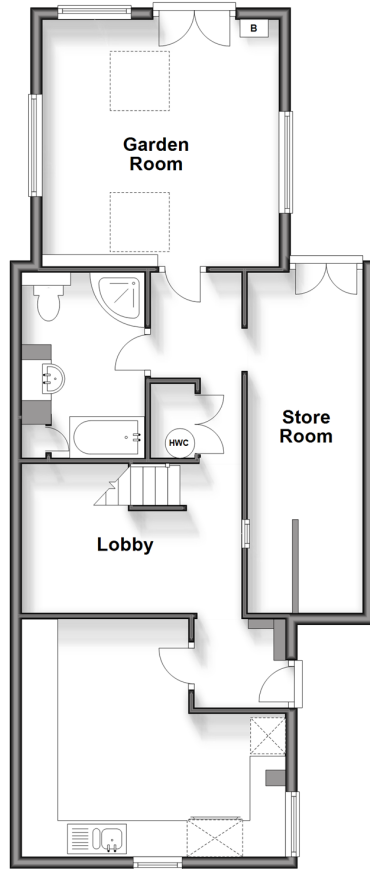
Freehold

4x  2x  3x 

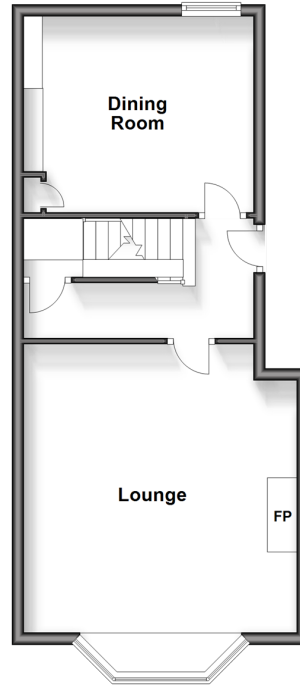
**Horsham Road, Mid
South Holmwood,
Dorking, Surrey, RH5**

cubitt&west
Helping you move forwards

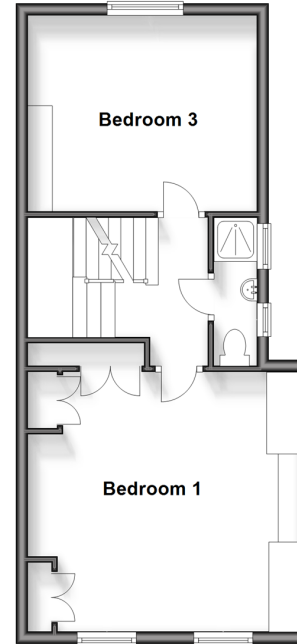
Ground Floor
Approx. 68.6 sq. metres (738.0 sq. feet)



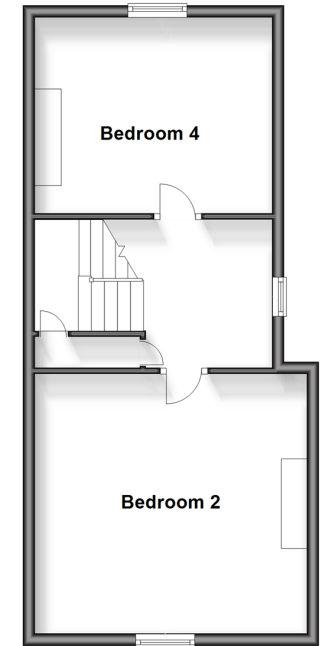
First Floor
Approx. 43.9 sq. metres (472.5 sq. feet)



Second Floor
Approx. 43.5 sq. metres (468.3 sq. feet)



Third Floor
Approx. 44.4 sq. metres (477.4 sq. feet)



Accommodation

GROUND FLOOR

Lobby: 14'7 x 8'2 (4.45m x 2.49m)
Kitchen: 14'7 x 13'1 (4.45m x 3.99m)
Garden Room: 13'2 x 13'1 (4.02m x 3.99m)
Store Room
Bathroom

FIRST FLOOR

Entrance Hall
Lounge: 15'11 x 15'3 (4.85m x 4.65m)
Dining Room: 12'8 x 10'8 (3.86m x 3.25m)

SECOND FLOOR

Landing

Bedroom 1: 15'3 x 13'11 (4.65m x 4.24m)

Bedroom 3: 12'8 x 10'8 (3.86m x 3.25m)

Shower Room

THIRD FLOOR

Landing

Bedroom 2: 15'4 x 13'11 (4.68m x 4.24m)

Bedroom 4: 12'6 x 10'9 (3.81m x 3.28m)

OUTSIDE

Driveway Parking
Rear Garden



Main features

- Imposing Victorian villa over 4 floors
- Ample scope to update and improve
- Flexible living accommodation ideal for a growing family
- Countryside walks and cycle trails on your doorstep
- Easy access to Dorking with its High Street, stations and schools



Nearest Schools

Primary Schools: The Weald CofE Voluntary Aided Primary 1.2 miles, St John's CE Community Primary 1.7 miles, Newdigate CofE Primary 2.3 miles
Secondary Schools: The Priory CofE Voluntary Aided School 2.5 miles, The Ashcombe School 3.2 miles,



Transport Information

Train Stations: Holmwood 0.8 miles, Ockley 2.9 miles, Dorking West 3.0 miles



Address

Horsham Road, Mid South Holmwood, Dorking, Surrey, RH5



Directions

For directions to this property please contact us.



cubitt&west
Helping you move forwards

Call Dorking Branch 01306 883399 ■ cubittandwest.co.uk



■ Legal advice should be taken to verify fixtures/fittings, planning, alterations and/or lease details ■ Appliances & services are untested, dimensions are approximate and floor plans are not to scale



EPC RATING



20511334/20250517/CFE/OK