



OVER 60?

Secure this property
for up to **59% less!**

Price

£425,000

Freehold

3x  1x  1x 

**Holmesdale Road, North
Holmwood, Dorking,
Surrey, RH5**

cubitt&west
Helping you move forwards



Main features

- Light, bright and airy yet full of character and charm
- Modern kitchen and bathroom
- Sought after village location with countryside walks and National Trust land on your doorstep
- Easy access to Dorking with its high street, stations and schools
- Sunny garden with summer house

Accommodation

GROUND FLOOR

Entrance Hall

Lounge : 13'8 x 10'3 max (4.17m x 3.13m)

Dining Area: 11'5 x 10'2 (3.48m x 3.10m)

Kitchen: 10'5 x 7'7 (3.18m x 2.31m)

FIRST FLOOR

Landing

Bedroom 1: 11'1 max x 10'11 up to fitted wardrobes (3.38m x 3.33m)

Bedroom 2: 10'7 x 7'8 (3.23m x 2.34m)

Bedroom 3: 7'8 x 6'1 (2.34m x 1.86m)

Bathroom

OUTSIDE

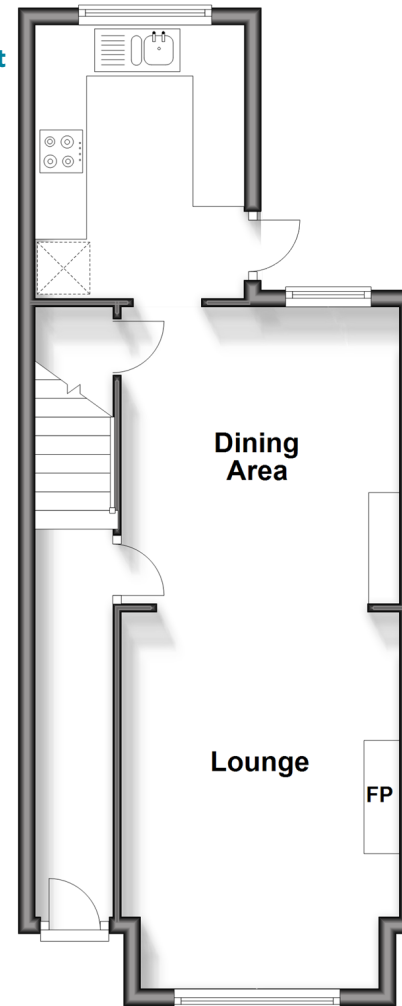
Front Garden

Rear Garden

Summer House

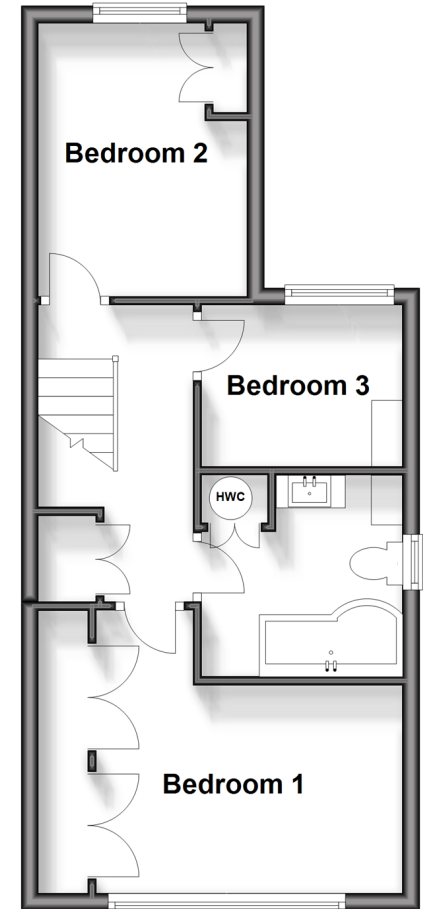
Ground Floor

Approx. 439.3 sq. feet



First Floor

Approx. 402.5 sq. feet



Call Dorking - 01306 883399 ■ cubittandwest.co.uk

- Legal advice should be taken to verify fixtures/fittings, planning, alterations and/or lease details
- Appliances & services are untested, dimensions are approximate and floor plans are not to scale
- Through a Homewise Home For Life Plan people aged 60+ can secure this property for up to 59% less, by purchasing a Lifetime Lease.



20510690/20250112/CFE/JG