



Price
£311,100

Leasehold

2x  1x  1x 

**Tower Hill Rise,
Gomshall, Guildford,
Surrey, GU5**

cubitt & west
Helping you move forwards



Main features

- Available for shared ownership at a 61% share
- Sought after village in The Surrey Hills, in a quiet cul-de-sac
- Both bedrooms are doubles
- Carport (with doors) and parking in front

Accommodation

GROUND FLOOR

Entrance Hall
 Lounge: 17'0 max x 15'11 max (5.19m x 4.85m)
 Kitchen: 14'10 x 6'10 (4.52m x 2.08m)
 Garden Room: 20'11 x 10'0 (6.38m x 3.05m)

FIRST FLOOR

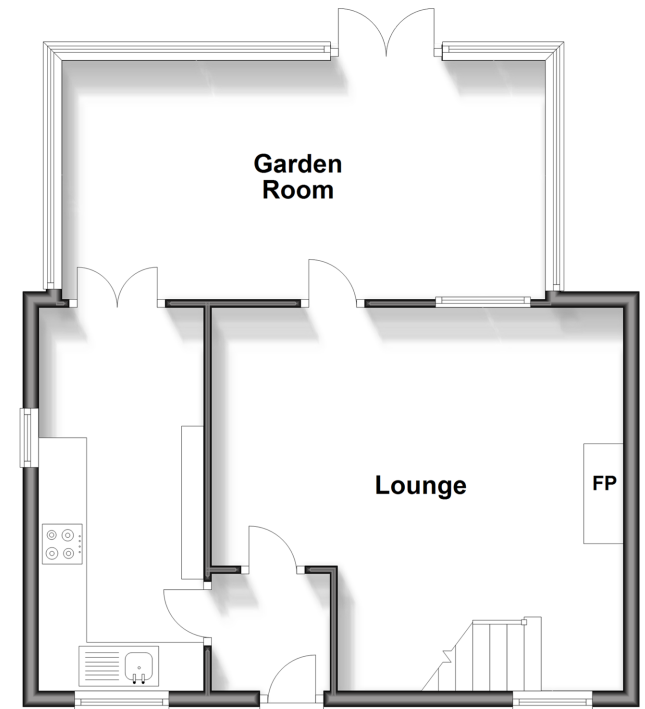
Landing
 Bedroom 1: 15'10 x 9'0 up to wardrobes (4.83m x 2.75m)
 Bedroom 2: 13'4 x 10'0 max (4.07m x 3.05m)
 Bathroom

OUTSIDE

Front Garden
 Car Port with doors
 Off Road Parking
 Rear Garden
 Potting Shed with Electrics

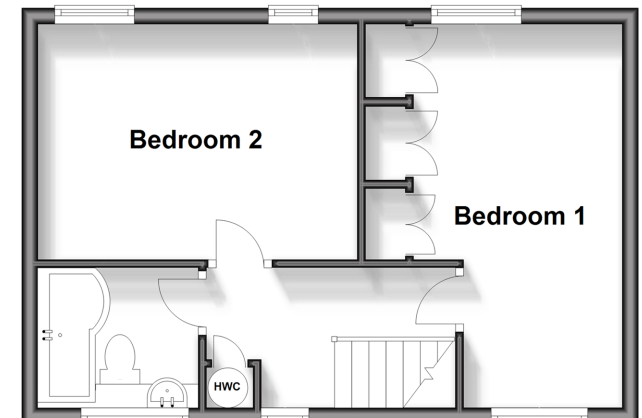
Ground Floor

Approx. 54.0 sq. metres (581.1 sq. feet)



First Floor

Approx. 35.5 sq. metres (382.0 sq. feet)



Call Dorking - 01306 883399 ■ cubittandwest.co.uk

- Legal advice should be taken to verify fixtures/fittings, planning, alterations and/or lease details
- Appliances & services are untested, dimensions are approximate and floor plans are not to scale



20511367 / 20240729 / MIC / JG