



**Price**  
**£375,000**

**Freehold**

3x  1x  2x 

**Dower Walk, Gossops  
Green, Crawley, West  
Sussex, RH11**

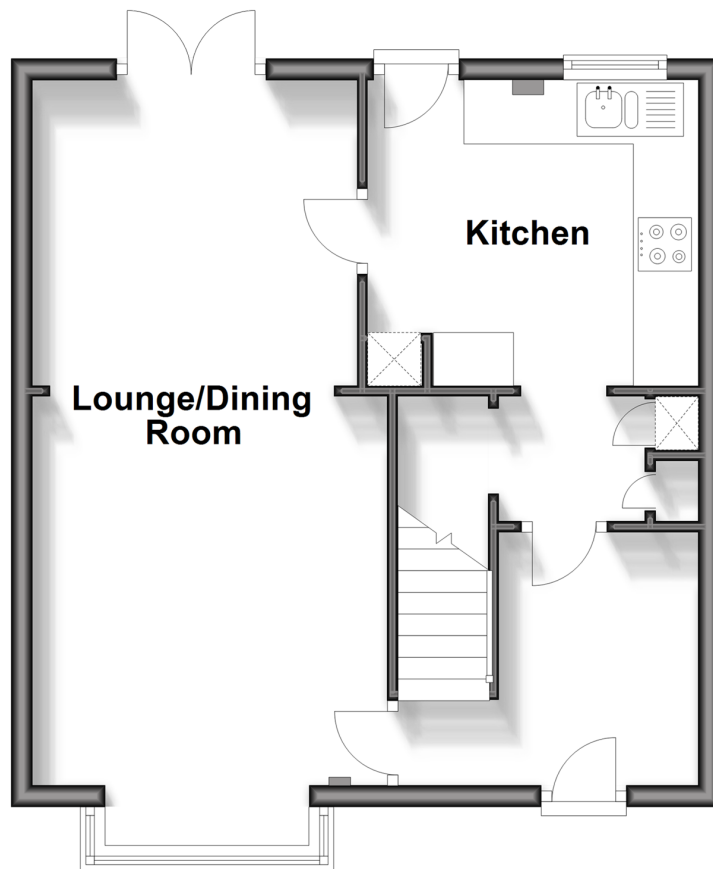
**OVER 60?**

Secure this property  
for up to **59% less!**

**cubitt & west**  
Helping you move forwards

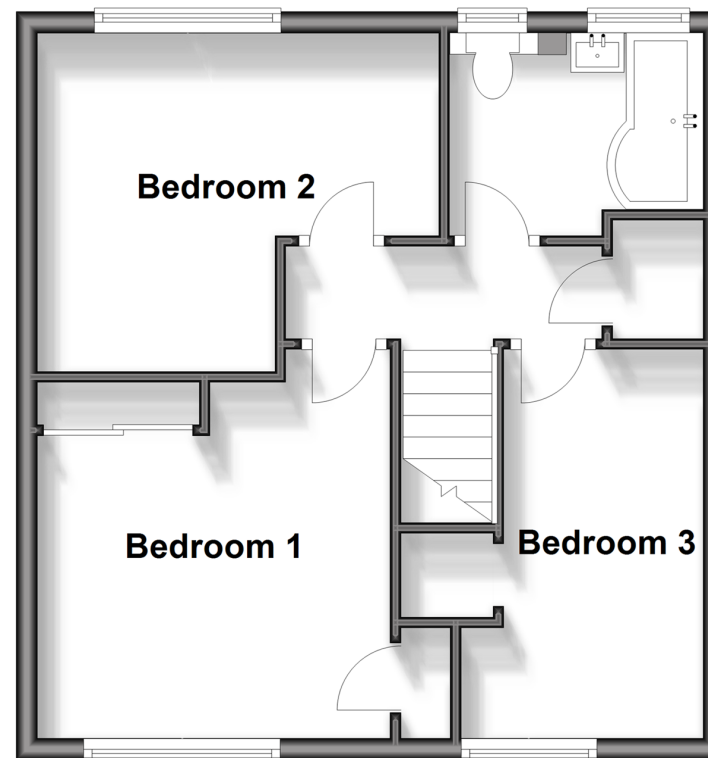
## Ground Floor

Approx. 42.0 sq. metres (451.7 sq. feet)



## First Floor

Approx. 41.4 sq. metres (445.4 sq. feet)



## Accommodation

### GROUND FLOOR

Entrance Hall

Lounge/Diner: 21'5 (6.53m) x 11'0 (3.36m) narrowing to 9'11 (3.02m)

Breakfast Area: 7'9 x 6'3 (2.36m x 1.91m)

Kitchen: 13'5 (4.09m) narrowing to 9'1 (2.77m) x 10'2 (3.10m)

### FIRST FLOOR

Landing

Bedroom 1: 11'0 x 11'0 (3.36m x 3.36m)

Bedroom 2: 12'6 x 10'2 (3.81m x 3.10m) narrowing to 7'11 x 6'0 (2.41m x 1.83m)

Bedroom 3: 11'10 (3.61m) x 7'3 (2.21m) narrowing to 5'11 (1.80m)

Bathroom : 7'7 x 5'11 (2.31m x 1.80m)

### OUTSIDE

Front Garden

Rear Garden





## Main features

- Updated and improved end of terraced home
- Large lounge/diner and separate breakfast area
- Double glazed windows and radiator heating
- Luxury re-fitted kitchen with integrated appliances and re-fitted bathroom suite
- Just a short walk to local shops,schools and Ifield Railway station

### Nearest Schools

Primary Schools: Gossops Green Primary 0.2 miles, Mill Primary, The 0.3 miles, Waterfield Primary 0.6 miles

Secondary Schools: St Wilfrid's Catholic Comprehensive School, Crawley 0.3 miles, Holy Trinity CofE Secondary

### Transport Information

Train Stations: Ifield 0.3 miles, Crawley 1.1 miles, Three Bridges 2.2 miles

### Address

Dower Walk, Gossops Green, Crawley, West Sussex, RH11

### Directions

For directions to this property please contact us.





**cubitt&west**  
Helping you move forwards

Call Crawley Branch 01293 522233 ■ [cubittandwest.co.uk](http://cubittandwest.co.uk)



- Legal advice should be taken to verify fixtures/fittings, planning, alterations and/or lease details
- Appliances & services are untested, dimensions are approximate and floor plans are not to scale
- Through a Homewise Home For Life Plan people aged 60+ can secure this property for up to 59% less, by purchasing a Lifetime Lease.

EPC RATING

CURRENT: C(71) POTENTIAL: B(85)

20420009/20241127/SS/DC