



**Price**

**£290,000**

**Freehold**

3x  1x  1x 

**Petworth Court,  
Cowfold Close,  
Bewbush, Crawley, West  
Sussex, RH11**

**OVER 60?**

You could get up to  
**59% off** the price!\*

**cubitt&west**  
Helping you move forwards





## Main features

- Updated and improved family home in a quiet cul-de-sac
- Refitted kitchen and shower room
- Double glazing and radiator heating
- Well presented throughout
- Large rear garden and front garden

## Accommodation

### GROUND FLOOR

#### Entrance Hall

**Kitchen:** 11'5 x 9'10 (3.48m x 3.00m)

**Lounge/Dining Room:** 16'6 at widest point (5.03m) narrowing to 13'6 at narrowest point (4.12m) x 14'4 (4.37m)

#### Cloakroom

#### Rear Lobby

### FIRST FLOOR

#### Landing

**Bedroom 1:** 14'10 at widest point (4.52m) narrowing to 11'9 at narrowest point (3.58m) x 8'10 (2.69m)

**Bedroom 2:** 11'9 x 11'7 (3.58m x 3.53m)

**Bedroom 3:** 8'9 x 8'8 (2.67m x 2.64m)

#### Shower Room

### OUTSIDE

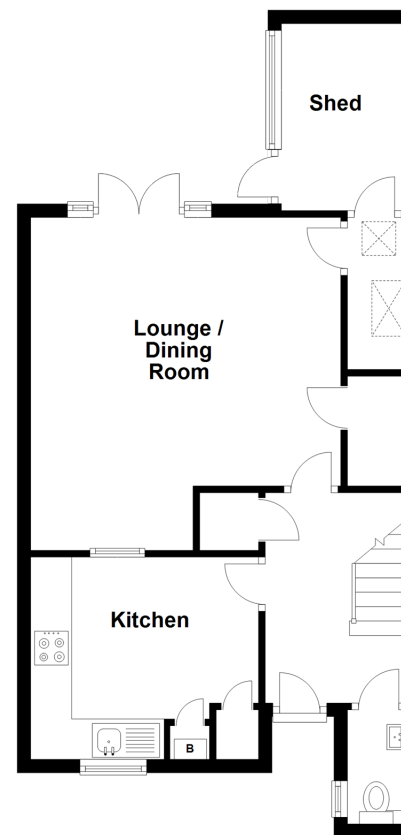
#### Front Garden

#### Rear Garden

#### Shed

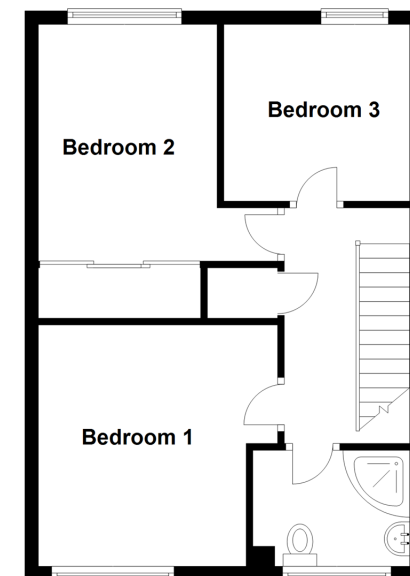
### Ground Floor

Approx. 49.6 sq. metres (533.6 sq. feet)



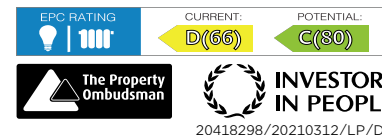
### First Floor

Approx. 44.2 sq. metres (475.2 sq. feet)



**Call Crawley - 01293 522233 ■ [cubittandwest.co.uk](http://cubittandwest.co.uk)**

- Legal advice should be taken to verify fixtures/fittings, planning, alterations and/or lease details
- Appliances & services are untested, dimensions are approximate and floor plans are not to scale
- Our Homewise partnership offer a 'Home for Life' plan to buyers over 60, granting a lifetime lease for your protection and reducing the purchase price by up to 59%



20418298/20210312/LP/DC