



Price

£475,000

Freehold

3x  1x  3x 

**Crossways, Three
Bridges, Crawley, West
Sussex, RH10**

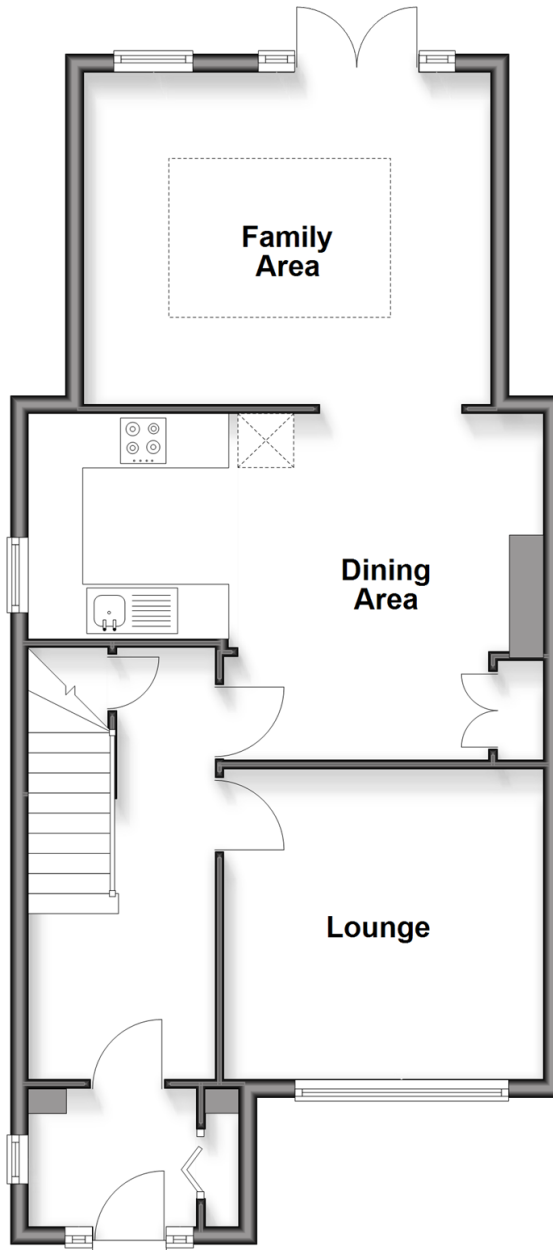
OVER 60?

Secure this property
for up to **59% less!**

cubitt&west
Helping you move forwards

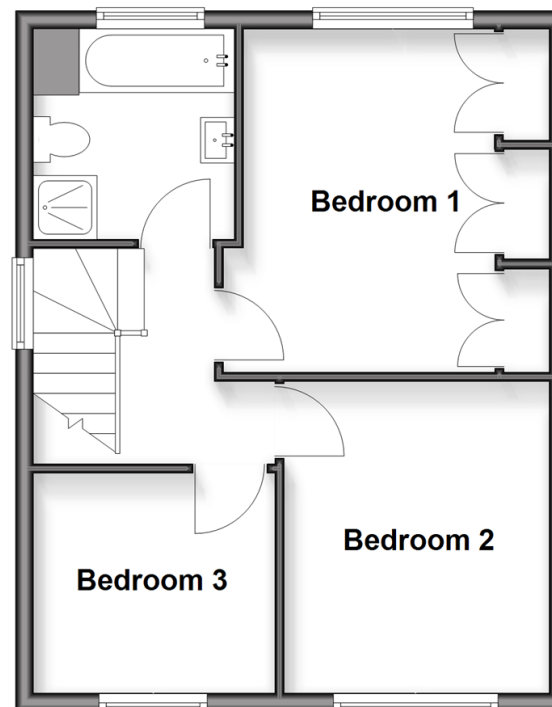
Ground Floor

Approx. 61.9 sq. metres (666.4 sq. feet)



First Floor

Approx. 41.4 sq. metres (445.1 sq. feet)



Accommodation

GROUND FLOOR

Entrance Hall

Dining Area: 17'5 x 12'4 (5.31m x 3.76m)

Lounge: 11'5 x 11'1 (3.48m x 3.38m)

Family Area: 14'8 x 11'9 (4.47m x 3.58m)

FIRST FLOOR

Landing

Bedroom 1: 12'5 x 9'6 (3.79m x 2.90m)

Bedroom 2: 11'2 x 9'7 (3.41m x 2.92m)

Bedroom 3: 8'6 x 8'0 (2.59m x 2.44m)

Bathroom: 7'8 x 7'1 (2.34m x 2.16m)

OUTSIDE

Front Garden

Rear Garden

Driveway



Main features

- Beautifully presented semi detached house
- Driveway
- Single story rear extension, cinema room
- Hive heating control and smart lighting fitted in four rooms
- Close to local amenities, schools, shops, train line links



Nearest Schools

Primary Schools: Three Bridges Junior School 0.2 miles, Northgate Primary 0.4 miles, Pound Hill Junior School, Crawley 0.8 miles

Secondary Schools: Hazelwick School 0.4 miles



Transport Information

Train Stations: Three Bridges 0.5 miles, Crawley 0.8 miles, Ifield 1.8 miles



Address

Crossways, Three Bridges, Crawley, West Sussex, RH10



Directions

For directions to this property please contact us.



cubitt&west
Helping you move forwards

Call Crawley Branch 01293 522233 ■ cubittandwest.co.uk



- Legal advice should be taken to verify fixtures/fittings, planning, alterations and/or lease details
- Through a Homewise Home For Life Plan people aged 60+ can secure this property for up to 50% less, by purchasing a Lifetime Lease
- Appliances & services are untested, dimensions are approximate and floor plans are not to scale



20420574/20251112/SS/DC