



**OVER 60?**

Secure this property  
for up to **59% less!**

**Price**

**£365,000**

**Freehold**

2x  2x  1x 

**Riverside Walk, Pound  
Hill, Crawley, West  
Sussex, RH10**

**cubitt&west**  
Helping you move forwards





## Main features

- Modern house situated in Forge Wood sold with no chain
- Two parking spaces
- Downstairs cloakroom, en suite family bathroom
- Tucked away in a quiet spot with access to great walks
- Nearby Three Bridges train station, transport links and Gatwick

## Accommodation

### GROUND FLOOR

Entrance Hall

Downstairs Cloakroom

Kitchen/Breakfast Room: 13'7 x 8'4 (4.14m x 2.54m)

Lounge: 15'1 x 12'10 (4.60m x 3.91m)

### FIRST FLOOR

Landing

Bedroom 1: 17'4 x 8'10 (5.29m x 2.69m)

En Suite Shower Room

Bedroom 2: 9'0 x 8'2 (2.75m x 2.49m)

Bathroom

### OUTSIDE

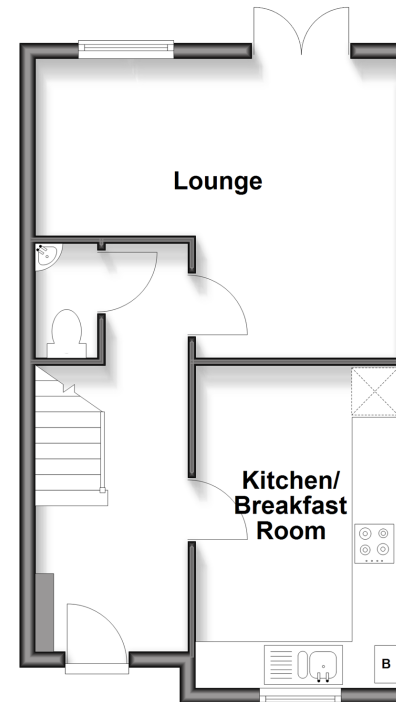
Front Garden

Rear Garden

Two allocated Parking Spaces

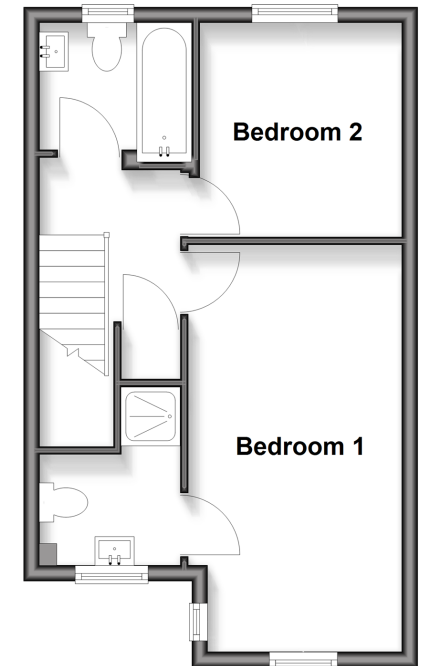
### Ground Floor

Approx. 36.3 sq. metres (391.0 sq. feet)



### First Floor

Approx. 34.9 sq. metres (375.6 sq. feet)



**Call Crawley - 01293 522233 ■ [cubittandwest.co.uk](http://cubittandwest.co.uk)**

- Legal advice should be taken to verify fixtures/fittings, planning, alterations and/or lease details
- Appliances & services are untested, dimensions are approximate and floor plans are not to scale
- Through a Homewise Home For Life Plan people aged 60+ can secure this property for up to 50% less, by purchasing a Lifetime Lease



20416638/20251204/SS/NH1