



**Guide Price**  
**£475,000**

**Freehold**

4x  2x  1x 

**Cornwell Avenue, Forge  
Wood, Forge Wood,  
Crawley, West Sussex,  
RH10**

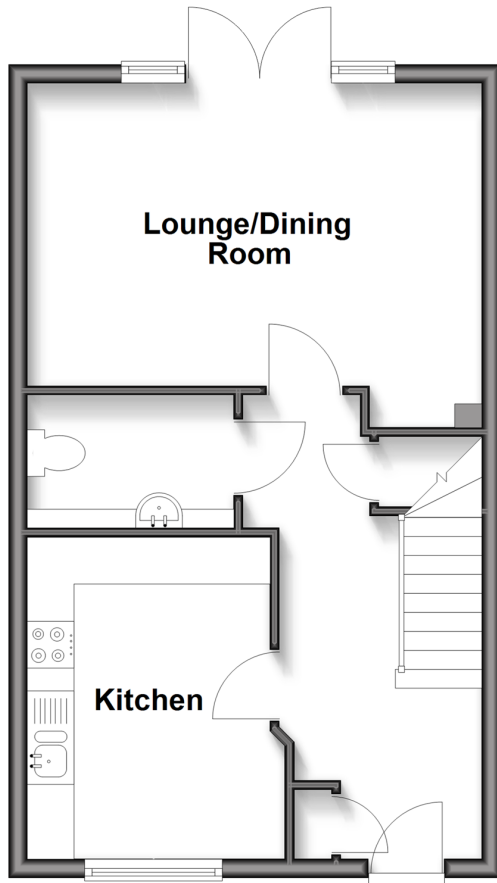
**OVER 60?**

Secure this property  
for up to **59% less!**

**cubitt&west**  
Helping you move forwards

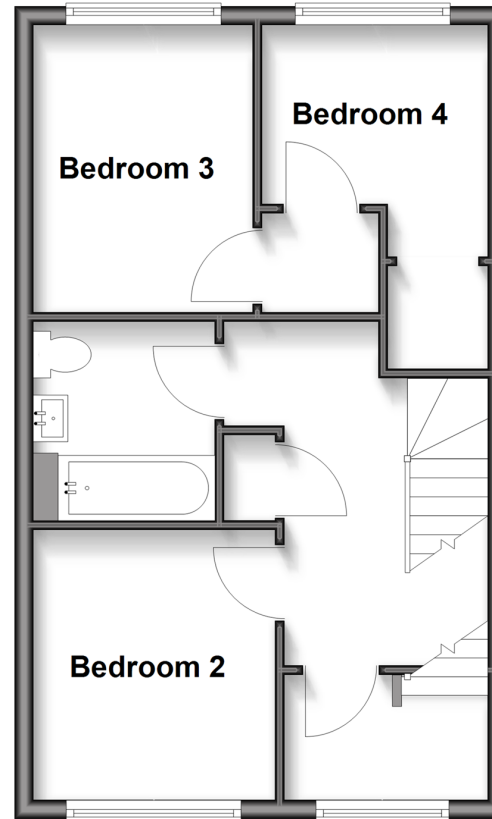
## Ground Floor

Approx. 40.4 sq. metres (435.1 sq. feet)



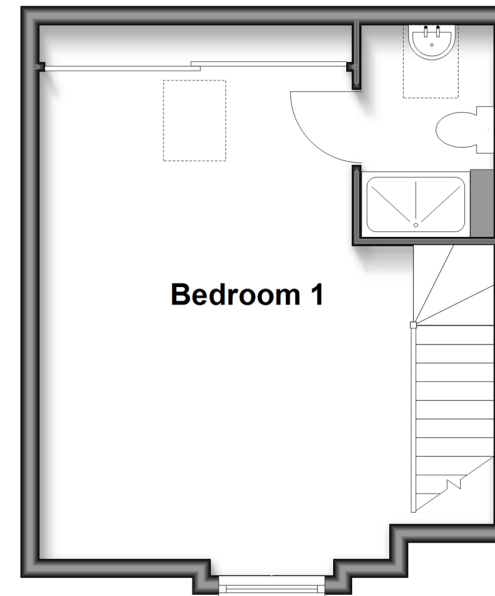
## First Floor

Approx. 40.5 sq. metres (436.2 sq. feet)



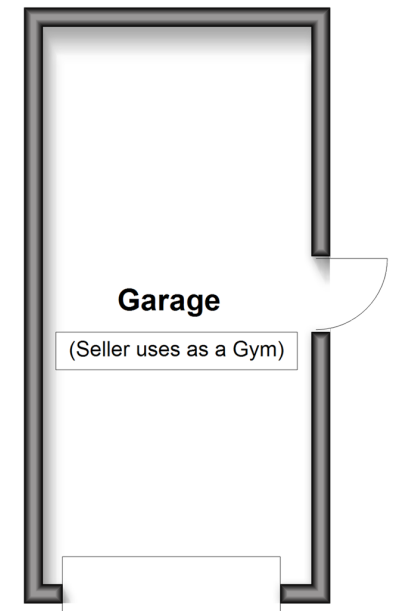
## Second Floor

Approx. 27.7 sq. metres (297.9 sq. feet)



## Outbuilding

Approx. 17.2 sq. metres (185.0 sq. feet)



## Accommodation

### GROUND FLOOR

Entrance Hall  
Downstairs Cloakroom  
Kitchen: 11'3 x 8'5 (3.43m x 2.57m)  
Lounge/Dining Room: 15'9 x 11'2 (4.80m x 3.41m)

### FIRST FLOOR

Landing  
Bedroom 2: 10'0 x 7'8 (3.05m x 2.34m)  
Bedroom 3: 9'6 x 8'0 (2.90m x 2.44m)  
Bedroom 4: 7'8 x 6'3 (2.34m x 1.91m)  
Bathroom

### SECOND FLOOR

Landing  
Bedroom 1: 16'5 x 10'9 (5.01m x 3.28m)  
En Suite

### OUTSIDE

Front Garden  
Rear Garden  
Garage  
Driveway





## Main features

- Stylish semi detached home sold with no chain
- Garage and driveway for two cars
- Large downstairs cloakroom with additional storage
- Updated landscaped sunny garden with pergola and access to garage with additional shed
- Bedrooms adapted to create extra space for growing family



### Nearest Schools

Primary Schools: Milton Mount Primary 0.8 miles, Pound Hill Junior School, Crawley 1.3 miles, Northgate Primary 1.5 miles

Secondary Schools: Hazelwick School 0.9 miles,



### Transport Information

Train Stations: Gatwick Airport 1.2 miles, Three Bridges 1.3 miles, Crawley 2.1 miles



### Address

Cornwell Avenue, Forge Wood, Forge Wood, Crawley, West Sussex, RH10



### Directions

For directions to this property please contact us.





**cubitt&west**  
Helping you move forwards

Call Crawley Branch 01293 522233 ■ [cubittandwest.co.uk](https://www.cubittandwest.co.uk)



■ Legal advice should be taken to verify fixtures/fittings, planning, alterations and/or lease details ■ Appliances & services are untested, dimensions are approximate and floor plans are not to scale  
■ Through a Homewise Home For Life Plan people aged 60+ can secure this property for up to 50% less, by purchasing a Lifetime Lease.



20420244/20250920/DC/NH1