



Price
£400,000

Freehold

3x  2x  2x 

**Worth Road, Pound Hill,
Crawley, West Sussex,
RH10**

OVER 60?

Secure this property
for up to **59% less!**

cubitt & west
Helping you move forwards

Accommodation

GROUND FLOOR

Entrance Porch

Entrance Hall

Lounge: 22'3 (6.79m) x 11'5 (3.48m)
narrowing to 9'6 (2.90m)

Family Room : 21'1 x 10'5 (6.43m x 3.18m)

Kitchen : 10'3 x 8'6 (3.13m x 2.59m)

Shower Room : 6'8 x 4'1 (2.03m x 1.25m)

FIRST FLOOR

Landing

Bedroom 1 : 12'5 (3.79m) x 11'0 (3.36m)
narrowing to 9'0 (2.75m)

Bedroom 2: 11'1 x 9'11 (3.38m x 3.02m)

Bedroom 3 : 9'0 x 6'10 (2.75m x 2.08m)

Bathroom : 7'2 x 5'5 (2.19m x 1.65m)

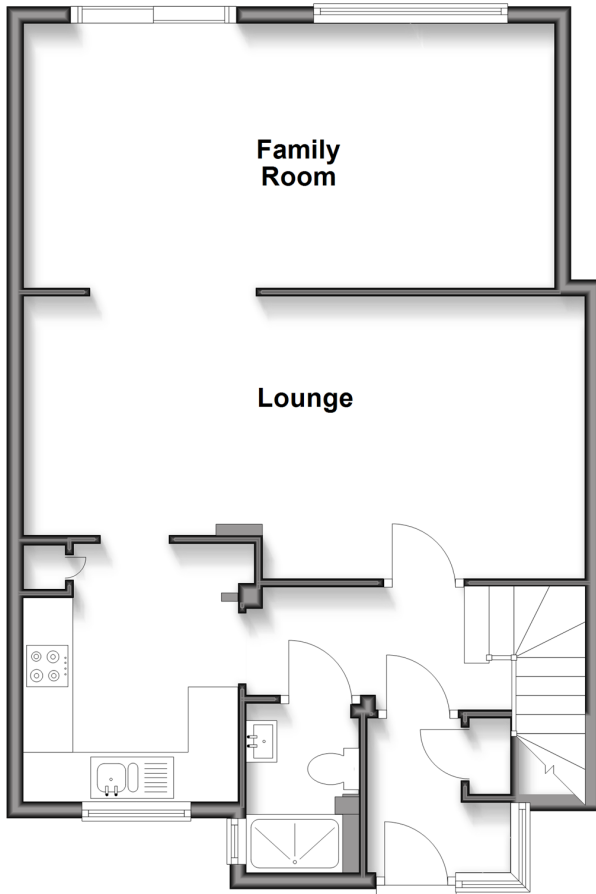
OUTSIDE

Front Garden

Rear Garden

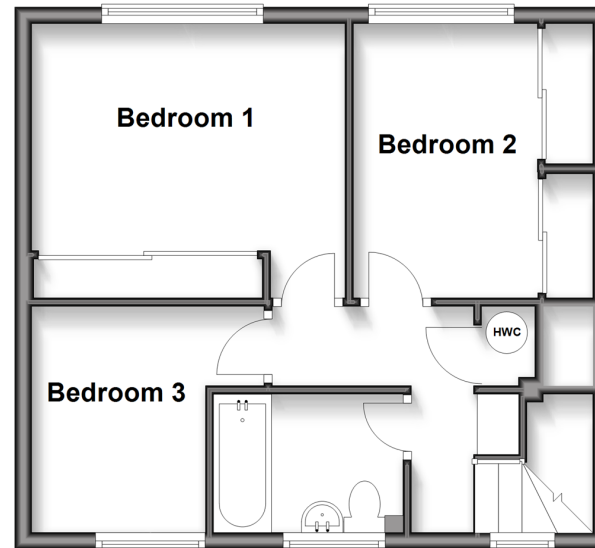
Ground Floor

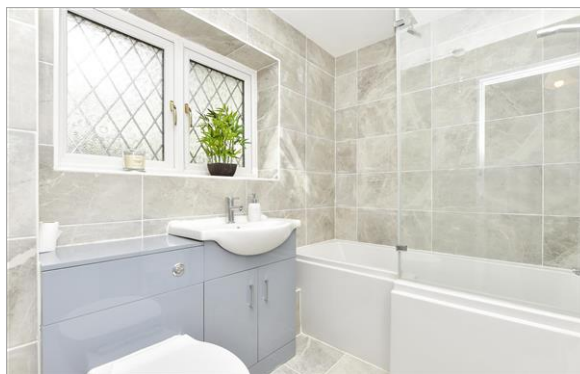
Approx. 64.3 sq. metres (692.0 sq. feet)



First Floor

Approx. 41.5 sq. metres (446.2 sq. feet)





Main features

- No upper chain
- Extended and improved terraced house
- Re-fitted kitchen, bathroom and ground floor shower room
- Short walk to local shops, schools and Three Bridges railway station
- Views to the front over an open green and a good size rear garden

Nearest Schools

Primary Schools: Pound Hill Junior School, Crawley 0.1 miles, Maidenbower Junior School 0.6 miles, Milton Mount Primary 0.6 miles

Secondary Schools: Oriel High School 0.8 miles

Transport Information

Train Stations: Three Bridges 0.3 miles, Crawley 1.4 miles, Ifield 2.7 miles

Address

Worth Road, Pound Hill, Crawley, West Sussex, RH10

Directions

For directions to this property please contact us.



cubitt&west
Helping you move forwards

Call Crawley Branch 01293 522233 ■ [cubittandwest.co.uk](https://www.cubittandwest.co.uk)



- Legal advice should be taken to verify fixtures/fittings, planning, alterations and/or lease details
- Appliances & services are untested, dimensions are approximate and floor plans are not to scale
- Through a Homewise Home For Life Plan people aged 60+ can secure this property for up to 59% less, by purchasing a Lifetime Lease.



20420299/20250503/SS/DC