



OVER 60?

Secure this property
for up to **59% less!**

Price

£310,000

Freehold

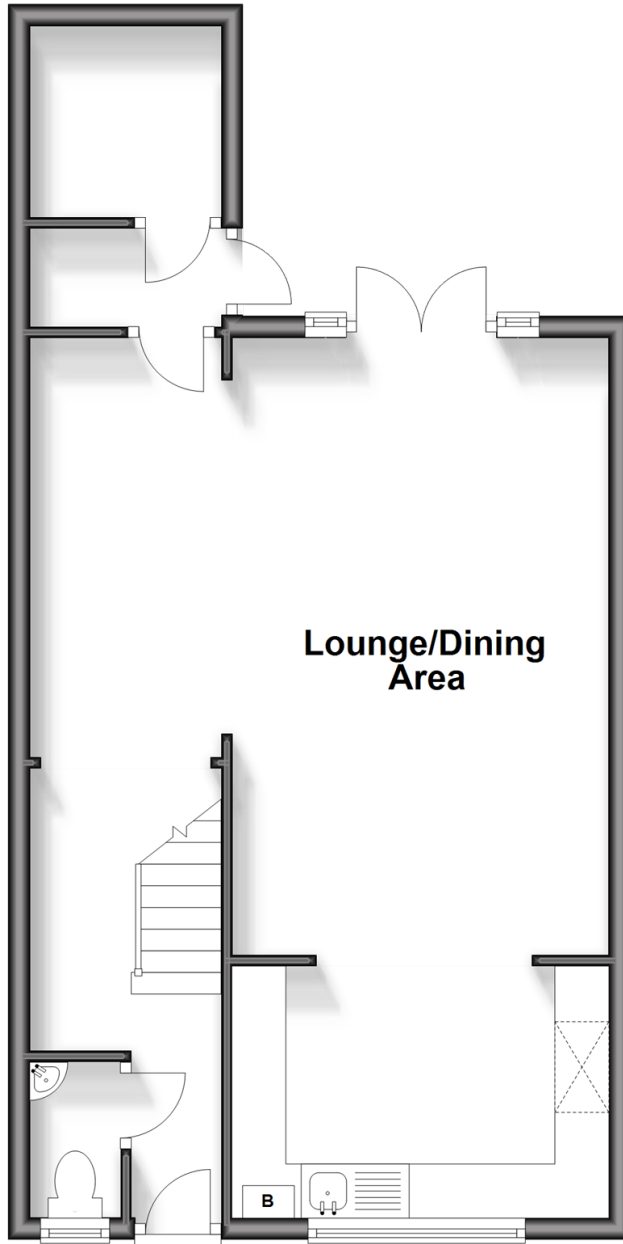
3x  1x  1x 

**Selsey Road, Crawley,
West Sussex, RH11**

cubitt&west
Helping you move forwards

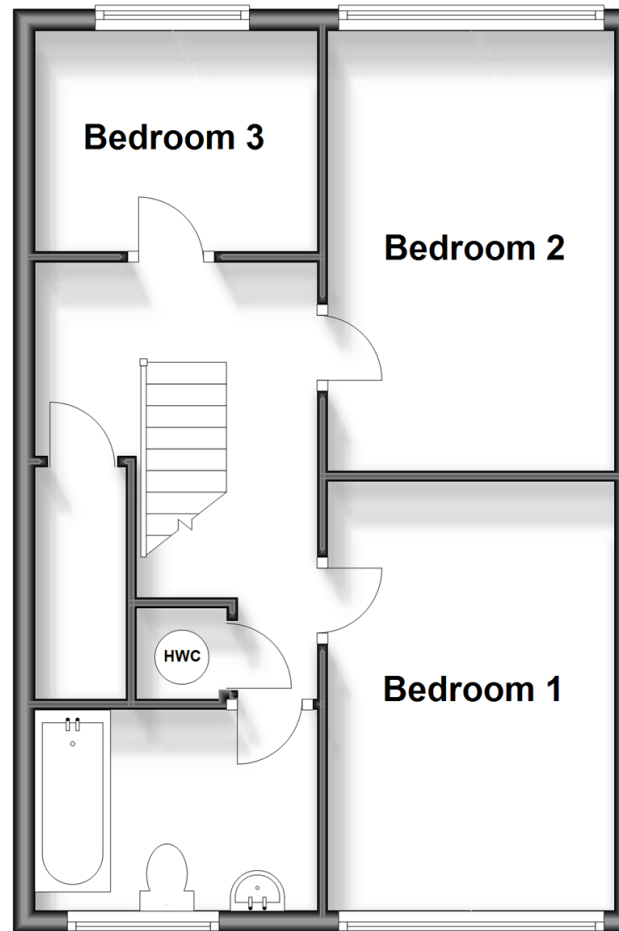
Ground Floor

Approx. 524.7 sq. feet



First Floor

Approx. 469.8 sq. feet



Accommodation

GROUND FLOOR

Entrance Hall

Downstairs Cloakroom

Kitchen: 11'4 x 7'6 (3.46m x 2.29m)

Lounge/Dining Area: 18'10 x 11'1 (5.74m x 3.38m)

Rear Lobby

FIRST FLOOR

Landing

Bedroom 1: 13'2 x 8'7 (4.02m x 2.62m)

Bedroom 2: 13'3 x 8'7 (4.04m x 2.62m)

Bedroom 3: 8'8 x 6'9 (2.64m x 2.06m)

Bathroom: 8'6 x 6'1 (2.59m x 1.86m)

OUTSIDE

Front Garden

Rear Garden

Garage



Main features

- No upper chain
- Garage at the rear
- Quiet walkway facing onto open green
- Large open plan living area with a lounge/diner and re-fitted kitchen area
- Close to local shops, schools and public transport



Nearest Schools

Primary Schools: Seymour Primary 0.5 miles, Southgate Primary 1.1 miles, Broadfield East Junior School 1.2 miles

Secondary Schools: Holy Trinity CofE Secondary School, Crawley 1.1 miles,



Transport Information

Train Stations: Ifield 2.1 miles, Crawley 3.0 miles, Faygate 3.1 miles



Address

Selsey Road, Crawley, West Sussex, RH11



Directions

For directions to this property please contact us.



cubitt&west
Helping you move forwards

Call Crawley Branch 01293 522233 ■ cubittandwest.co.uk



■ Legal advice should be taken to verify fixtures/fittings, planning, alterations and/or lease details ■ Appliances & services are untested, dimensions are approximate and floor plans are not to scale
■ Through a Homewise Home For Life Plan people aged 60+ can secure this property for up to 59% less, by purchasing a Lifetime Lease.



20420031/20250508/SS/DC