



Guide Price
£325,000

Freehold

3x  1x  1x 

**Windrush Close,
Gossops Green, Crawley,
West Sussex, RH11**

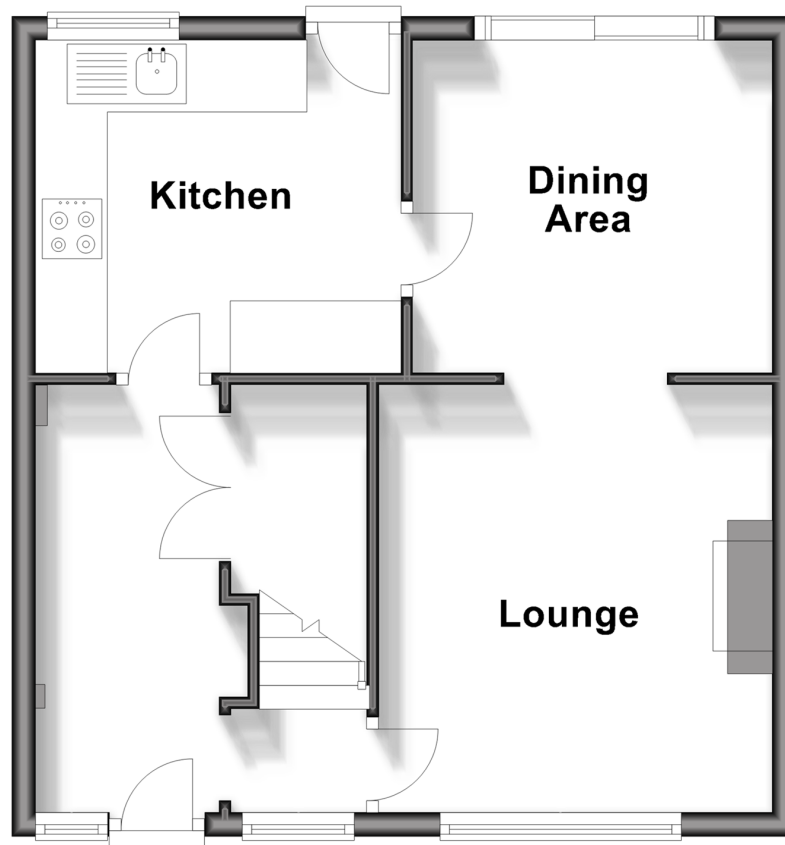
OVER 60?

Secure this property
for up to **59% less!**

cubitt&west
Helping you move forwards

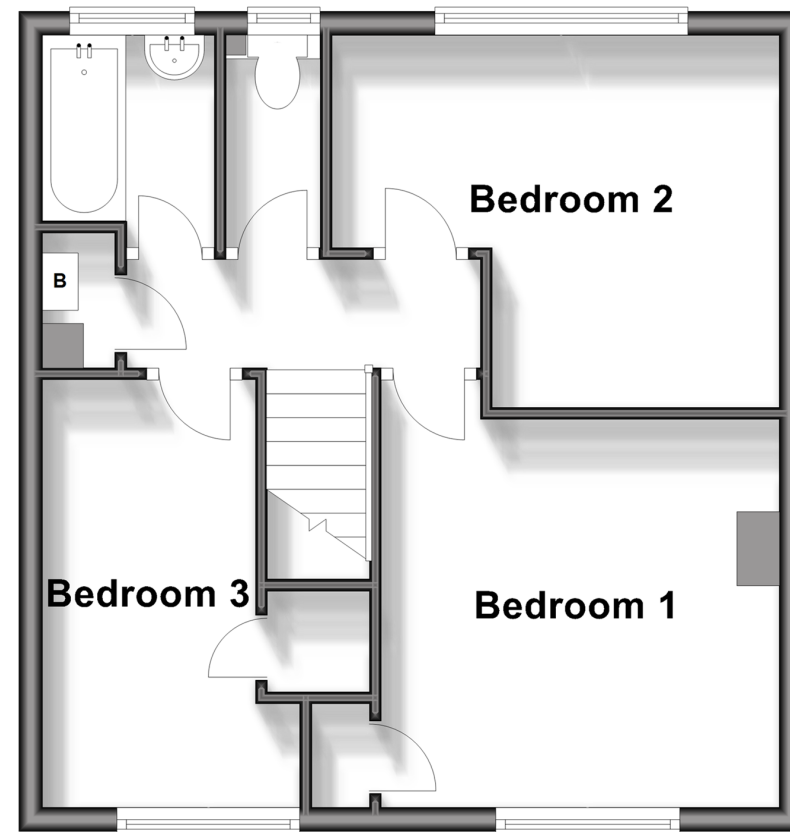
Ground Floor

Approx. 40.4 sq. metres (434.4 sq. feet)



First Floor

Approx. 40.2 sq. metres (433.2 sq. feet)



Accommodation

GROUND FLOOR

Entrance Hall

Storage Area: 11'10 x 4'11 (3.61m x 1.50m)

Lounge: 11'11 x 10'10 (3.63m x 3.30m)

Dining Area: 10'0 x 9'3 (3.05m x 2.82m)

Kitchen: 10'4 x 9'0 (3.15m x 2.75m)

FIRST FLOOR

Landing

Bedroom 1 : 11'1 x 11'0 (3.38m x 3.36m)

Bedroom 2 : 12'6 x 10'3 (3.81m x 3.13m)
narrowing to 7'10 x 5'11 (2.39m x 1.80m)

Bedroom 3 : 11'10 (3.61m) x 7'8 (2.34m)
narrowing to 6'1 (1.86m)

Bathroom: 5'7 x 4'9 (1.70m x 1.45m)

Separate Toilet

OUTSIDE

Front Garden

Rear Garden



Main features

- Mid terraced house in a quiet cul de sac
- No upper chain
- Good size rear garden
- Re-fitted kitchen and bathroom with a separate WC
- Short walk to Ifield train station, local shops and schools



Nearest Schools

Primary Schools: Gossops Green Primary 0.1 miles, Waterfield Primary 0.2 miles, Bewbush Community Primary 0.3 miles

Secondary Schools: Holy Trinity CofE Secondary School,



Transport Information

Train Stations: Ifield 0.5 miles, Crawley 1.4 miles, Faygate 2.0 miles



Address

Windrush Close, Gossops Green, Crawley, West Sussex, RH11



Directions

For directions to this property please contact us.



cubitt&west
Helping you move forwards

Call Crawley Branch 01293 522233 ■ cubittandwest.co.uk



■ Legal advice should be taken to verify fixtures/fittings, planning, alterations and/or lease details ■ Appliances & services are untested, dimensions are approximate and floor plans are not to scale
■ Through a Homewise Home For Life Plan people aged 60+ can secure this property for up to 59% less, by purchasing a Lifetime Lease.



20418297/20250512/CG/DC