



**Price**  
**£400,000**

**Freehold**

3x  2x  2x 

**Barrington Road,  
Crawley, West Sussex,  
RH10**

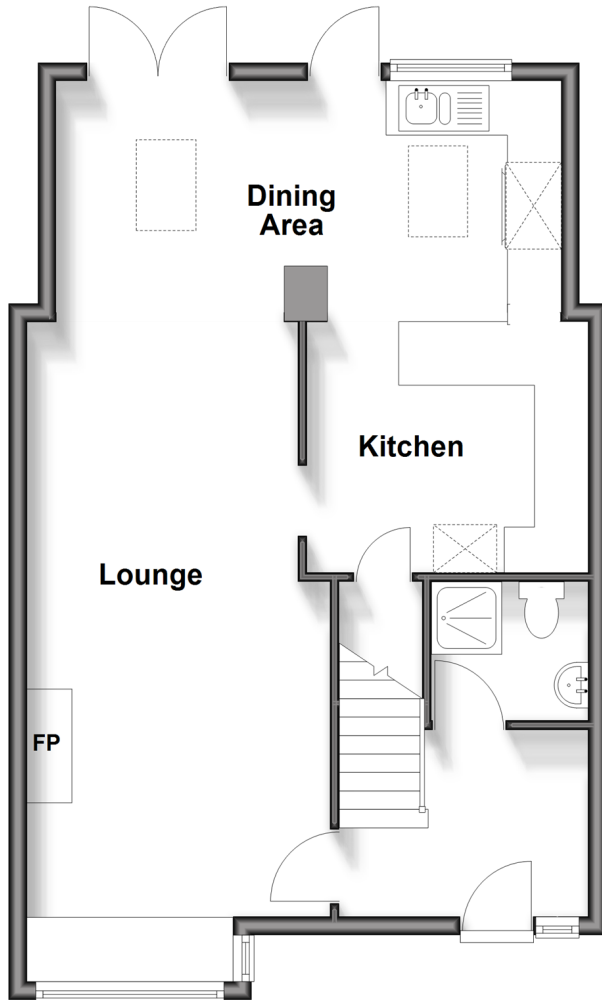
**OVER 60?**

Secure this property  
for up to **59% less!**

**cubitt&west**  
Helping you move forwards

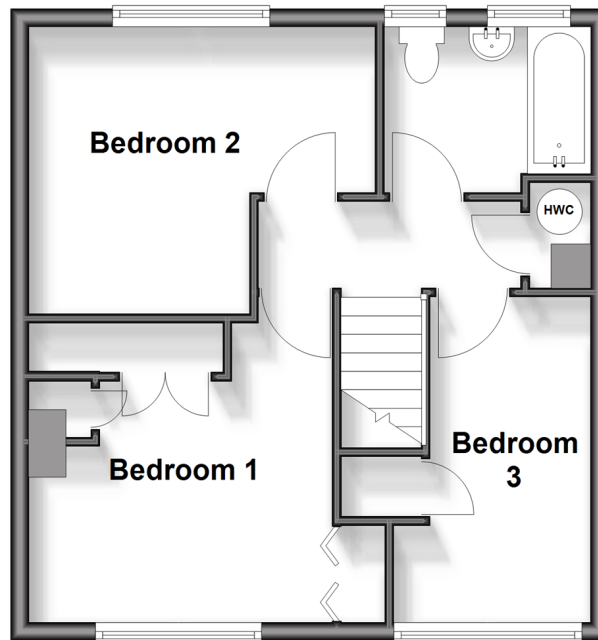
## Ground Floor

Approx. 57.2 sq. metres (615.3 sq. feet)



## First Floor

Approx. 40.7 sq. metres (438.1 sq. feet)



## Accommodation

### GROUND FLOOR

Entrance Hall

Shower Room: 6'0 x 5'0 (1.83m x 1.53m)

Lounge: 21'6 (6.56m) x 10'11 (3.33m)  
narrowing to 9'10 (3.00m)

Kitchen: 17'8 x 10'2 (5.39m x 3.10m)

Dining Area: 8'4 x 7'9 (2.54m x 2.36m)

### FIRST FLOOR

Landing

Bedroom 1: 11'0 x 10'11 (3.36m x 3.33m)

Bedroom 2: 12'7 x 10'2 (3.84m x 3.10m)  
narrowing to 6'10 x 7'10 (2.08m x 2.39m)

Bedroom 3: 12'0 (3.66m) narrowing to 5'10  
(1.78m) x 7'2 (2.19m)

Bathroom: 7'5 x 6'2 (2.26m x 1.88m)

### OUTSIDE

Front Garden

Rear Garden

Garage

Driveway





## Main features

- Extended and improved terraced house
- Garage and parking at the rear
- Re-fitted bathroom and ground floor shower room
- Enlarged kitchen/Breakfast room opening to lounge and dining area
- Short walk to local shops, schools and Crawleys town centre and railway station
- Cubitt & West, Crawley - 01293 522233



### Nearest Schools

Primary Schools: Southgate Primary 0.1 miles, St Francis of Assisi Catholic Primary, Crawley 0.4 miles, Hilltop Primary 0.6 miles

Secondary Schools: Thomas Bennett Community College



### Transport Information

Train Stations: Crawley 1.0 miles, Three Bridges 1.9 miles, Ifield 2.2 miles



### Address

Barrington Road, Crawley, West Sussex, RH10



### Directions

For directions to this property please contact us.





**cubitt&west**  
Helping you move forwards

Call Crawley Branch 01293 522233 ■ [cubittandwest.co.uk](https://cubittandwest.co.uk)



■ Legal advice should be taken to verify fixtures/fittings, planning, alterations and/or lease details ■ Appliances & services are untested, dimensions are approximate and floor plans are not to scale  
■ Through a Homewise Home For Life Plan people aged 60+ can secure this property for up to 59% less, by purchasing a Lifetime Lease.



20420290/20250411/SS/DC