



Guide Price
£450,000

Freehold

5x  3x  2x 

**Rushetts Road, Langley
Green, Crawley, West
Sussex, RH11**

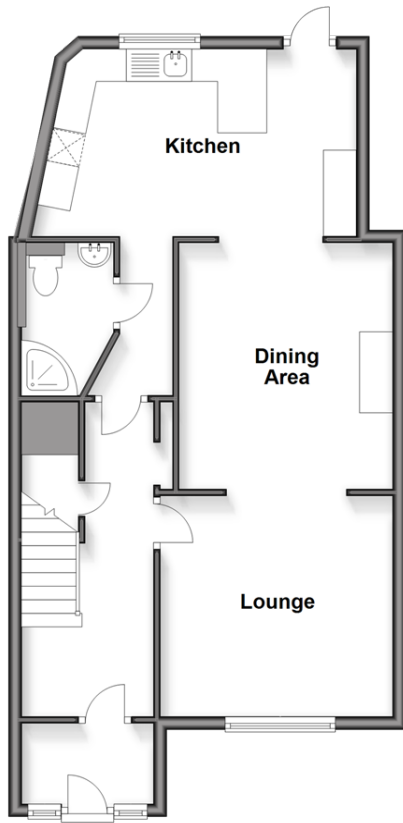
OVER 60?

Secure this property
for up to **59% less!**

cubitt&west
Helping you move forwards

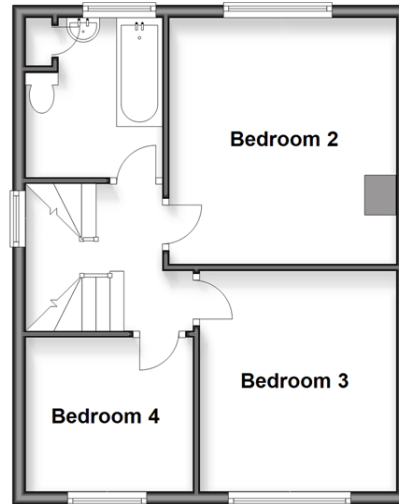
Ground Floor

Approx. 58.2 sq. metres (626.1 sq. feet)



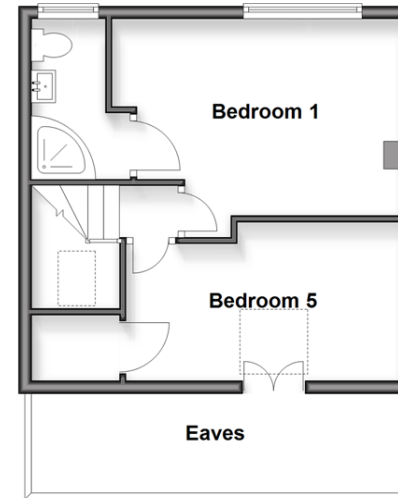
First Floor

Approx. 41.5 sq. metres (446.4 sq. feet)



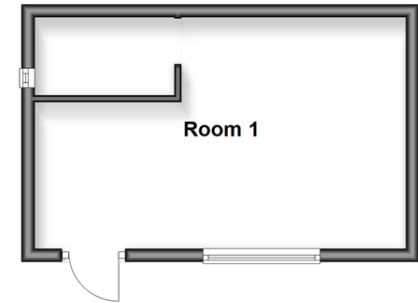
Second Floor

Approx. 31.7 sq. metres (341.1 sq. feet)



Outbuilding

Approx. 20.3 sq. metres (218.1 sq. feet)



Accommodation

GROUND FLOOR

Entrance Porch
Entrance Hall
Lounge : 11'8 x 11'2 (3.56m x 3.41m)
Dining Area: 12'6 (3.81m) narrowing to 9'0 (2.75m) x 10'8 (3.25m)
Kitchen : 16'2 x 9'7 (4.93m x 2.92m)
Inner Hallway
Shower Room: 7'2 x 4'1 (2.19m x 1.25m)

FIRST FLOOR

Landing
Bedroom 2: 12'5 x 12'0 (3.79m x 3.66m)
Bathroom: 8'1 x 6'7 (2.47m x 2.01m)
Bedroom 3: 11'3 x 9'11 (3.43m x 3.02m)
Bedroom 4: 8'8 x 7'10 (2.64m x 2.39m)

SECOND FLOOR

Landing
Bedroom 5: 14'6 x 10'2 (4.42m x 3.10m)
Bedroom 1: 14'6 x 10'2 (4.42m x 3.10m)
En Suite: 8'3 x 3'8 (2.52m x 1.12m)

OUTSIDE

Driveway
Front Garden
Rear Garden
Outbuilding: 18'7 x 11'9 (5.67m x 3.58m)



Main features

- Extended and improved semi detached house over three floors
- Spacious kitchen/breakfast room and open plan lounge & dining area
- Bedroom one has an en suite shower room in addition to the family bathroom and cloakroom
- Driveway for a couple of cars, a rear garden and large home office
- Short walk to local schools and shops



Nearest Schools

Primary Schools: Our Lady Queen of Heaven Catholic Primary, Crawley 0.1 miles, Langley Green Primary 0.5 miles, West Green Primary 1.0 miles

Secondary Schools: Manor Green College 0.9 miles,



Transport Information

Train Stations: Ifield 1.2 miles, Crawley 2.0 miles, Three Bridges 2.7 miles



Address

Rushetts Road, Langley Green, Crawley, West Sussex, RH11



Directions

For directions to this property please contact us.



cubitt&west
Helping you move forwards

Call Crawley Branch 01293 522233 ■ cubittandwest.co.uk



■ Legal advice should be taken to verify fixtures/fittings, planning, alterations and/or lease details ■ Appliances & services are untested, dimensions are approximate and floor plans are not to scale
■ Through a Homewise Home For Life Plan people aged 60+ can secure this property for up to 59% less, by purchasing a Lifetime Lease.



20419663/20250409/TH/DC