



**Price**  
**£450,000**

**Freehold**

3x  1x  2x 

**Feroners Close, Crawley,  
West Sussex, RH10**

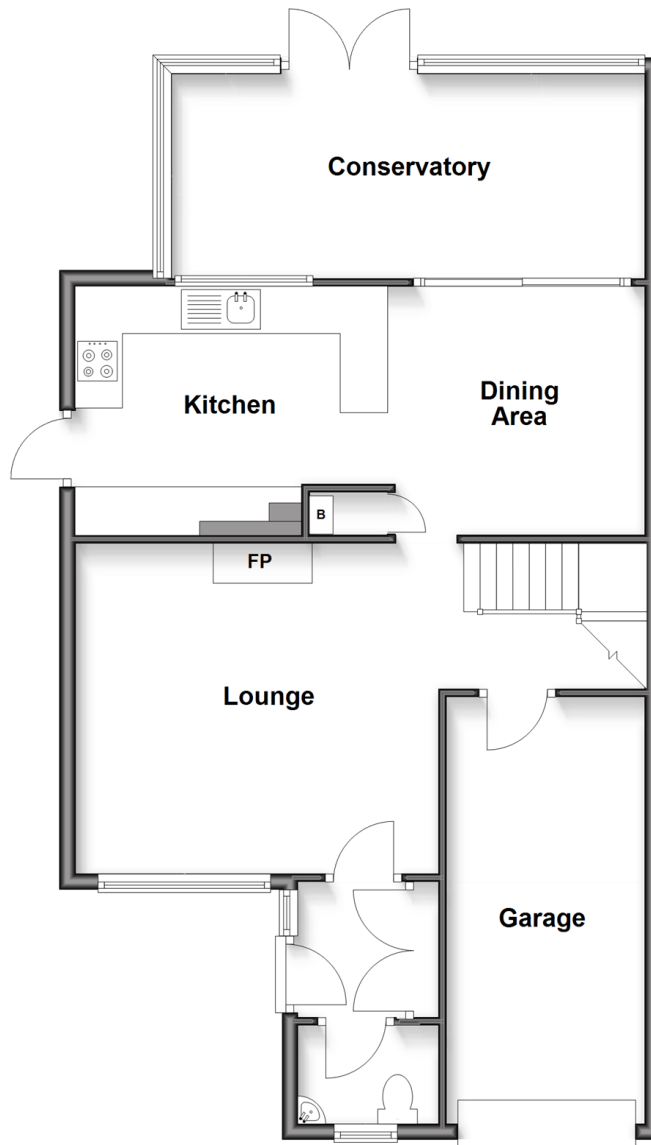
**OVER 60?**

Secure this property  
for up to **59% less!**

**cubitt&west**  
Helping you move forwards

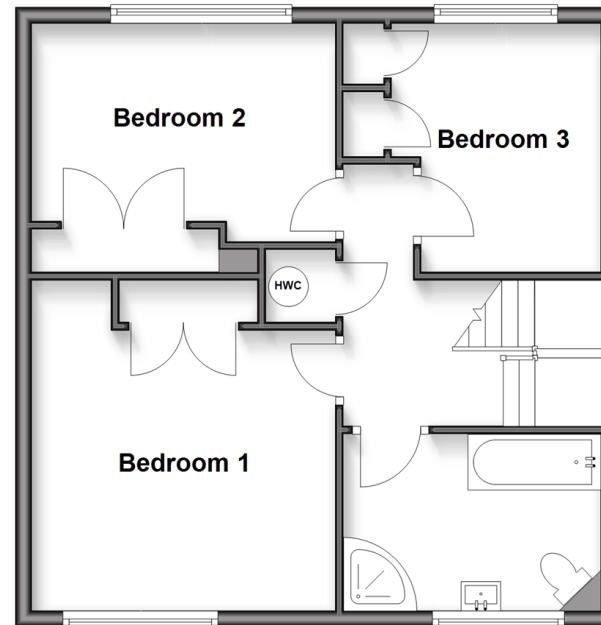
## Ground Floor

Approx. 83.0 sq. metres (892.9 sq. feet)



## First Floor

Approx. 53.2 sq. metres (572.6 sq. feet)



## Accommodation

### GROUND FLOOR

Entrance Hall

Downstairs Cloakroom

Lounge : 15'9 x 13'7 (4.80m x 4.14m)

Kitchen : 13'2 x 10'1 (4.02m x 3.08m)

Dining Area: 10'3 x 10'3 (3.13m x 3.13m)

Conservatory : 19'5 x 8'4 (5.92m x 2.54m)

### FIRST FLOOR

Landing

Bedroom 1: 12'5 x 11'6 (3.79m x 3.51m)

Bedroom 2: 12'5 x 8'2 (3.79m x 2.49m)

Bedroom 3: 10'3 x 8'7 (3.13m x 2.62m)

Bathroom

### OUTSIDE

Front Garden

Rear Garden

Garage





## Main features

- Good size semi detached house sold with no chain
- Popular Furnace Green location
- Own driveway and garage
- A great opportunity to put your own stamp on a lovely family home
- Well located for local shops, schools, Tilgate Park and Three Bridges
- Cubitt & West, Crawley - 01293 522233



### Nearest Schools

Primary Schools: St Andrew's CofE Primary 0.1 miles, Oaks Primary, The 0.5 miles, Maidenbower Junior School 0.6 miles

Secondary Schools: Oriel High School 0.4 miles, Thomas



### Transport Information

Train Stations: Three Bridges 0.7 miles, Crawley 0.8 miles, Ifield 2.1 miles



### Address

Feroners Close, Crawley, West Sussex, RH10



### Directions

For directions to this property please contact us.





**cubitt&west**  
Helping you move forwards

Call Crawley Branch 01293 522233 ■ [cubittandwest.co.uk](https://cubittandwest.co.uk)



■ Legal advice should be taken to verify fixtures/fittings, planning, alterations and/or lease details ■ Appliances & services are untested, dimensions are approximate and floor plans are not to scale  
■ Through a Homewise Home For Life Plan people aged 60+ can secure this property for up to 59% less, by purchasing a Lifetime Lease.



20420200/20250222/SS/NH1