



Price

£450,000

Freehold

3x  1x  2x 

**Crabbet Road, Crawley,
West Sussex, RH10**

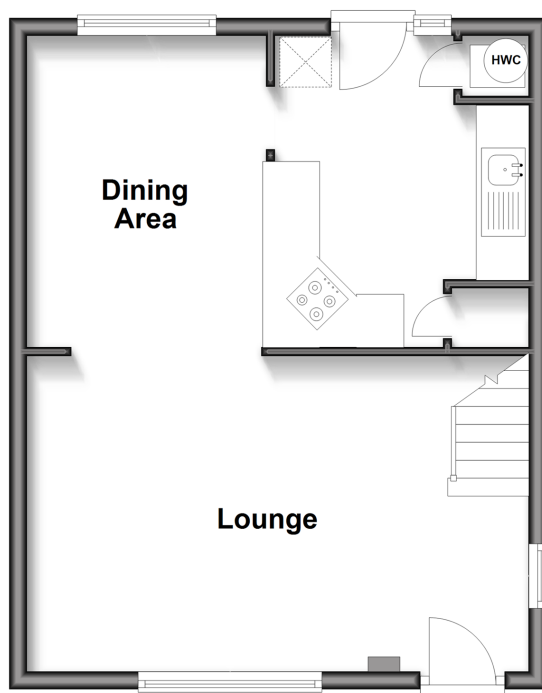
OVER 60?

Secure this property
for up to **59% less!**

cubitt&west
Helping you move forwards

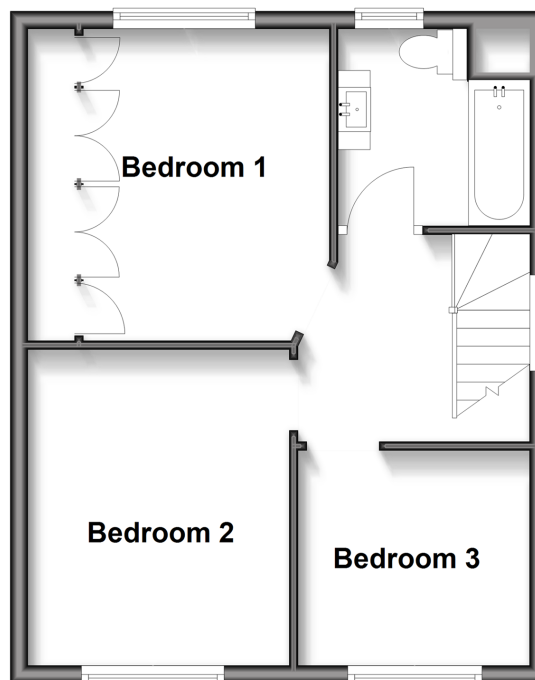
Ground Floor

Approx. 41.3 sq. metres (444.1 sq. feet)



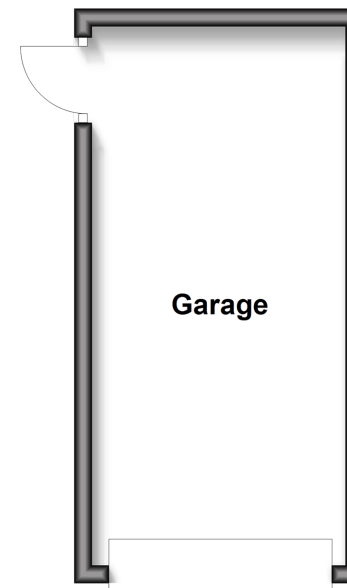
First Floor

Approx. 41.3 sq. metres (444.1 sq. feet)



Outbuilding

Approx. 17.7 sq. metres (190.5 sq. feet)



Accommodation

GROUND FLOOR

Entrance Hall

Lounge: 18'10 x 11'9 (5.74m x 3.58m)

Kitchen Area: 11'7 x 9'9 (3.53m x 2.97m)

Dining Area: 11'8 x 9'0 (3.56m x 2.75m)

FIRST FLOOR

Landing

Bedroom 1: 12'0 (3.66m) narrowing to 9'5 (2.87m) x 11'3 (3.43m)

Bedroom 2: 11'10 x 9'9 (3.61m x 2.97m)

Bedroom 3

Bathroom : 7'10 x 7'2 (2.39m x 2.19m)

OUTSIDE

Front Garden

Rear Garden

Driveway

Garage



Main features

- Semi detached house
- Garage and driveway
- Re-fitted bathroom suite
- Open plan living with the lounge open plan to the dining area and kitchen
- Short walk to Three Bridges railway station, local shops and popular schools



Nearest Schools

Primary Schools: Three Bridges Junior School 0.6 miles, Pound Hill Junior School, Crawley 0.7 miles, Milton Mount Primary 1.1 miles

Secondary Schools: Hazelwick School 0.9 miles, Oriel High



Transport Information

Train Stations: Three Bridges 0.4 miles, Crawley 1.3 miles, Ifield 3.3 miles



Address

Crabbet Road, Crawley, West Sussex, RH10



Directions

For directions to this property please contact us.



cubitt&west
Helping you move forwards

Call Crawley Branch 01293 522233 ■ cubittandwest.co.uk



■ Legal advice should be taken to verify fixtures/fittings, planning, alterations and/or lease details ■ Appliances & services are untested, dimensions are approximate and floor plans are not to scale
■ Through a Homewise Home For Life Plan people aged 60+ can secure this property for up to 59% less, by purchasing a Lifetime Lease.



20420218/20250301/SS/DC