



**Modern  
Auction**

**£250,000  
Freehold**

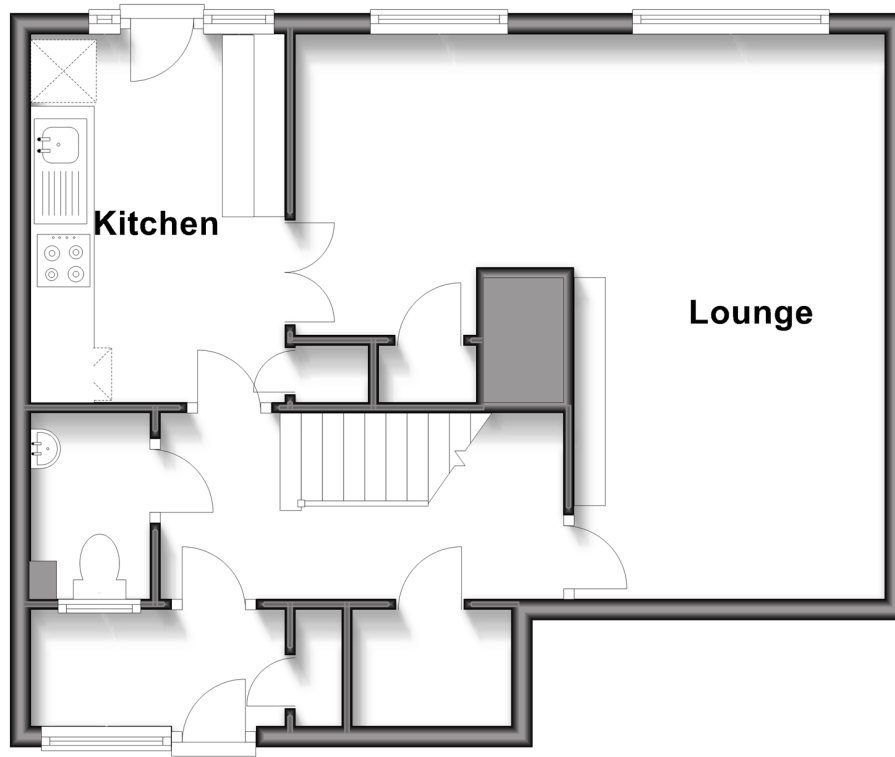
3x  1x  1x 

**Silkin Walk, Dalton  
Close, Crawley, West  
Sussex, RH11**

**cubitt&west**  
Helping you move forwards

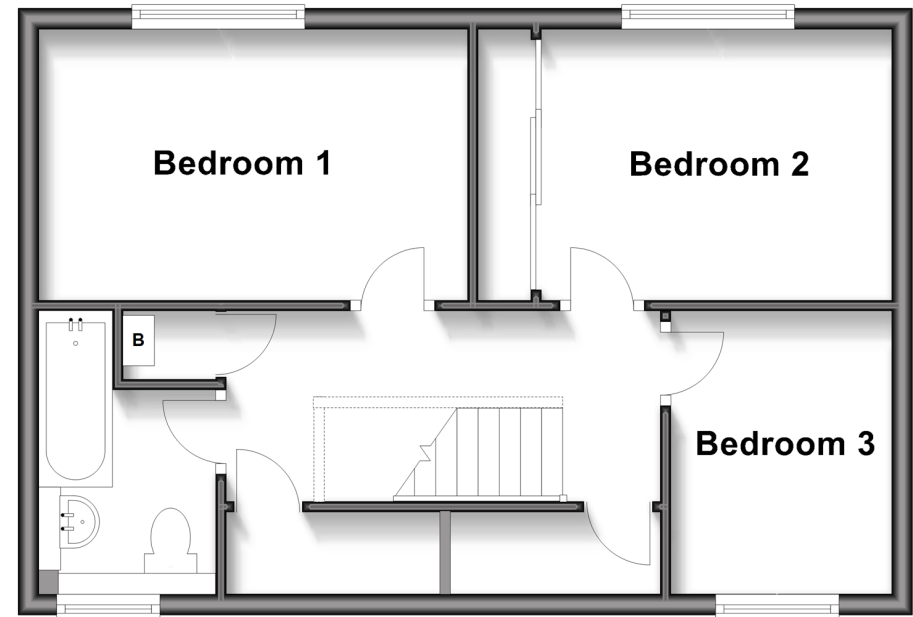
## Ground Floor

Approx. 49.1 sq. metres (528.2 sq. feet)



## First Floor

Approx. 43.4 sq. metres (467.2 sq. feet)



## Accommodation

### GROUND FLOOR

Entrance Hall  
Downstairs Cloakroom  
Lounge: 17'7 x 9'7 (5.36m x 2.92m)  
Kitchen: 11'5 x 7'9 (3.48m x 2.36m)  
Dining Room: 9'3 x 8'7 (2.82m x 2.62m)

### FIRST FLOOR

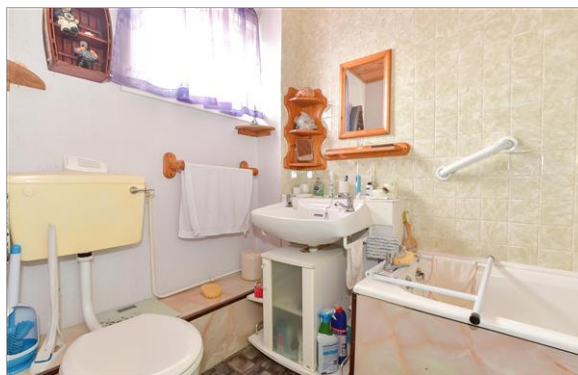
Landing  
Bedroom 1: 13'1 x 8'5 (3.99m x 2.57m)  
Bedroom 2: 11'1 x 8'4 (3.38m x 2.54m)

Bedroom 3: 8'8 x 6'8 (2.64m x 2.03m)  
Bathroom

### OUTSIDE

Front Garden  
Rear Garden  
Garage En Bloc





## Main features

- For sale by Modern Auction - T&C's apply
- Subject to an undisclosed Reserve Price
- Buyer's fees apply
- End of terraced home
- Communal parking



### Nearest Schools

Primary Schools: Seymour Primary 0.3 miles, Broadfield East Junior School 0.5 miles, Bewbush Community Primary 0.8 miles

Secondary Schools: Holy Trinity CofE Secondary School,



### Transport Information

Train Stations: Ifield 1.5 miles, Crawley 1.6 miles, Faygate 2.3 miles



### Address

Silkin Walk, Dalton Close, Crawley, West Sussex, RH11



### Directions

For directions to this property please contact us.





**cubitt&west**  
Helping you move forwards

Call Crawley Branch 01293 522233 ■ [cubittandwest.co.uk](https://cubittandwest.co.uk)



■ Legal advice should be taken to verify fixtures/fittings, planning, alterations and/or lease details ■ Appliances & services are untested, dimensions are approximate and floor plans are not to scale



20420173/20250321/SS/NH1



Internal error in letter template 368 - Data type mismatch.

Template timestamp is 25/02/25 09:22:37

Record identifiers:

Property = 20420173

Please copy this detail out of the letter and paste it into a Help Desk call, then take a Diagnostic Snapshot & attach it to the same call.