

OVER 60?

Secure this property
for up to **59% less!**



Price

£500,000

Freehold

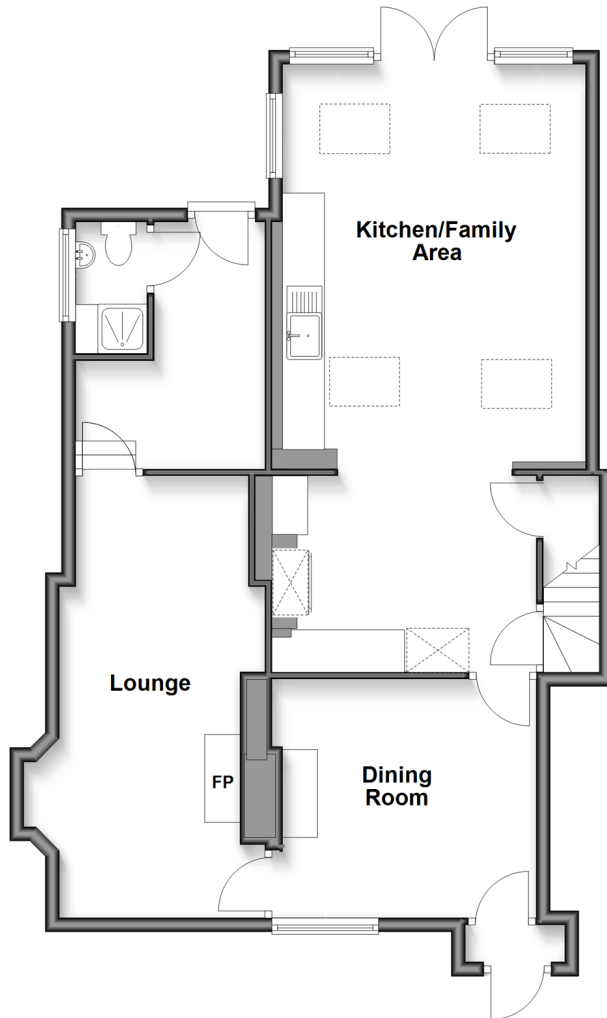
4x  2x  3x 

Tilgate Forest Row, Pease Pottage,
Crawley, West Sussex, RH11

cubitt&west
Helping you move forwards

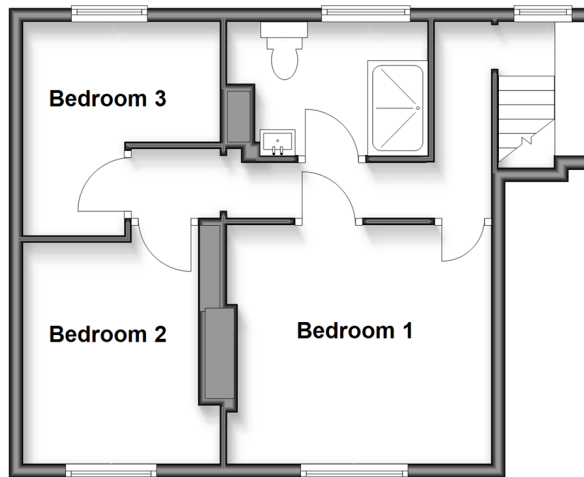
Ground Floor

Approx. 82.4 sq. metres (887.0 sq. feet)



First Floor

Approx. 44.8 sq. metres (482.4 sq. feet)



Accommodation

GROUND FLOOR

Entrance Porch

Lounge: 20'7 (6.28m) x 9'4 (2.85m)
narrowing to 8'3 (2.52m)

Dining Room: 12'5 x 11'3 (3.79m x 3.43m)

Kitchen/Family Area: 28'6 (8.69m) x 14'2
(4.32m) narrowing to 12'4 (3.76m)

Bedroom 4/Study: 12'1 (3.69m) x 8'10
(2.69m) narrowing to 5'2 (1.58m)

En Suite Shower Room: 6'1 x 3'3 (1.86m x
0.99m)

FIRST FLOOR

Landing

Bedroom 1: 12'6 x 11'2 (3.81m x 3.41m)

Bedroom 2: 8'2 x 6'5 (2.49m x 1.96m)

Bedroom 3: 10'1 (3.08m) narrowing to 5'11
(1.80m) x 9'3 (2.82m)

Shower Room: 9'4 (2.85m) narrowing to
8'2 (2.49m) x 6'5 (1.96m)

OUTSIDE

Front Garden

Rear Garden

Hard Standing



Main features

- No upper chain
- Spacious extended period cottage
- Lounge with wood burner and separate dining room
- Impressive fitted kitchen/family room with vaulted ceiling and re-fitted units
- Rear garden overlooking fields with gated access and area of hardstanding



Nearest Schools

Primary Schools: Handcross Primary 1.3 miles, Broadfield East Junior School 2.1 miles, Bewbush Community Primary 2.1 miles

Secondary Schools: Thomas Bennett Community College



Transport Information

Train Stations: Crawley 3.2 miles, Ifield 3.5 miles, Three Bridges 4.0 miles



Address

Tilgate Forest Row, Pease Pottage, Crawley, West Sussex, RH11



Directions

For directions to this property please contact us.



cubitt&west
Helping you move forwards

Call Crawley Branch 01293 522233 ■ cubittandwest.co.uk



■ Legal advice should be taken to verify fixtures/fittings, planning, alterations and/or lease details ■ Appliances & services are untested, dimensions are approximate and floor plans are not to scale
■ Through a Homewise Home For Life Plan people aged 60+ can secure this property for up to 59% less, by purchasing a Lifetime Lease.



20406386/20250321/SS/DC