



Price
£500,000

Freehold

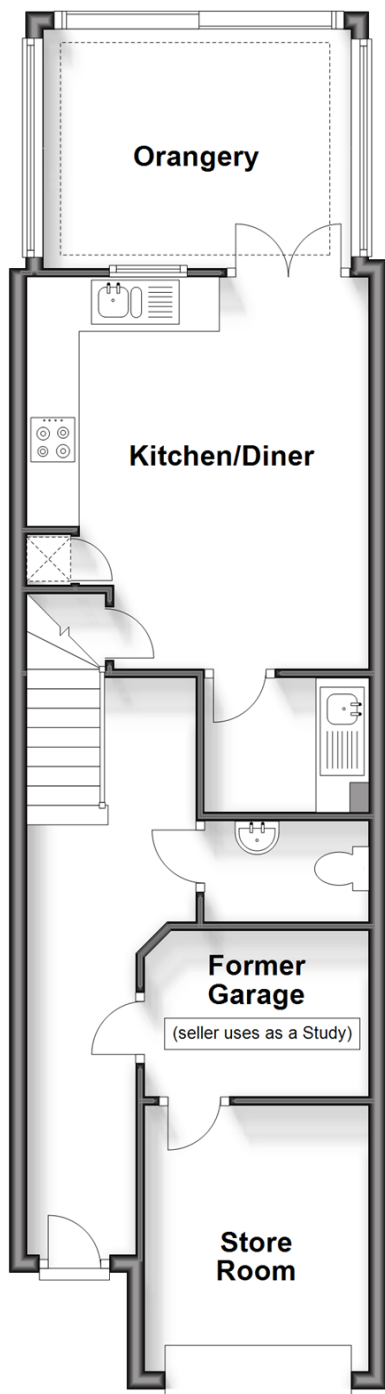
3x  2x  1x 

**Argyll Court, Crawley,
West Sussex, RH11**

OVER 60?

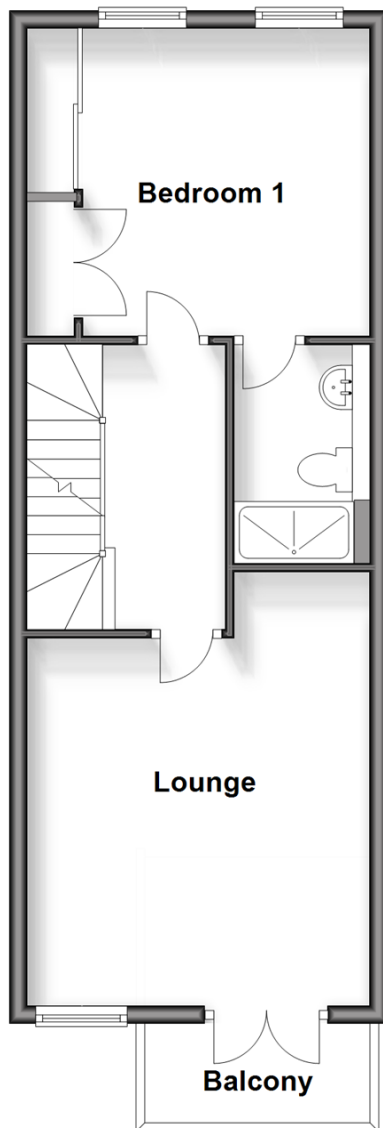
Secure this property
for up to **59% less!**

cubitt&west
Helping you move forwards



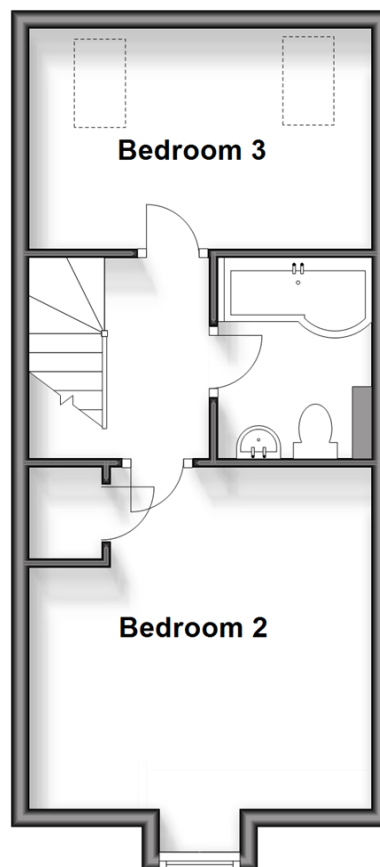
First Floor

Approx. 43.2 sq. metres (465.0 sq. feet)



Second Floor

Approx. 35.0 sq. metres (376.4 sq. feet)



Accommodation

GROUND FLOOR

Entrance Hall

Kitchen/Diner: 14'7 x 13'0 (4.45m x 3.97m)

Utility Room: 6'1 x 5'0 (1.86m x 1.53m)

Orangery: 9'6 x 9'6 (2.90m x 2.90m)

Store Room (Former Garage): 10'5 x 8'5 (3.18m x 2.57m)

Downstairs Cloakroom

Study (Former Garage): 8'5 x 6'2 (2.57m x 1.88m)

FIRST FLOOR

Landing

Lounge: 15'11 (4.85m) narrowing to 13'8 (4.17m) x 12'11 (3.94m)

Balcony

Bedroom 1: 12'11 x 11'4 (3.94m x 3.46m)

En Suite Shower Room: 8'5 x 5'0 (2.57m x 1.53m)

SECOND FLOOR

Landing

Bedroom 2: 14'3 (4.35m) narrowing to 12'9 (3.89m) x 12'11 (3.94m)

Bedroom 3: 12'11 x 8'2 (3.94m x 2.49m)

Bathroom: 7'5 x 5'8 (2.26m x 1.73m)

OUTSIDE

Front Garden

Rear Garden

Driveway



Main features

- Modern Town House in a gated development
- Lounge and Orangery with views over the garden
- Impressive kitchen/diner with integrated appliances and utility room
- Driveway and garage with the rear section converted to study
- Short walk to Crawley's town centre, local shops and railway station



Nearest Schools

Primary Schools: Southgate Primary 0.3 miles, Hilltop Primary 0.3 miles, St Francis of Assisi Catholic Primary, Crawley 0.3 miles

Secondary Schools: St Wilfrid's Catholic Comprehensive



Transport Information

Train Stations: Crawley 0.3 miles, Ifield 1.0 miles, Three Bridges 1.4 miles



Address

Argyll Court, Crawley, West Sussex, RH11



Directions

For directions to this property please contact us.



cubitt&west
Helping you move forwards

Call Crawley Branch 01293 522233 ■ [cubittandwest.co.uk](https://www.cubittandwest.co.uk)



■ Legal advice should be taken to verify fixtures/fittings, planning, alterations and/or lease details ■ Appliances & services are untested, dimensions are approximate and floor plans are not to scale
■ Through a Homewise Home For Life Plan people aged 60+ can secure this property for up to 59% less, by purchasing a Lifetime Lease.



20419002/20250201/SS/DC