

OVER 60?

Secure this property
for up to **59% less!**

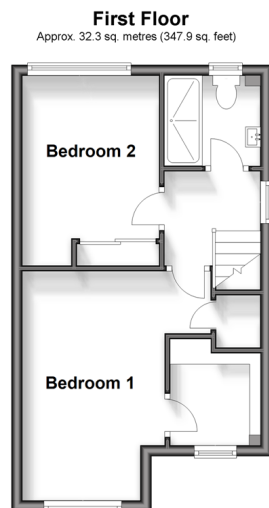
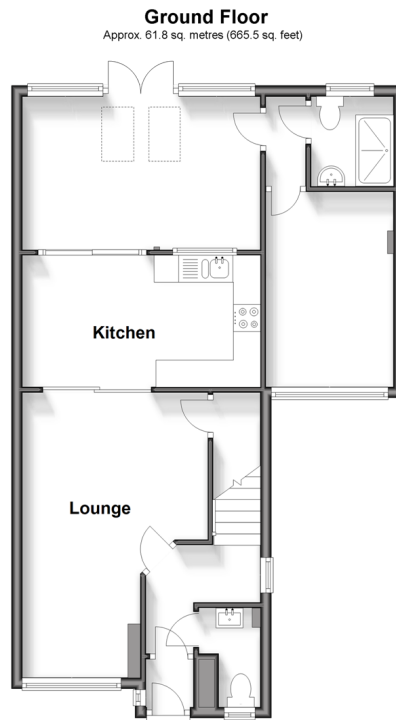


Price
£425,000
Freehold

3x  2x  1x 

Fenchurch Road, Maidenbower, Crawley,
West Sussex, RH10

cubitt&west
Helping you move forwards



Accommodation

GROUND FLOOR

Entrance Hall

Cloakroom

Lounge: 17'7 x 11'5 (5.36m x 3.48m)

Kitchen/Breakfast Room: 14'7 x 8'0 (4.45m x 2.44m)

Family Room: 14'5 x 9'3 (4.40m x 2.82m)

Inner Hallway

Bedroom 3: 11'4 x 7'10 (3.46m x 2.39m)

Shower Room: 5'7 x 5'0 (1.70m x 1.53m)

FIRST FLOOR

Landing

Bedroom 1: 13'11 (4.24m) x 11'6 (3.51m)
narrowing to 7'1 (2.16m)

Dressing Room: 6'5 x 5'7 (1.96m x 1.70m)

Bedroom 2: 11'6 x 8'4 (3.51m x 2.54m)

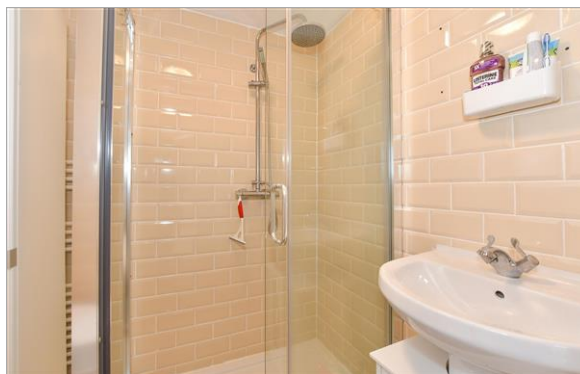
Shower Room: 5'11 x 5'6 (1.80m x 1.68m)

OUTSIDE

Front Garden

Rear Garden

Driveway



Main features

- Extended and improved semi detached house
- Re-fitted kitchen/breakfast room with integrated appliances
- Lounge and separate family room
- Ground floor bedroom, with shower room in addition to the cloakroom and first floor bathroom
- Short walk to Three Bridges railway station, schools and shops



Nearest Schools

Primary Schools: Maidenbower Junior School 0.6 miles, Pound Hill Junior School, Crawley 1.2 miles, Southgate Primary 1.3 miles

Secondary Schools: Oriel High School 0.5 miles, Hazelwick



Transport Information

Train Stations: Three Bridges 1.0 miles, Crawley 2.4 miles, Horley 4.2 miles



Address

Fenchurch Road, Maidenbower, Crawley, West Sussex, RH10



Directions

For directions to this property please contact us.



cubitt&west
Helping you move forwards

Call Crawley Branch 01293 522233 ■ cubittandwest.co.uk



■ Legal advice should be taken to verify fixtures/fittings, planning, alterations and/or lease details ■ Appliances & services are untested, dimensions are approximate and floor plans are not to scale
■ Through a Homewise Home For Life Plan people aged 60+ can secure this property for up to 59% less, by purchasing a Lifetime Lease.



20414640/20250212/SS/DC