



**Price**  
**£375,000**

**Freehold**

3x  1x  1x 

**Hyndman Close,  
Crawley, West Sussex,  
RH11**

**OVER 60?**

Secure this property  
for up to **59% less!**

**cubitt&west**  
Helping you move forwards



## Accommodation

### GROUND FLOOR

Entrance Hall

Downstairs Cloakroom

Kitchen: 9'6 x 9'4 (2.90m x 2.85m)

Lounge/Diner: 17'0 (5.19m) narrowing to 13'9 (4.19m) x 15'7 (4.75m)

### FIRST FLOOR

Landing

Bedroom 1: 12'3 x 10'3 (3.74m x 3.13m)

Bedroom 2: 10'7 x 7'3 (3.23m x 2.21m)

Bedroom 3: 9'8 x 6'11 (2.95m x 2.11m)

Shower Room: 6'7 x 6'4 (2.01m x 1.93m)

### OUTSIDE

Front Garden

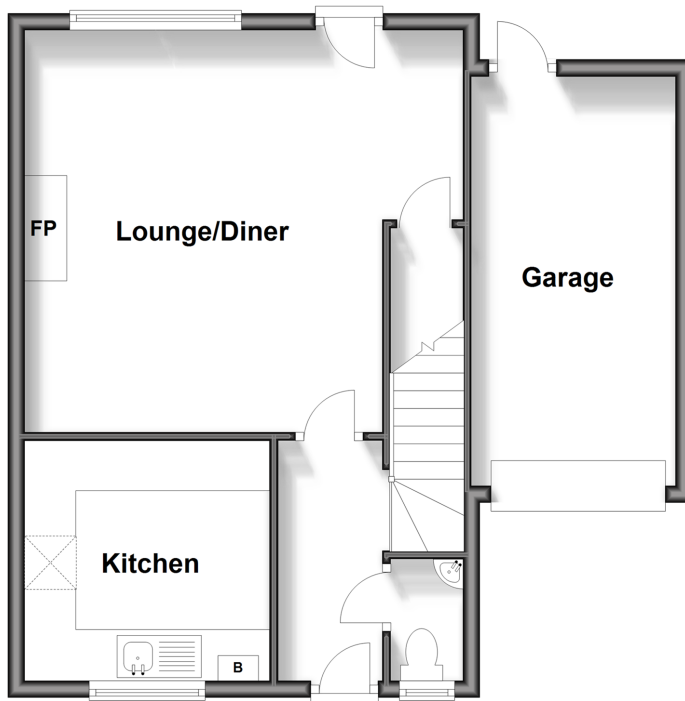
Rear Garden

Garage

Driveway

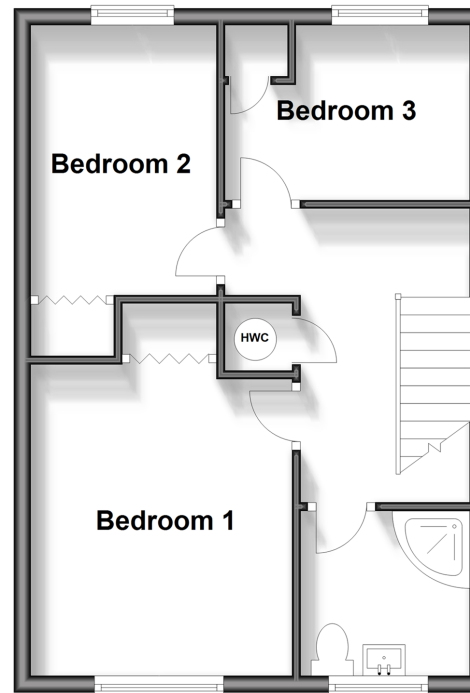
### Ground Floor

Approx. 52.4 sq. metres (564.2 sq. feet)



### First Floor

Approx. 40.2 sq. metres (432.2 sq. feet)





## Main features

- Modern spacious semi detached house
- Quiet cul de sac location
- Double glazed and radiator heating
- Re-fitted kitchen and a re-fitted shower room and cloakroom
- Secluded rear garden, driveway approaching the attached garage



### Nearest Schools

Primary Schools: Broadfield East Junior School 0.6 miles, Seymour Primary 0.7 miles, Desmond Anderson Primary 0.9 miles

Secondary Schools: Thomas Bennett Community College



### Transport Information

Train Stations: Crawley 1.7 miles, Ifield 1.9 miles, Faygate 2.6 miles



### Address

Hyndman Close, Crawley, West Sussex, RH11



### Directions

For directions to this property please contact us.





**cubitt&west**  
Helping you move forwards

Call Crawley Branch 01293 522233 ■ [cubittandwest.co.uk](https://cubittandwest.co.uk)



■ Legal advice should be taken to verify fixtures/fittings, planning, alterations and/or lease details ■ Appliances & services are untested, dimensions are approximate and floor plans are not to scale  
■ Through a Homewise Home For Life Plan people aged 60+ can secure this property for up to 59% less, by purchasing a Lifetime Lease.



20420103/20241123/SS/DC