



Price
£425,000

Freehold

3x  1x  2x 

**Ash Road, Crawley,
West Sussex, RH10**

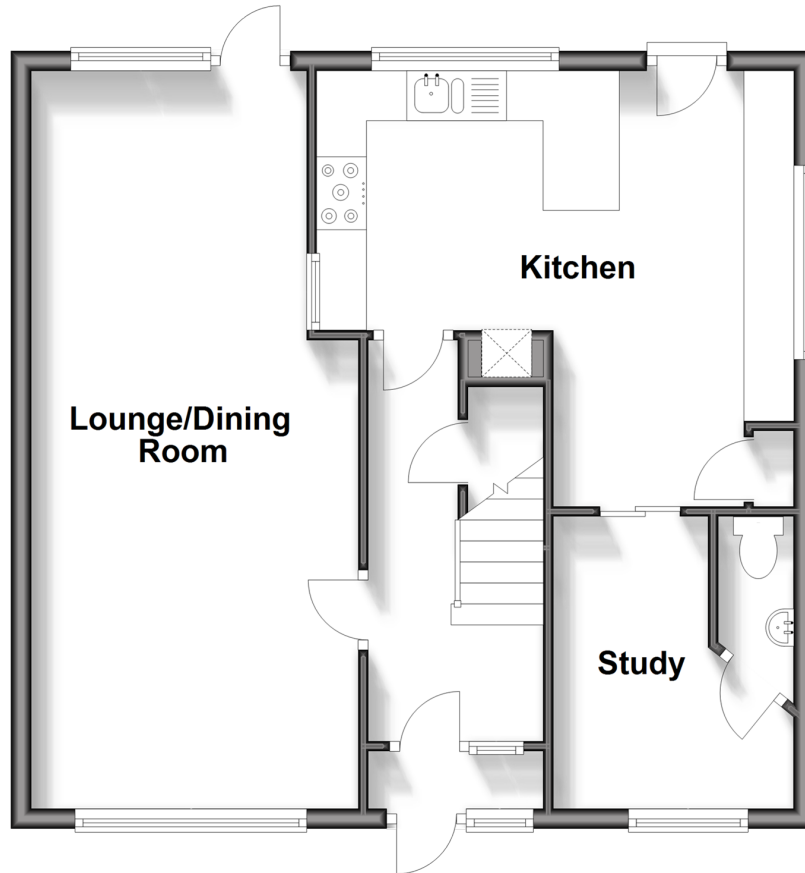
OVER 60?

Secure this property
for up to **59% less!**

cubitt & west
Helping you move forwards

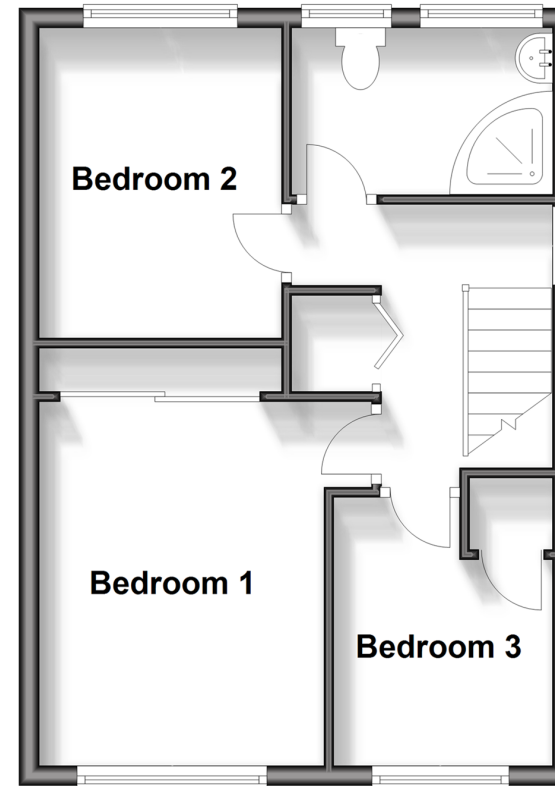
Ground Floor

Approx. 56.5 sq. metres (607.9 sq. feet)



First Floor

Approx. 37.7 sq. metres (406.3 sq. feet)



Accommodation

GROUND FLOOR

Entrance Hall

Downstairs Cloakroom

Kitchen: 16'1 x 13'7 (4.91m x 4.14m)

Lounge/Dining Room: 22'8 x 10'7
(6.91m x 3.23m)

Study: 8'5 x 7'9 (2.57m x 2.36m)

FIRST FLOOR

Landing

Bedroom 1: 11'3 x 9'4 (3.43m x 2.85m)

Bedroom 2: 10'2 x 7'9 (3.10m x 2.36m)

Bedroom 3: 8'1 x 7'2 (2.47m x 2.19m)

Shower Room

OUTSIDE

Front Garden

Rear Garden

Driveway

Garage



Main features

- Spacious and extended home sold with no chain
- Popular Three Bridges location
- Garage and own driveway
- Large breakfast area which extends through to additional reception rooms and cloakroom
- Great location close to Hazelwck school,local supermarkets and Three Bridges station.



Nearest Schools

Primary Schools: Three Bridges Junior School 0.4 miles, Milton Mount Primary 0.6 miles, Northgate Primary 0.6 miles

Secondary Schools: Hazelwick School 0.2 miles, Oriel High



Transport Information

Train Stations: Three Bridges 0.8 miles, Crawley 1.6 miles, Ifield 2.8 miles



Address

Ash Road, Crawley, West Sussex, RH10



Directions

For directions to this property please contact us.



cubitt&west
Helping you move forwards

Call Crawley Branch 01293 522233 ■ [cubittandwest.co.uk](https://www.cubittandwest.co.uk)



- Legal advice should be taken to verify fixtures/fittings, planning, alterations and/or lease details
- Appliances & services are untested, dimensions are approximate and floor plans are not to scale
- Through a Homewise Home For Life Plan people aged 60+ can secure this property for up to 59% less, by purchasing a Lifetime Lease.



20420023/20241015/NH1/NH1