



Price
£400,000

Freehold

3x  1x  1x 

**Heathfield, Pound Hill,
Crawley, West Sussex,
RH10**

OVER 60?

Secure this property
for up to **59% less!**

cubitt&west
Helping you move forwards



Main features

- Well maintained three bedroom semi-detached house in Pound Hill
- Driveway for two cars plus attached garage
- Modern kitchen and bathroom
- Located close to schools, shops, and transport links for London and Gatwick Airport

Accommodation

GROUND FLOOR

Entrance Hall

Downstairs Cloakroom: 4'0 x 3'0 (1.22m x 0.92m)

Lounge: 13'0 x 11'0 (3.97m x 3.36m)

Dining Room: 9'1 x 8'4 (2.77m x 2.54m)

Kitchen : 12'3 x 9'8 (3.74m x 2.95m)

Utility Room : 6'4 x 3'4 (1.93m x 1.02m)

FIRST FLOOR

Landing

Bedroom 1: 12'5 x 9'5 (3.79m x 2.87m)

Bedroom 2: 9'5 x 9'3 (2.87m x 2.82m)

Bedroom 3: 9'2 x 6'5 (2.80m x 1.96m)

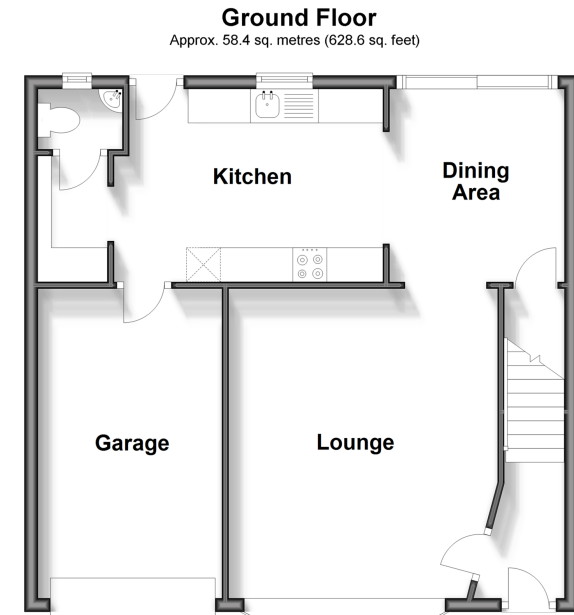
Bathroom: 6'4 x 6'1 (1.93m x 1.86m)

OUTSIDE

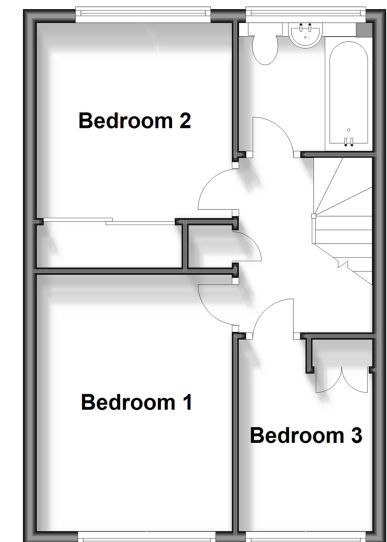
Rear Garden

Garage

Driveway



Ground Floor
Approx. 37.0 sq. metres (398.1 sq. feet)



Call Crawley - 01293 522233 ■ cubittandwest.co.uk

- Legal advice should be taken to verify fixtures/fittings, planning, alterations and/or lease details
- Appliances & services are untested, dimensions are approximate and floor plans are not to scale
- Through a Homewise Home For Life Plan people aged 60+ can secure this property for up to 59% less, by purchasing a Lifetime Lease.



20419885/20250513/SS/SB