



Price
£350,000

Freehold

3x  1x  1x 

**Admiral Road, Bewbush,
Crawley, West Sussex,
RH11**

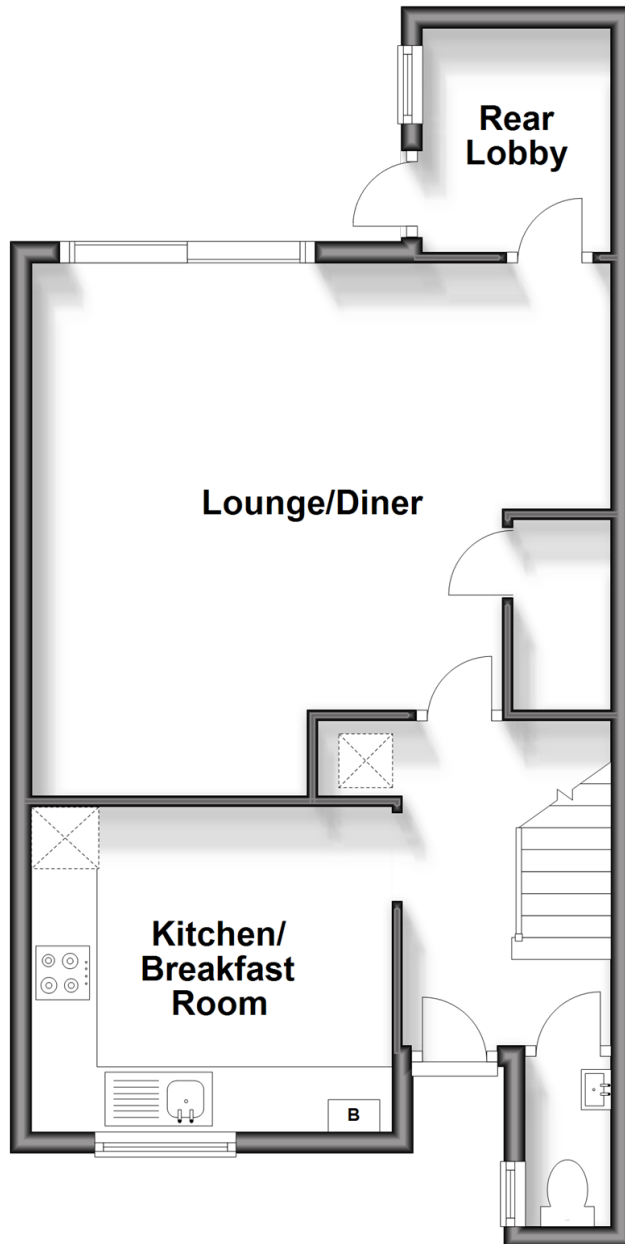
OVER 60?

Secure this property
for up to **59% less!**

cubitt & west
Helping you move forwards

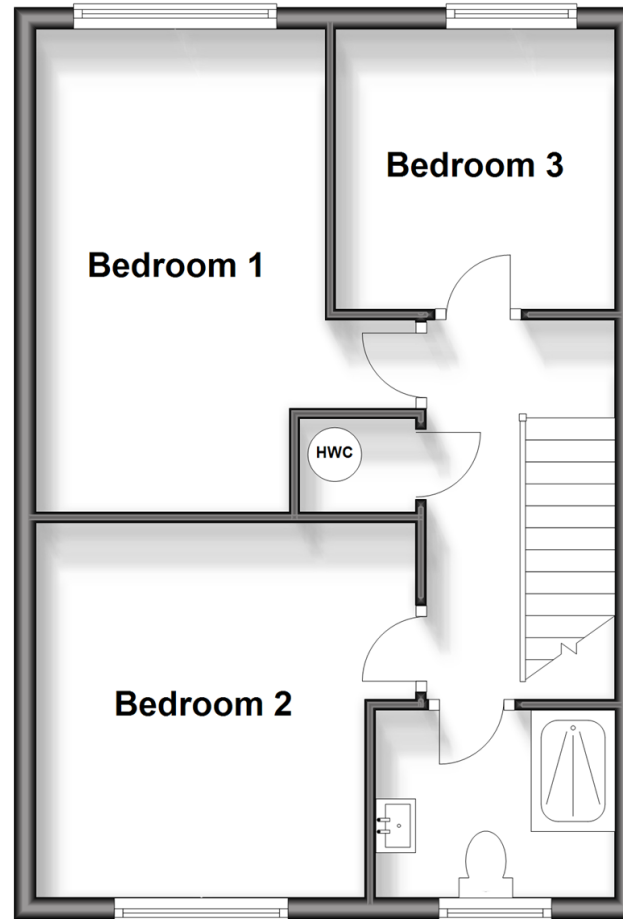
Ground Floor

Approx. 47.1 sq. metres (507.1 sq. feet)



First Floor

Approx. 43.8 sq. metres (471.7 sq. feet)



Accommodation

GROUND FLOOR

Entrance Hall

Downstairs Cloakroom

Kitchen /Breakfast Room: 11'0 x 9'10 (3.36m x 3.00m)

Lounge/Diner: 17'8 x 16'4 (5.39m x 4.98m)
narrowing to 14'6 x 13'7 (4.42m x 4.14m)

Rear Lobby: 6'10 x 5'9 (2.08m x 1.75m)

FIRST FLOOR

Landing

Bedroom 1: 14'9 x 8'9 (4.50m x 2.67m)

Bedroom 2: 11'8 (3.56m) x 11'7 (3.53m)
narrowing to 10'1 (3.08m)

Bedroom 3: 8'10 x 8'8 (2.69m x 2.64m)

Shower Room: 7'5 x 5'10 (2.26m x 1.78m)

OUTSIDE

Front Garden

Rear Garden

Driveway

Garage: 16'4 x 8'2 (4.98m x 2.49m)



Main features

- No upper chain
- Updated and improved terraced house
- Driveway and garage at the rear
- Re-fitted kitchen/breakfast room with integrated appliances and a re-fitted shower room and cloakroom
- Short walk to local schools, shops and public transport

Nearest Schools

Primary Schools: Seymour Primary 0.2 miles, Gossops Green Primary 0.4 miles, Bewbush Community Primary 0.4 miles

Secondary Schools: Holy Trinity CofE Secondary School,

Transport Information

Train Stations: Ifield 0.9 miles, Crawley 1.2 miles, Faygate 2.2 miles

Address

Admiral Road, Bewbush, Crawley, West Sussex, RH11

Directions

For directions to this property please contact us.



cubitt&west
Helping you move forwards

Call Crawley Branch 01293 522233 ■ [cubittandwest.co.uk](https://www.cubittandwest.co.uk)



- The seller is a person connected with Cubitt & West as defined in the Estate Agents Act 1979
- Appliances & services are untested, dimensions are approximate and floor plans are not to scale

- Legal advice should be taken to verify fixtures/fittings, planning, alterations and/or lease details
- Through a Homewise Home For Life Plan people aged 60+ can secure this property for up to 59% less, by purchasing a Lifetime Lease.



20420032/20241002/SS/DC