



**Price**

**£600,000**

**Freehold**

3x  1x  2x 

**Home Close, Crawley,  
West Sussex, RH10**

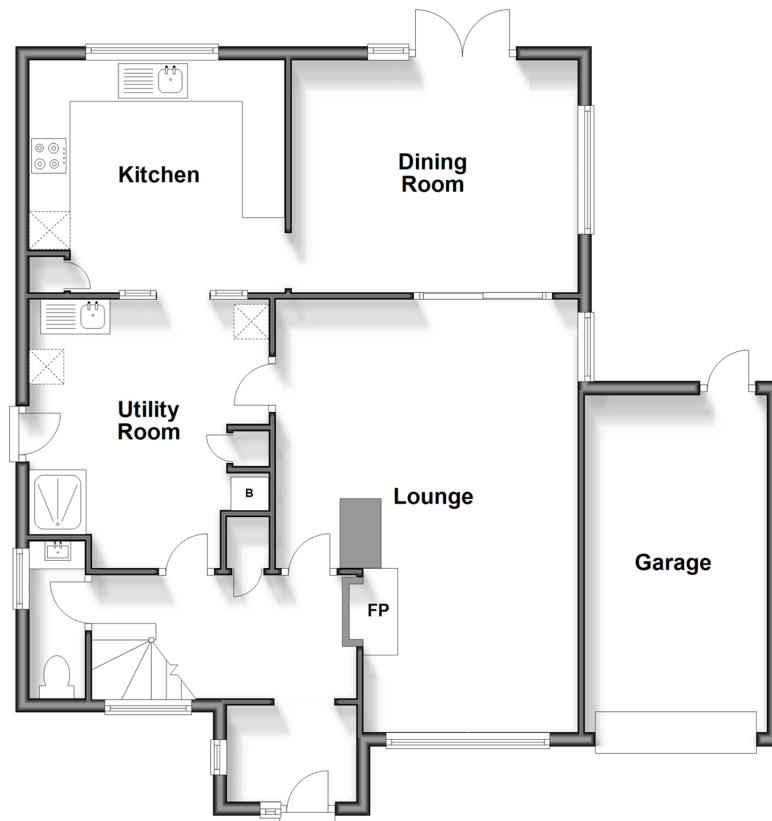
**OVER 60?**

Secure this property  
for up to **59% less!**

**cubitt & west**  
Helping you move forwards

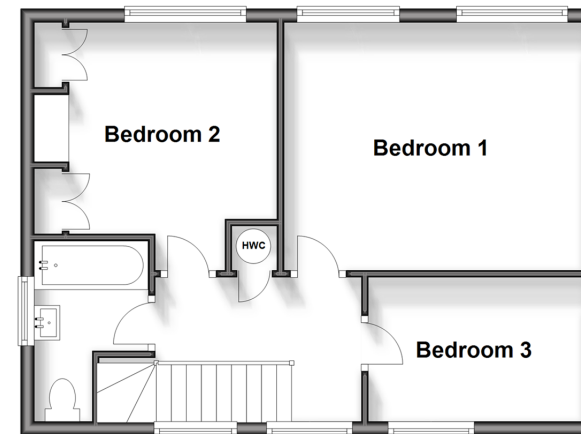
## Ground Floor

Approx. 90.6 sq. metres (975.4 sq. feet)



## First Floor

Approx. 45.6 sq. metres (491.1 sq. feet)



## Accommodation

### GROUND FLOOR

Entrance Porch

Entrance Hall

Lounge: 20'8 (6.30m) x 14'3 (4.35m) narrowing to 9'1 (2.77m)

Dining Room : 13'7 x 11'1 (4.14m x 3.38m)

Kitchen : 12'1 x 11'3 (3.69m x 3.43m)

Utility Room : 12'8 x 11'4 (3.86m x 3.46m)

Downstairs Cloakroom

### FIRST FLOOR

Landing

Bedroom 1: 14'5 x 11'9 (4.40m x 3.58m)

Bedroom 2: 11'5 x 10'0 (3.48m x 3.05m)

Bedroom 3 : 9'11 x 6'11 (3.02m x 2.11m)

Bathroom : 8'7 (2.62m) narrowing to 5'5 (1.65m) x 5'6 (1.68m)

### OUTSIDE

Front Garden

Rear Garden

Driveway

Garage



## Main features

- No upper chain
- Extended and detached house
- Large lounge and separate dining room
- Good size secluded rear garden, plenty of off road parking and garage
- Sought after location just a short walk to Three Bridges station and local shops



### Nearest Schools

Primary Schools: Milton Mount Primary 0.0 miles, Pound Hill Junior School, Crawley 0.4 miles, Three Bridges Junior School 1.0 miles

Secondary Schools: Hazelwick School 0.5 miles, Oriel High



### Transport Information

Train Stations: Three Bridges 0.6 miles, Crawley 1.6 miles, Gatwick Airport 2.1 miles



### Address

Home Close, Crawley, West Sussex, RH10



### Directions

For directions to this property please contact us.



**cubitt&west**  
Helping you move forwards

Call Crawley Branch 01293 522233 ■ [cubittandwest.co.uk](http://cubittandwest.co.uk)



- Legal advice should be taken to verify fixtures/fittings, planning, alterations and/or lease details
- Appliances & services are untested, dimensions are approximate and floor plans are not to scale
- Through a Homewise Home For Life Plan people aged 60+ can secure this property for up to 59% less, by purchasing a Lifetime Lease.

EPC RATING

CURRENT:	POTENTIAL:
E(44)	B(31)

20419812/20240912/SS/DC